

Orange Line



Geared scroll chucks - Orange Line

APPLICATION

Proven rotary chuck for use in areas requiring high clamping forces, high concentricity as well as reliable long-term repeatability. Cross tenon to ISO 3442 and ASA B 5.8.

TYPE

Geared scroll chucks in cast iron design. Special flat design with direct mounting.

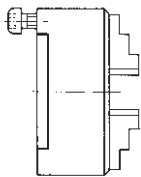
CUSTOMER BENEFITS

- ③ Good price/performance ratio
- ③ Special flat design with direct mounting
- ③ The jaws can be adjusted over the entire clamping range by turning the key. This allows workpieces with different clamping diameters to be quickly clamped
- ③ Jaws in chuck ground out for concentricity

TECHNICAL FEATURES

- With one set each of one-piece outward- and inward stepped jaws
- Vibration-damping body made of special cast iron
- Spiral ring die-forged as well as balanced and hardened

A09
DIN 6350, cylindrical centre mount, form A



Size	Cylindrical centre mount	Through-hole mm	3 jaw chuck with inside and outside jaw	4 jaw chuck with inside and outside jaw	Speed max. min ⁻¹	Torque Nm	Total clamping force kN
100	70	20	101781	102129	4500	60	27
125	95	32	101628	106074	4000	80	31
160	125	42	100300	100325	3600	110	47
200	160	55	100000	100465	3000	140	55
250	200	76	100200	100834	2500	150	63
315	260	103	101248	101567	2000	180	69

Jaws Orange Line

A09
Inside jaw BB DIN 6350, outward stepped jaw, hardened



Chuck Size	3-jaw set	4-jaw set	Jaw length	Jaw height	Jaw width
100	110156	110064	48	33,5	14
125	110157	110065	52	41,5	18
160	110159	110067	61	47,5	18
200	110160	110068	69	53,5	20
250	110161	110069	90	67,5	24
315	110162	110070	130	79,5	34

Additionally or later purchased, hardened jaws must be ground out in the chuck.
For jaws which are applied later, send in the chuck.

A09
Outside jaw DB DIN 6350, inward stepped jaw, hardened



Chuck Size	3-jaw set	4-jaw set	Jaw length	Jaw height	Jaw width
100	110166	110074	48	33,5	14
125	110167	110075	52	41,5	18
160	110169	110077	61	47,5	18
200	110170	110078	69	53,5	20
250	110171	110079	90	67,5	24
315	110016	110080	130	79,5	34

Additionally or later purchased, hardened jaws must be ground out in the chuck.
For jaws which are applied later, send in the chuck.

A09
Unstepped jaw BL DIN 6350, unstepped, soft, 16MnCr5



Chuck Size	3-jaw set	4-jaw set	Jaw length	Jaw height	Jaw width
100	107589	107599	48	33,5	14
125	107590	107600	52	41,5	18
160	107592	107602	61	47,5	18
200	107593	107603	69	53,5	20
250	107594	107604	90	67,5	24
315	107595	107605	130	79,5	34

A09
Base jaw GB DIN 6350, with fixing screw



Chuck Size	3-jaw set	4-jaw set	Jaw length	Jaw width
100	107500	107542	46	14
125	107501	107543	55	18
160	107503	107545	65	18
200	107504	107546	78	20
250	107505	107547	92	24
315	107506	107548	108	34

A09
Reversible top jaws UB DIN 6350, hardened



Chuck Size	3-jaw set	4-jaw set	Jaw length	Jaw height	Jaw width
100	108045	108053	47	29,5	22
125	108046	108054	56	37,5	26
160	107936	107938	66,7	41,5	28
200	107937	107939	79,5	42,5	30
250	108049	108057	95,3	52,5	36
315	108050	108058	109,5	57,5	42

Additionally or later purchased, hardened jaws must be ground out in the chuck.
For jaws which are applied later, send in the chuck.

Configure your individual clamping jaws online! www.web2product.biz

Jaws Orange Line

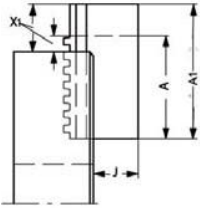
A09
Unstepped top jaw AB DIN 6350, soft, material 16MnCr5



Chuck Size	3-jaw set	4-jaw set	Jaw length	Jaw height	Jaw width
100	107633	107641	53	30	22,5
125	107634	107642	62	38	26,5
160	108581	108583	74	42	28,5
200	108582	108584	87	43	30,5
250	107637	107579	103	53	36,5
315	107638	107580	120	58	42,5

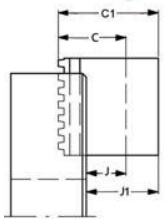
Jaws Orange Line

A09
Unstepped jaw BL, special length, soft, 16MnCr5, DIN 6350



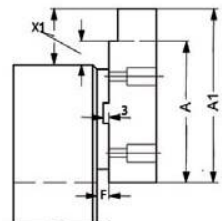
Chuck Size	3-jaw set	4-jaw set	A1	X1 max.	A mm	J mm	X max. mm
200	130031	137073	100	50	69	32,5	19
250	132658	137074	120	56	90	41	26
315	132184	129894	160	70	130	46	40
200	130033	137077	120	70	69	32,5	19
250	128880	130610	140	76	90	41	26
315	118908	137078	200	110	130	46	40
315	121367	133691	250	160	130	46	40

A09
Unstepped jaw BL, special height, soft, 16MnCr5, DIN 6350



Chuck Size	3-jaw set	4-jaw set	C1 mm	J1	C mm	J mm
200	125710	132972	80	58,5	54	32,5
250	122188	134796	100	73	68	41
315	132186	137091	110	76	80	46
200	125712	137095	120	98,5	54	32,5
250	122189	130630	130	103	68	41
315	137096	137097	140	106	80	46
200	125714	137101	150	128,5	54	32,5
250	137102	137103	150	123	68	41
315	137104	130340	160	126	80	46

A09
Top jaw AB, special length, soft, 16MnCr5, DIN 6350



Chuck Size	3-jaw set	4-jaw set	A1	X1 max.	F mm	A mm	X max. mm
200	110086	148139	100	43	6,8	87	30
250	112122	129289	130	63	8	103	36
315	110624	143764	160	76	5,5	120	36
200	112120	148657	120	63	6,8	87	30
250	125428	128700	150	83	8	103	36
315	112091	147754	200	116	5,5	120	36
250	104710	146013	180	113	8	103	36
315	112089	147860	250	166	5,5	120	36

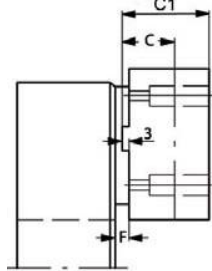
Jaws Orange Line

A09

Top jaw AB, special height, soft, 16MnCr5 DIN 6350



Chuck Size	3-jaw set	4-jaw set	C1 mm	C mm	F mm
200	132155	132181	60	43	6,8
250	119645	135867	70	53	8
315	110435	149975	80	58	5,5
200	128564	149976	80	43	6,8
250	128571	134999	100	53	8
315	110437	129691	110	58	5,5
250	128573	149978	150	53	8
315	128569	141671	150	58	5,5



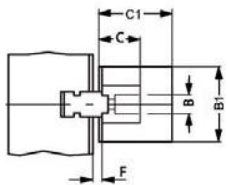
Jaws Orange Line

A09

Top jaw AB, special width and height, soft, 16MnCr5 DIN 6350



Chuck Size	3-jaw set	4-jaw set	B ₁ mm	C1 mm	B mm	C mm
200	105057	105061	40	70	30,5	43
250	137090	141338	50	80	36,5	53
315	143053	149979	60	90	42	58
200	133259	149982	50	80	30,5	43
250	133653	137526	60	90	36,5	53
315	143057	149983	80	110	42	58



C15

Mounting bolt for top jaws, bolt 1



Item no.	Size	Thread	Contents of delivery
249299	100	M6x20	piece
236949	125	M8x25	piece
334571	160	M8x30	piece
233025	250	M12x40	piece
233026	315	M12x45	piece

C15

Mounting bolt for top jaws, bolt 2



Item no.	Size	Thread	Contents of delivery
216528	100	M6x16	piece
233058	125/160/200	M8x20	piece
227692	250	M12x25	piece
233030	315	M12x30	piece

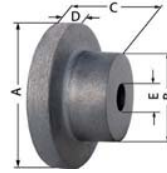
Configure your individual clamping jaws online! www.web2product.biz

Accessories Orange Line

Accessories Orange Line

A09 Base plates for lathe chucks with **cylindrical centre mount** DIN 6350


Item no.	Size
162793	160
162401	200
163036	250
133705	315

A09 Unfinished adapter plates for **cylindrical mount**
 The unfinished back plate must be machined and fitted on both machine and chuck side


Item no.	Chuck Size	Inch	A mm	B mm	C mm	D mm	E mm
017114	100	4	120	80	58	20	25
017115	125	5	135	80	58	20	25
017116	160	6 ¼	170	80	58	20	30
017117	200	8	210	92	66	22	40
017118	250	10	260	105	92	25	50

A09 Chip guard, piece


Item no.	Size	Contents of delivery
108501	100/110	piece
108502	125	piece
108503	140/160	piece
108504	200	piece
108505	250	piece
108506	315/350/400	piece

A09 Special grease F80 for lathe chucks
 for lubrication and conservation of chucking power


Item no.	Design	Contents
308555	Cartridge	0,5 kg
028975	Tin	1 kg

A09 Scroll


Item no.	Size
101754	100
112660	110
101721	125
105827	140
100303	160
100003	200
100203	250
101552	315

A09 Driving pinion


Item no.	Size	Square
101755	100	8
112662	110	8
101722	125	9
105828	140	9
100304	160	10
100005	200	11
100204	250	12
112267	270	12
101553	315	14

A09 Pinion holder screw


Item no.	Size
100305	160
100006	270
101554	315

A09 Standard key


Item no.	Size	Square	Length mm
107427	100/110	8	75
107428	125/140	9	80
107429	160	10	90
107430	200/230	11	100
107431	250/270	12	100
107432	315	14	110

A09 Safety key with ejector



Item no.	Size	Square	Length mm
154371	100/110	8	130
154372	125/140	9	130
154373	160	10	160
154374	200/230	11	160
154375	250/270	12	160
154376	315	14	200

A09 Elongated safety key with ejector


Item no.	Size	Square	Length mm
154683	125/140	9	170
154685	160	10	180
154687	200/230	11	200
154689	250/270	12	200
154695	315	14	250


Accessories Orange Line

A09 **Safety adapter with ejector**
for actuating the chuck with torque (defined torque introduction)




Item no.	Size	Square	Inch
178567	100/110	8	1/2
178568	125/140	9	1/2
178569	160	10	1/2
178570	200/230	11	1/2
178571	250/270	12	1/2
178572	315/350	14	1/2

A09 **Mounting screws**
with cylindrical centre rim




Item no.	Size	Thread	Contents of delivery
334571	100-140	M8x30	piece
249301	160-230	M10x35	piece
233025	250-270	M12x40	piece
220565	315-350	M16x50	piece

C15 **Mounting screws**
for lathe chucks with direct **short-taper**, for front mounting




Item no.	Size	Thread	Contents of delivery	Chuck Size	Taper size
233075	100	M10x90	piece	250	5
216549	110	M12x70	piece	250	6
302194	125	M16x70	piece	250	8
242954	140	M12x100	piece	315	6
358816	160	M16x85	piece	315	8
243665	200/230	M12x130	piece	350	6
236516	315	M16x110	piece	400	8

C15 **Set screw with nut DIN 55021**




Item no.	Thread	For taper	Quantity
107453	M10x30	4	3
107455	M10x35	5	4
107456	M12x40	6	4
107457	M16x45	8	4
107458	M20x55	11	6
127618	M24x65	15	6

A09 **Stud for Camlock ISO 702-2 (DIN 55029) and cylindrical studs**




Item no.	Thread	For taper	Quantity
178364	M10x1	3	3
178365	M10x1	4	3
178366	M12x1	5	6
178367	M16x1,5	6	6
178368	M20x1,5	8	6
178369	M22x1,5	11	6
178370	M24x1,5	15	6
178371	M27x2	20	6

A09 **Stud and locknut ISO 702-3 (DIN 55027)**



Item no.	Thread	Contents of delivery	For taper	Quantity
107447	M10x34	piece	3	3
107448	M10x39	piece	4	3
107449	M10x43	piece	5	4
107450	M12x50	piece	6	4
107451	M16x60	piece	8	4
107452	M20x75	piece	11	6
125650	M24x90	piece	15	6
130636	M24x100	piece	20	6

A09 **Stud for Camlock ASA B 5.9 (DIN 55029) and cylindrical studs**



Item no.	Thread	For taper	Quantity
107465	7/16-20x35	3	3
107466	7/16-20x37	4	3
107467	1/2-20x43	5	6
107468	5/8-18x49	6	6
107469	3/4-16x55,5	8	6
107470	7/8-14x67	11	6
127621	1-14x76	15	6
130637	1 1/2-12x89	20	6