

UGE - UGU



Cast iron independent chucks UGE-UGU

APPLICATION

Clamping chucks for lathes on which large, heavy or irregularly shaped workpieces are clamped.

TYPE

Independent four-jaw chuck in cast iron design. Jaws individually adjustable via threaded spindle (no central drive). Starting from size 400 with T-slots and set-up slots.

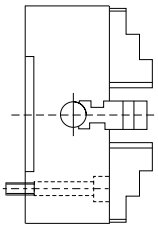
CUSTOMER BENEFITS

- ☺ Concentric rings for visual rough centering, fine centering using dial gauge

TECHNICAL FEATURES

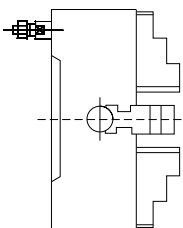
- Cast iron design incl. clamping wrench and fastening screws, as well as 1 set of reversible or base and top jaws

A26
Cylindrical centre mount



Size	With one-piece reversible jaws	With base jaws and top jaws	Through-hole mm	Speed max. min ⁻¹
160	1189704 ▲	-	45	2000
200	1189705 ▲	1189780 ▲	56	1800
250	1189706 ▲	1189781 ▲	65	1500
315	1189707 ▲	1189782 ▲	80	1200
400	1189708 ▲	1189783 ▲	100	800
500	1189709 ▲	1189784 ▲	125	500

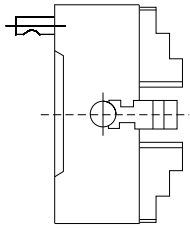
A26
ISO 702-3 (DIN 55027), DIN 55022, with studs and locknuts, optional DIN 55021 with set screw and nut



Size	Mount short taper	With one-piece reversible jaws	With reversible top jaws	Through-hole mm	Speed max. min ⁻¹
200	5	1189714 ▲	1189789 ▲	56	1800
200	6	1189715 ▲	1189790 ▲	56	1800
250	5	1189716 ▲	1189791 ▲	65	1500
250	6	1189717 ▲	1189792 ▲	65	1500
250	8	1189718 ▲	1189793 ▲	65	1500
315	5	1189719 ▲	1189794 ▲	80	1200
315	6	1189720 ▲	1189795 ▲	80	1200
315	8	1189721 ▲	1189796 ▲	80	1200
400	6	1189722 ▲	1189797 ▲	100	800
400	8	1189723 ▲	1189798 ▲	100	800
400	11	1189724 ▲	1189799 ▲	100	800
500	6	1189725 ▲	1189800 ▲	100	500
500	8	1189726 ▲	1189801 ▲	125	500
500	11	1189727 ▲	1189802 ▲	125	500

UGE - UGU

A26
ISO 702-2 (DIN 55029), ASA B 5.9, Type D, with studs for Camlock



Size	Mount short taper	with one-piece reversible jaws	with reversible top jaws	Through-hole mm	Speed max. min ⁻¹
200	4	1189733 ▲	1189812 ▲	56	1800
200	5	1189734 ▲	1189813 ▲	56	1800
200	6	1189735 ▲	1189943 ▲	56	1800
250	4	1189736 ▲	1189814 ▲	60	1500
250	5	1189737 ▲	1189815 ▲	65	1500
250	6	1189738 ▲	1189816 ▲	65	1500
250	8	1189739 ▲	1189817 ▲	65	1500
315	5	1189740 ▲	1189818 ▲	80	1200
315	6	1189741 ▲	1189819 ▲	80	1200
315	8	1189742 ▲	1189820 ▲	80	1200
400	6	1189743 ▲	1189821 ▲	100	800
400	8	1189744 ▲	1189822 ▲	100	800
400	11	1189745 ▲	1189823 ▲	100	800
500	8	1189746 ▲	1189824 ▲	125	500
500	11	1189747 ▲	1189825 ▲	125	500

Cast iron independent chucks UGE-UGU

Jaws UGE - UGU

A09
Reversible jaw EB, hardened



Item no.	Chuck Size	Contents of delivery	Jaw length	Jaw height	Jaw width
1189865 ▲	160	set	61,5	51	20
1189866 ▲	200	set	85	61,5	27
1189867 ▲	250	set	92	61,5	27
1189868 ▲	315	set	111	76,5	40
1189871 ▲	400	set	129	76,5	40
1189872 ▲	500	set	152,5	93,5	52

A09
Base jaw GB with mounting bolts



Item no.	Chuck Size	Contents of delivery	Jaw length	Jaw height	Jaw width
1189895 ▲	200	set	79	32	27
1189896 ▲	250	set	94	38	27
1189897 ▲	315	set	110	39	40
1189898 ▲	400	set	129	44	40
1189899 ▲	500	set	168	59	52

A09
Unstepped top jaw AB, soft



Item no.	Chuck Size	Contents of delivery	Jaw length	Jaw height	Jaw width
1189877 ▲	200	set	90	43,5	40
1189878 ▲	250	set	106	51,5	47
1189879 ▲	315	set	120	55	52
1189880 ▲	400	set	140	64,5	52
1189881 ▲	500	set	145	82	60

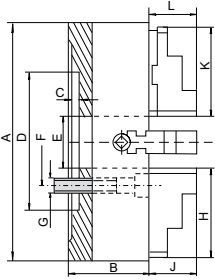
A09
Reversible top jaws UB, hardened



Item no.	Chuck Size	Contents of delivery	Jaw length	Jaw height	Jaw width
1189886 ▲	200	set	82	43,5	34
1189887 ▲	250	set	96,5	51,5	34
1189888 ▲	315	set	112,5	55	42
1189889 ▲	400	set	129	64,5	42
1189890 ▲	500	set	136	74,5	54

Chuck dimensions UGE - UGU

Cylindrical centre mount

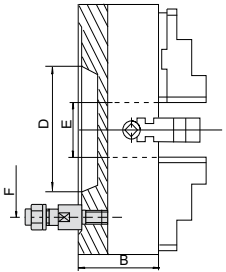


Size	160	200	250	315	400	500
A	160	200	250	315	400	500
B	65	75	85	95	105	120
C	5	6	7	7	10	12
D ^{H7}	65	75	150	175	200	270
E	45	56	65	80	100	125
F	95	95	104,8	133,4	171,4	235
G	4xM10	4xM10	4xM12	4xM16	4xM16	4xM20
H	61,5	85	96,5	111	129	152,5
J	31,5	35	40,3	49,8	49,8	59,8
L	-	46,4	60,4	60,9	72,3	90,3
K	-	82	96,5	112,5	129	136
approx. kg	7,5	10	25	39	61	105

Chuck dimensions UGE - UGU

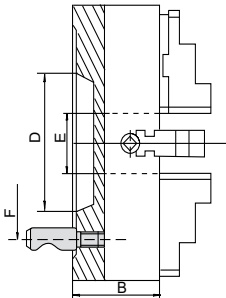
Short taper mount

DIN 55027 with studs and locknuts



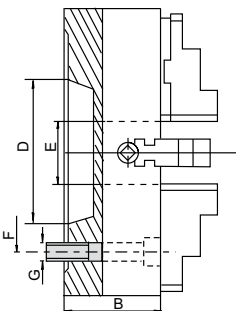
Size	200			250				315			
Taper size	4	5	6	4	5	6	8	5	6	8	
B	75	75	75	85	85	85	85	95	95	95	
D	63,5	82,5	106,3	63,5	82,5	106,3	139,7	82,5	106,3	139,7	
E	56	56	56	60	65	65	65	80	80	80	
F	85 ¹⁾	82,6	104,8	133,4	82,6	104,8	133,4	171,4	104,8	133,4	171,4
Mounting holes	DIN	3	4	4	-	4	4	4	4	4	4
	Camlock	3	6	6	3	6	6	6	6	6	6
approx. kg	10	10	10	27,5	27,5	27,5	27,5	39,5	39,5	39,5	

DIN 55029 with studs for camlock



Size	400			500		
Taper size	6	8	11	6	8	11
B	105	105	105	120	120	120
D	106,3	139,7	196,8	106,3	139,7	196,8
E	100	100	100	100	125	125
F	133,4	171,4	235	133,4	171,4	235
Mounting holes	DIN	4	4	6	4	6
	Camlock	6	6	6	6	6
approx. kg	60	60	60	95,5	95,5	95,5

DIN 55026 mounting from front

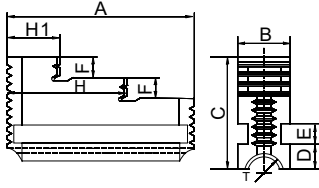


Size	200		250			315			400		
Taper size	5	6	5	6	8	5	6	8	6	8	11
B	75	75	85	85	85	95	95	95	105	105	105
D	82,5	106,3	82,5	106,3	139,7	82,5	106,3	139,7	106,3	139,7	196,8
E	50	50	65	65	65	80	80	80	100	100	100
F	104,8	133,4	104,8	133,4	171,4	104,8	133,4	171,4	133,4	171,4	235
G	4xM10	4xM12	8xM10	4xM12	4xM16	4xM10	8xM12	4xM16	8xM12	4xM16	4xM20
approx. kg	17	17	25,5	25,5	25,5	40	40	40	65	65	65

Size	500		
Taper size	6	8	11
B	120	120	120
D	106,3	139,7	196,8
E	100	125	125
F	133,4	171,4	235
G	4xM12	8xM16	8xM20
approx. kg	114	114	114

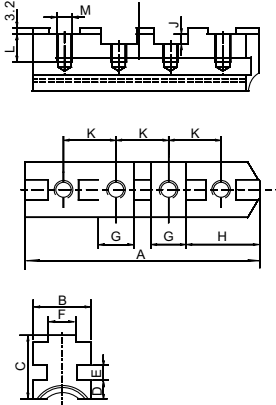
Jaw dimensions UGE - UGU

Reversible one-piece jaw EB



Size	160	200	250	315	400	500
A	61,5	85	92	111	129	152,5
B	20	27	27	40	40	52
C	51	61,5	61,	76,5	76,5	93,5
D	9	11,5	11,5	9,7	9,7	11,7
E	10	10	10	12	12	15
F	10	12	12	18	18	22
H1	20	30,5	30,5	27	32,5	35
H	41	58	65,5	67	78,5	93
Thread T	22x4	24x4	24x4	Tr32x6	Tr32x6	Tr36x6

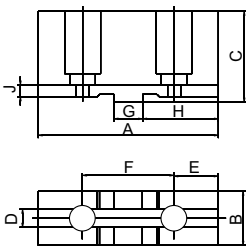
Base jaw GB



Size	200	250	315	400	500
A	79	94	110	129	168
B	27	27	40	40	52
C	32	38	39	44	59
D	11,5	11,5	9,7	9,7	11,7
E	10	10	12	12	15
F _{-0,03}	7,94	12,7	12,7	12,7	12,7
G _{+0,01}	12,69	19,04	19,04	19,04	19,04
H	33,2	37,5	45,4	54,9	55,5
J	4	4	4	7,2	7,2
K	22,25	27	31,75	38,1	38,1
L	14	20	17,5	22	33,5
M	3/8-16	1/2-13	1/2-13	5/8-11	3/4-10
Thread T	24x4	24x4	Tr32x6	Tr32x6	Tr36x6

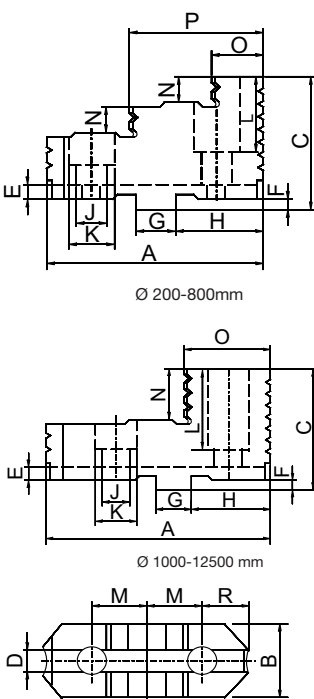
Chuck dimensions UGE - UGU

Unstepped soft top jaw AB

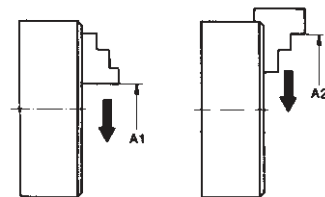


Size	200	250	315	400	500
A	90	106	120	140	145
B	40	47	52	52	60
C	43,5	51,5	55	64,5	82
D	7,95	12,71	12,71	12,71	12,71
E	24	27,5	30,7	34,4	34,4
F	44,5	54	63,5	76,2	76,2
G	12,69	19,04	19,04	19,04	19,04
H	40	45	53	63	63
J	4	4	4	4	4

Reversible top jaw UB



Size	200	250	315	400	500
A	82	96,5	112,5	129	136
B	34	34	42	42	54
C	43,5	51,5	55	64,5	74,5
D	7,95	12,71	12,71	12,71	12,71
E	4	4	4	4	4
F _{-0,03}	3,2	3,2	3,2	6,3	6,3
G _{+0,01}	12,69	19,04	19,04	19,04	19,04
H	35,2	40	47,9	57,4	58
J	11	14	14	18	22
K	18	20	20	26	33
L	21,5	26,5	27,5	32	39,5
M	3/8-16	1/2-13	1/2-13	5/8-11	3/4-10
N	9,5	12	13	13,5	18
O	22	25	27	26,5	37,5
P	53	62	70,5	79	87
R	19,3	22,5	25,7	28,8	29,4



Chucking capacities of jaw steps (standard values)

Size mm	160	200	250	315	400	500
A1 min.	8	10	10	15	20	45
A2 max.	160	200	250	315	400	500
max. swing. dia.	185	235	296	369	465	570