



Lever scroll chucks
KRF

APPLICATION

Three- and four-jaw chuck for positioning and conveying workpieces, e.g. on measuring machines.

TYPE

Face spiral chuck in cast iron version.

CUSTOMER BENEFITS

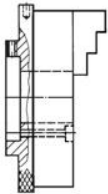
- ⊕ Easy clamping of the workpiece by turning the clamping ring
- ⊕ Sizes 125 - 200: 4 setscrews for fine adjustment
- ⊕ Cast iron body
- ⊕ Jaws in chuck ground out for concentricity

TECHNICAL FEATURES

- 6 jaw chuck for grinding twist drills on request available

A09

Lever scroll chucks KRF, cylindrical centre mount



Size	Cylindrical centre mount	Through-hole mm	3 jaw chuck with inside and outside jaw	4 jaw chuck with inside and outside jaw	Torque Nm	Total clamping force kN
70	48	16	148793 ¹⁾	148794	12	2,5
110	75	26	148757	148772	26	3,2
125	70	35	150757	150758	36	3,5
160	78,5	52	150759	150760	50	4
200	115	64	150761	150762	60	4,5

¹⁾ jaws reversible
 Sizes 125 - 200: 4 setscrews for fine adjustment
 Further sizes and mountings available on request

KRF - on base plate



APPLICATION

Three-jaw chuck with base plate for positioning and conveying workpieces, e.g. on measuring machines.

TYPE

Face spiral chuck in cast iron version.

CUSTOMER BENEFITS

- ⊕ Easy clamping of the workpiece by turning the clamping ring
- ⊕ Sizes 125 - 200: 4 setscrews for fine adjustment
- ⊕ Cast iron body

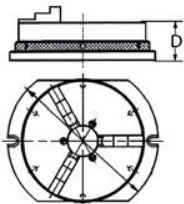
TECHNICAL FEATURES

- Mounted in the chuck with one set of jaws stepped outward (BB)
- One set of jaws stepped inward (DB)
- Size 70 with reversible jaws
- Fastening screws

Lever scroll chucks
KRF

A09

Lever scroll chucks with base plate 3-jaw-chuck cast iron body



Item no.	Size	Through-hole mm	D mm	Torque Nm	Total clamping force kN
150595 ¹⁾	70	16	46,4	12	2,5
150596	110	26	50	26	3,2
150597	125	35	59	36	3,5
150598	160	52	59	50	4
150599	200	64	69	60	4,5

¹⁾ jaws reversible
Further sizes and mountings available on request

Jaws KRF

A09
Inside jaw BB DIN 6350, outward stepped jaw, hardened



Chuck Size	3-jaw set	4-jaw set	Jaw length	Jaw height	Jaw width
70	110154 ¹⁾ ▲	149305 ¹⁾	32	23	10
100	110156	110064	48	33,5	14
125	110157	110065	52	41,5	18
160	110159	110067	61	47,5	18
200	110160	110068	69	53,5	20

¹⁾ Reversible, for use as turning or inside jaws
Additionally or later purchased, hardened jaws must be ground out in the chuck.
For jaws which are applied later, send in the chuck.

A09
Outside jaw DB DIN 6350, inward stepped jaw, hardened



Chuck Size	3-jaw set	4-jaw set	Jaw length	Jaw height	Jaw width
100	110166	110074	48	33,5	14
125	110167	110075	52	41,5	18
160	110169	110077	61	47,5	18
200	110170	110078	69	53,5	20

Additionally or later purchased, hardened jaws must be ground out in the chuck.
For jaws which are applied later, send in the chuck.

A09
Unstepped jaw BL DIN 6350, unstepped, soft, 16MnCr5

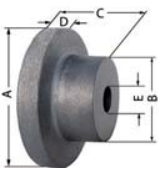


Chuck Size	3-jaw set	4-jaw set	Jaw length	Jaw height	Jaw width
70	109114 ¹⁾	149304 ¹⁾	32	23	10
100	107589	107599	48	33,5	14
125	107590	107600	52	41,5	18
160	107592	107602	61	47,5	18
200	107593	107603	69	53,5	20

¹⁾ Reversible

Accessories KRF

A09
Unfinished adapter plates for cylindrical mount
The unfinished back plate must be machined and fitted on both machine and chuck side



Item no.	Chuck Size	Inch	A mm	B mm	C mm	D mm	E mm
017114	100	4	120	80	58	20	25
017115	125	5	135	80	58	20	25
017116	160	6 ¼	170	80	58	20	30
017117	200	8	210	92	66	22	40

A09
Chip guard, piece



Item no.	Size	Contents of delivery
108501	100/110	piece
108502	125	piece
108503	140/160	piece
108504	200	piece

C15
Special grease F80 for lathe chucks
for lubrication and conservation of chucking power



Item no.	Design	Contents
308555	Cartridge	0,5 kg
028975	Tin	1 kg

Configure your individual clamping jaws online! www.web2product.biz