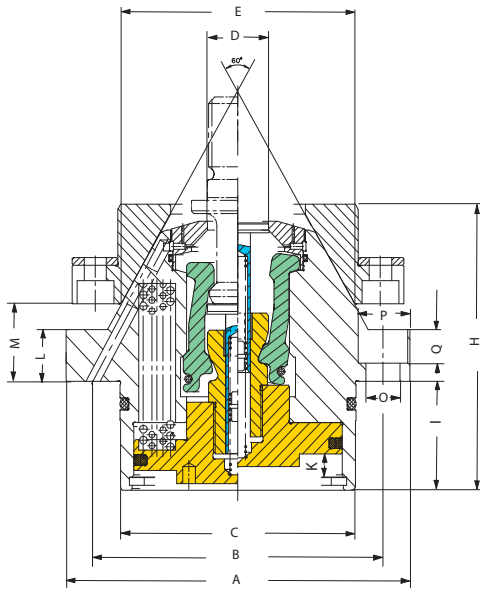


Spring operated clamping head



APPLICATION

On machine tables, when secure clamping of the pallet must be guaranteed, even without hydraulic pressure applied.

TYPE

Spring-actuated clamping - hydraulic release.

CUSTOMER BENEFITS

- ⊕ High system rigidity due to stable design due to the connecting ribs between the individual spring packages
- ⊕ Hydraulic pressure is only required for release
- ⊕ Pull-out safety device without additional elements
- ⊕ Spring-actuated locking cover

TECHNICAL FEATURES

- Compact design
- More powerful effect of the collet chuck
- Air sensing possible

C 15

Spring operated clamping head For clamping pallets

Item no.	1154381	1154382	1256149	1262302
Size A	100	110	125	140
Contents of delivery	set	set	set	set
B mm	86	92	105	118
C mm	70	76	85	96
D mm	19	19	20	25
E mm	70	75	85	95
H mm	90	96	93	104
I mm	43	49	43	42
K mm	-	9,5	9,5	9,5
L mm	11	15	15	20
M mm	22	23	25	30
O mm	6,6	9	9	14
P mm	14	15	15	20
Q mm	7	8,5	8,5	13
Piston area: releasing cm ²	28,3	33,18	44,1	56,7
Min. release pressure bar	-	50	40	40
Pull-in-force N	15000	20000	20000	40000
Blast-air pressure bar	10	10	10	10
Weight kg	2,5	3	4	6

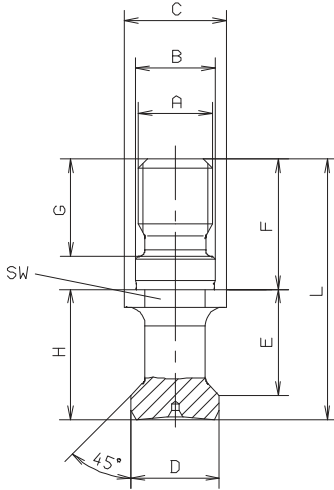
Sets can be aligned in height on request

Accessories spring operated clamping head

A 34
Draw-in bolts for clamping heads



Item no.	For clamping head size	Size A	Contents of delivery	B mm	C mm	D mm	E mm	F mm	G mm	H mm	L mm	Key-width SW
1243664	100	M18x1,5	piece	19	25,4	15,5	23,7	21	19	28,2	49	22
1243665	110	M18x1,5	piece	19	25,4	19	25,1	23	20	30,3	53	22
850094	125	M20	piece	21	34	19	29	30	23	35	65	30
1116394	140	M24	piece	25	38	23	34,7	40	32	40	80	30

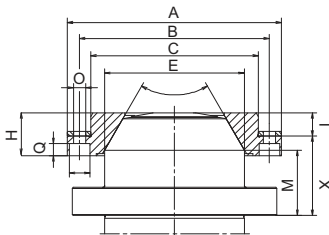


C 15
Mounting flange for clamping heads



Item no.	For clamping head size	Size A	Contents of delivery	B mm	C mm	C	E mm	H mm	I mm	M mm	O mm	P mm	Q mm	X mm
1176444	100	105	set	90	80	6x60°	64	20	9	27,2	6,6	11	6,8	33
1176382	110	110	set	96	85	6x60°	68	20	7,5	29,06	6,6	11	6,8	35,5
1296089	125	125	set	106	88	4x90°	85	32,5	18,5	25	9	15	9	39
1296090	140	135	set	116	98	-	95	38,5	23,5	30	9	15	9	45

Further details on request



Hydraulic clamping head



APPLICATION

The hydraulic operated clamping device may be suitable for all existing sorts of pallet clampings.

TYPE

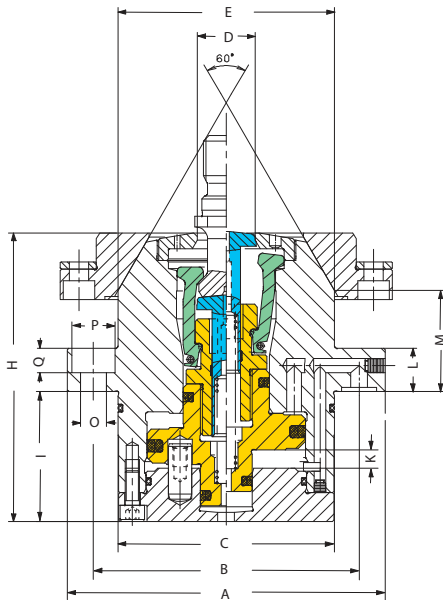
Clamping and release are hydraulic.

CUSTOMER BENEFITS

- ③ High system rigidity due to stable design due to the connecting ribs between the individual spring packages
- ③ Simple, reliable design
- ③ Spring-actuated locking cover

TECHNICAL FEATURES

- Compact design
- More powerful effect of the collet chuck
- Air sensing possible



C 15

Hydraulic clamping head for clamping pallets

Item no.	486816	850092	869832	489556
Size A	110	125	140	148
Contents of delivery	piece	piece	piece	piece
B mm	92	105	118	125
C mm	75	85	96	106
D mm	20	20	29,5	29,5
E mm	75	85	98	100
H mm	100	106,5	121,5	131
I mm	45	55	58	63
K mm	6,3	6,3	6,8	6,5
L mm	15	15	20	22
M mm	35	25	30	39,9
O mm	9	9	11	11
P mm	15	15	18	18
Q mm	8,5	8,5	11	11
Piston area: clamping cm ²	16,7	24	37	28,9
Piston area: releasing cm ²	23,7	31,2	44,2	33,3
Max. operating pressure bar	130	85	80	130
Pull-in-force N	21700	20400	29600	37500
Blast-air pressure bar	10	10	10	10
Weight kg	4	6	8	9

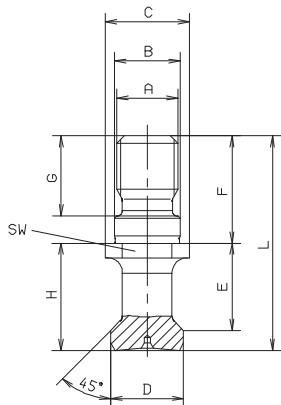
Sets can be aligned in height on request

Accessories hydraulic clamping head

A 34 Draw-in bolts for clamping heads



Item no.	For clamping head size	Size A	Contents of delivery	B mm	C mm	D mm	E mm	F mm	G mm	H mm	L mm	Key-width SW
586393	110	M16	piece	17	21,9	18,95	22,75	28	21	28	56	19
850094	125	M20	piece	21	34	19	29	30	23	35	65	30
869859	140	M24	piece	25	41,5	27,5	34	40	33,5	40	80	36
586394	148	M24	piece	25	41,5	27,5	34	40	33,5	40	80	36



C 15 Mounting flange for clamping heads



Item no.	For clamping head size	Size A	Contents of delivery	B mm	Partition	C mm	E mm	H mm	I mm	M mm	O mm	P mm	Q mm	X mm
1128288 ▲	110	115	piece	102	90	75	23	4x90°	12,5	35	6,6	11	6,3	42,5
497213 ▲	125	125	piece	106	4x90°	88	85	32,5	18,5	25	9	15	9	39
497214 ▲	140	135	piece	116	6x60°	98	98	38,5	23,5	30	9	15	9	45
489557 ▲	148	160	piece	140	6x60°	120	100	38	23,5	39,9	9	15	9	50,5

Further details on request

