

# RZP-64



## APPLICATION

Universal gripping of round and cylindrical workpieces with three centrally arranged gripper fingers for handling with robots or portals.

## TYPE

Available from sizes 64 to 300, each in two stroke variants. Optionally with gripping force safety device and/or dirt cover.

Fastening of the gripper fingers via centering sleeves (included in the scope of delivery).

## CUSTOMER BENEFITS

- ⊕ High gripping force with low dead weight and compact design
- ⊕ High torque support for using long gripper fingers thanks to elongated jaw guide
- ⊕ Maximum flexibility thanks to versatile connection and fastening options
- ⊕ Long service life and high reliability thanks to specially ground base jaws in proven T-slot guide

## TECHNICAL FEATURES

- Centrally clamping in compact design made of high-strength, hard-coated aluminum alloy
- All functional parts made of hardened steel for maximum service life
- Wedge hook principle with pneumatic actuation
- Optional inductive and magnetic position sensors
- Optionally available with FKM seals for higher temperatures up to 150°C (on request)
- Integrated purge air connection to prevent contamination

C40

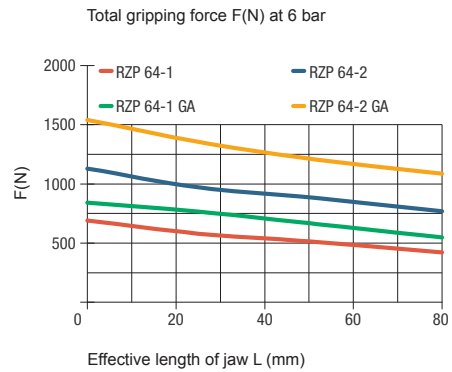
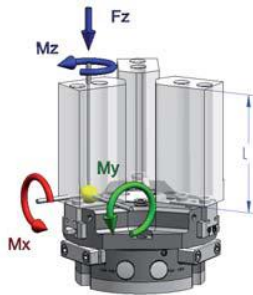
RZP-64 - 3-jaw centric gripper air operated

Item no.	170050	170051 ▲	170052	170053 ▲	170054	170055 ▲
Design	RZP-64/3-1	RZP-64/3-2	RZP-64/3-1 GA	RZP-64/3-2 GA	RZP-64/3-1 GI	RZP-64/3-2 GI
Gripping force at 6 bar N	650	1200	850	1600	900	1700
Stroke per jaw mm	6	3	6	3	6	3
Gripping force maintained N	-	-	200	400	200	400
Recommended workpiece weight kg	3,2	6	3,2	6	3,2	6
Weight kg	0,45	0,45	0,55	0,55	0,55	0,55
Height mm	43,3	43,3	56,8	56,8	56,8	56,8
Ø mm	76	76	76	76	76	76
Mx Nm	40	40	40	40	40	40
My Nm	60	60	60	60	60	60
Mz Nm	40	40	40	40	40	40
Fz N	1100	1100	1100	1100	1100	1100
Operating pressure min./max. without GA/GI bar	2-8	2-8	-	-	-	-
Operating pressure min./max. with GA/GI bar	-	-	4-7	4-7	4-7	4-7
Clamping time s	0,03	0,03	0,02	0,02	0,04	0,04
Opening time s	0,03	0,03	0,04	0,04	0,02	0,02
Air consumption per cycle cm <sup>3</sup>	25	25	25	25	25	25
Max. allowable length of jaw mm	90	85	85	80	85	80

# RZP-64

Max. load on gripper and jaw

Clamping force diagram exterior gripping



3 x Borehole for resilient pressure piece

RZP 64/3-1 MAX. 40,5; MIN. 34,5  
RZP 64/3-2 MAX. 40,5; MIN. 37,5

Tubeless direct connection

C-nut for magnetic sensors

Type GA/GI with gripping force safety device

Accessories: Resilient pressure piece

Accessories: Protective cover

Centric gripper RZP

# RZP-80



## APPLICATION

Universal gripping of round and cylindrical workpieces with three centrally arranged gripper fingers for handling with robots or portals.

## TYPE

Available from sizes 64 to 300, each in two stroke variants. Optionally with gripping force safety device and/or dirt cover. Fastening of the gripper fingers via centering sleeves (included in the scope of delivery).

## CUSTOMER BENEFITS

- ⊕ High gripping force with low dead weight and compact design
- ⊕ High torque support for using long gripper fingers thanks to elongated jaw guide
- ⊕ Maximum flexibility thanks to versatile connection and fastening options
- ⊕ Long service life and high reliability thanks to specially ground base jaws in proven T-slot guide

## TECHNICAL FEATURES

- Centrally clamping in compact design made of high-strength, hard-coated aluminum alloy
- All functional parts made of hardened steel for maximum service life
- Wedge hook principle with pneumatic actuation
- Optional inductive and magnetic position sensors
- Optionally available with FKM seals for higher temperatures up to 150°C (on request)
- Integrated purge air connection to prevent contamination

C40

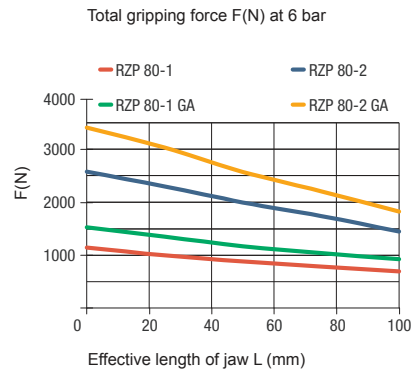
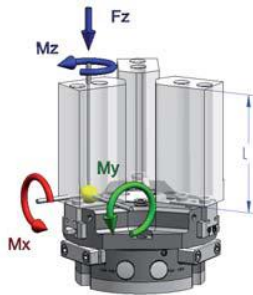
RZP-80 - 3-jaw centric gripper air operated

Item no.	170056	170057 ▲	170058	170059 ▲	170060	170061 ▲
Design	RZP-80/3-1	RZP-80/3-2	RZP-80/3-1 GA	RZP-80/3-2 GA	RZP-80/3-1 GI	RZP-80/3-2 GI
Gripping force at 6 bar N	1200	2400	1550	3100	1700	3250
Stroke per jaw mm	8	4	8	4	8	4
Gripping force maintained N	-	-	350	700	350	700
Recommended workpiece weight kg	6	12	6	12	6	12
Weight kg	0,8	0,8	1	1	1	1
Height mm	49,3	49,3	64,3	64,3	64,3	64,3
Ø mm	96	96	96	96	96	96
Mx Nm	60	60	60	60	60	60
My Nm	95	95	95	95	95	95
Mz Nm	55	55	55	55	55	55
Fz N	1500	1500	1500	1500	1500	1500
Operating pressure min./max. without GA/GI bar	2-8	2-8	-	-	-	-
Operating pressure min./max. with GA/GI bar	-	-	4-7	4-7	4-7	4-7
Clamping time s	0,05	0,05	0,03	0,03	0,06	0,06
Opening time s	0,05	0,05	0,05	0,05	0,04	0,04
Air consumption per cycle cm <sup>3</sup>	60	60	60	60	60	60
Max. allowable length of jaw mm	110	105	100	100	105	100

# RZP-80

Max. load on gripper and jaw

Clamping force diagram exterior gripping



3 x Borehole for resilient pressure piece

Ø 9H8

19

11.3

RZP 80/3-1 MAX. 51; MIN. 43  
RZP 80/3-2 MAX. 51; MIN. 47

RZP 80/3-1: 28  
RZP 80/3-2: 32

32.3

26

45.5

Tubeless direct connection

Adapter

Gripper

Ø7

Ø4

M4

1,1

O-ring Ø4x1,5

M5/5 deep for sealing air connection

(60,6)

14

3x 120°

11

M3

30°

17,5

9

40,5

(35)

Ø 44

M5/6 deep for air connection (2x)

15°

15°

49,3

29

17

10

2,5

Ø 8 h6 (6x)

16 ±0,02

RZP 80/3-1 MAX. 30; MIN. 22  
RZP 80/3-2 MAX. 26; MIN. 22

Ø 96

Ø 80

Ø 70

Ø 6,6 (2x)

Ø 5 H7 (2x)

M5 (6x)

M6 (3x)

30,8

Ø 6,4

Ø 11

9,2

48,3

C-nut for magnetic sensors

70 ±0,02

Ø 8 Sensor holder (3x)

39,5

32

M4 /5 deep for air connection Close

9

M4 /5 deep for air connection Open

9

Type GA/GI with gripping force safety device

41

63,3

64,3

Ø 80

Accessories: Resilient pressure piece

RZP-80/3-1/2: 57,8  
RZP-80/3-1/2 GA/GI: 72,8

4

Stroke 4,5

Elasticity MIN. 19N  
MAX. 29N

Ø 44

40

12

3x 120°

Accessories: Protective cover

RZP-80/3-1/2: 54,8  
RZP-80/3-1/2 GA/GI: 69,8

2,5

4

44

24

14

59,5

MAX. 65

RZP 80/3-1 MAX. 30; MIN. 22  
RZP 80/3-2 MAX. 26; MIN. 22

# RZP-100



## APPLICATION

Universal gripping of round and cylindrical workpieces with three centrally arranged gripper fingers for handling with robots or portals.

## TYPE

Available from sizes 64 to 300, each in two stroke variants. Optionally with gripping force safety device and/or dirt cover.

Fastening of the gripper fingers via centering sleeves (included in the scope of delivery).

## CUSTOMER BENEFITS

- ⊕ High gripping force with low dead weight and compact design
- ⊕ High torque support for using long gripper fingers thanks to elongated jaw guide
- ⊕ Maximum flexibility thanks to versatile connection and fastening options
- ⊕ Long service life and high reliability thanks to specially ground base jaws in proven T-slot guide

## TECHNICAL FEATURES

- Centrally clamping in compact design made of high-strength, hard-coated aluminum alloy
- All functional parts made of hardened steel for maximum service life
- Wedge hook principle with pneumatic actuation
- Optional inductive and magnetic position sensors
- Optionally available with FKM seals for higher temperatures up to 150°C (on request)
- Integrated purge air connection to prevent contamination

C40

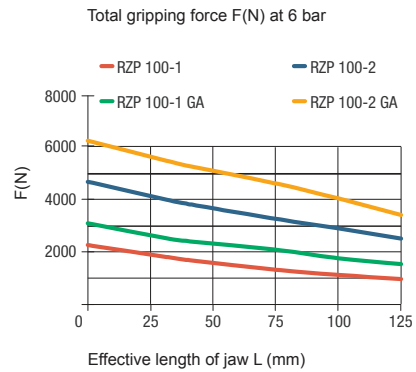
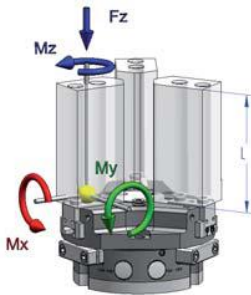
RZP-100 - 3-jaw centric gripper air operated

Item no.	170062	170063 ▲	170064	170065 ▲	170066	170067 ▲
Design	RZP-100/3-1	RZP-100/3-2	RZP-100/3-1 GA	RZP-100/3-2 GA	RZP-100/3-1 GI	RZP-100/3-2 GI
Gripping force at 6 bar N	2000	4000	2650	5300	2800	5620
Stroke per jaw mm	10	5	10	5	10	5
Gripping force maintained N	-	-	650	1300	650	1300
Recommended workpiece weight kg	10	20	10	20	10	20
Weight kg	1,4	1,4	2	2	2	2
Height mm	59,3	59,3	79,3	79,3	79,3	79,3
Ø mm	120	120	120	120	120	120
Mx Nm	80	80	80	80	80	80
My Nm	115	115	115	115	115	115
Mz Nm	70	70	70	70	70	70
Fz N	2000	2000	2000	2000	2000	2000
Operating pressure min./max. without GA/GI bar	2-8	2-8	-	-	-	-
Operating pressure min./max. with GA/GI bar	-	-	4-7	4-7	4-7	4-7
Clamping time s	0,1	0,1	0,1	0,1	0,2	0,2
Opening time s	0,1	0,1	0,2	0,2	0,1	0,1
Air consumption per cycle cm <sup>3</sup>	120	120	120	120	120	120
Max. allowable length of jaw mm	145	135	135	125	135	125

# RZP-100

Max. load on gripper and jaw

Clamping force diagram exterior gripping



3 x Borehole for resilient pressure piece

38  
29.3  
56.5

RZP 100/3-1 MAX. 63,5; MIN. 53,5  
RZP 100/3-2 MAX. 63,5; MIN. 58,5  
RZP 100/3-1: 35  
RZP 100/3-2: 37,5

Tubeless direct connection  
Adapter  
Gripper  
O-ring Ø4x1,5

C-nut for magnetic sensors  
Ø 8 Sensor holder (3x)  
M5 /5 deep for air connection Close  
M5 /5 deep for air connection Open

M5/5 deep for sealing air connection

M5/5 deep for air connection

**Type GA/GI with gripping force safety device**

49.3  
78.3  
79.3  
Ø100

**Accessories: Resilient pressure piece**

RZP-100/3-1/2: 68.8  
RZP-100/3-1/2 GA/GI: 88.8  
Stroke 5  
Elasticity MIN. 45N  
MAX. 67N

Ø58  
50  
12  
3x120°

**Accessories: Protective cover**

RZP-100/3-1/2: 65.8  
RZP-100/3-1/2 GA/GI: 85.8  
RZP-100/3-1 max. 37.5; min. 27.5  
RZP-100/3-2 max. 32.5; min. 27.5

3.5  
4  
51  
28  
18  
74.4  
MAX. 80

# RZP-125



## APPLICATION

Universal gripping of round and cylindrical workpieces with three centrally arranged gripper fingers for handling with robots or portals.

## TYPE

Available from sizes 64 to 300, each in two stroke variants. Optionally with gripping force safety device and/or dirt cover.

Fastening of the gripper fingers via centering sleeves (included in the scope of delivery).

## CUSTOMER BENEFITS

- ⊕ High gripping force with low dead weight and compact design
- ⊕ High torque support for using long gripper fingers thanks to elongated jaw guide
- ⊕ Maximum flexibility thanks to versatile connection and fastening options
- ⊕ Long service life and high reliability thanks to specially ground base jaws in proven T-slot guide

## TECHNICAL FEATURES

- Centrally clamping in compact design made of high-strength, hard-coated aluminum alloy
- All functional parts made of hardened steel for maximum service life
- Wedge hook principle with pneumatic actuation
- Optional inductive and magnetic position sensors
- Optionally available with FKM seals for higher temperatures up to 150°C (on request)
- Integrated purge air connection to prevent contamination

C40

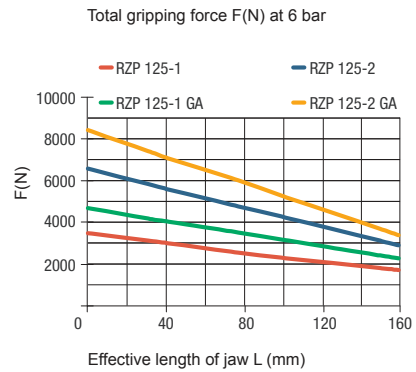
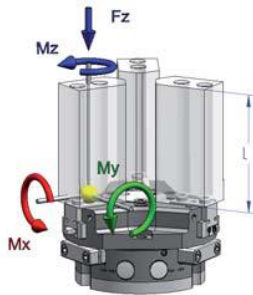
RZP-125 - 3-jaw centric gripper air operated

Item no.	170068	170069 ▲	170070	170071 ▲	170072	170073 ▲
Design	RZP-125/3-1	RZP-125/3-2	RZP-125/3-1 GA	RZP-125/3-2 GA	RZP-125/3-1 GI	RZP-125/3-2 GI
Gripping force at 6 bar N	3200	6000	4200	7800	4400	8000
Stroke per jaw mm	13	6	13	6	13	6
Gripping force maintained N	-	-	1000	1800	1000	1800
Recommended workpiece weight kg	16	30	16	30	16	30
Weight kg	2,4	2,4	3,2	3,2	3,2	3,2
Height mm	67	67	91,5	91,5	91,5	91,5
Ø mm	150	150	150	150	150	150
Mx Nm	120	120	120	120	120	120
My Nm	145	145	145	145	145	145
Mz Nm	100	100	100	100	100	100
Fz N	2800	2800	2800	2800	2800	2800
Operating pressure min./max. without GA/GI bar	2-8	2-8	-	-	-	-
Operating pressure min./max. with GA/GI bar	-	-	4-7	4-7	4-7	4-7
Clamping time s	0,2	0,2	0,17	0,17	0,35	0,35
Opening time s	0,2	0,2	0,35	0,35	0,17	0,17
Air consumption per cycle cm <sup>3</sup>	230	230	230	230	230	230
Max. allowable length of jaw mm	180	170	170	160	170	160

# RZP-125

Max. load on gripper and jaw

Clamping force diagram exterior gripping



3 x Borehole for resilient pressure piece  
 $\text{Ø} 16 \text{ H8}$   
 $\text{Ø} 14 \text{ H8}$

RZP 125/3-1: 42  
 RZP 125/3-2: 50

RZP 125/3-1 MAX. 79,5; MIN. 66,5  
 RZP 125/3-2 MAX. 79,5; MIN. 73,5

Tubeless direct connection

Adapter Gripper

O-ring  $\text{Ø} 4 \times 1,5$

M5/5 deep for sealing air connection

3x120°

3x120°

3x120°

61

52.7

112±0.02

Ø8 Sensor holder (3x)

C-nut for magnetic sensors

M5/5 deep for air connection Close

M5/5 deep for air connection Open

RZP 125/3-1 MAX. 48; MIN. 35  
 RZP 125/3-2 MAX. 41; MIN. 35

M5/5 deep for sealing air connection

3x120°

3x120°

3x120°

61

52.7

112±0.02

Ø8 Sensor holder (3x)

C-nut for magnetic sensors

M5/5 deep for air connection Close

M5/5 deep for air connection Open

RZP 125/3-1 MAX. 48; MIN. 35  
 RZP 125/3-2 MAX. 41; MIN. 35

**Type GA/GI with gripping force safety device**

**Accessories: Resilient pressure piece**

RZP-125/3-1/2: 77.5  
 RZP-125/3-1/2 GA/GI: 102

Stroke 6

Elasticity MIN. 120N  
 MAX. 150N

**Accessories: Protective cover**

RZP-125/3-1/2: 73.5  
 RZP-125/3-1/2 GA/GI: 98

RZP 125/3-1 MAX. 48; MIN. 35  
 RZP 125/3-2 MAX. 41; MIN. 35



# RZP-160



## APPLICATION

Universal gripping of round and cylindrical workpieces with three centrally arranged gripper fingers for handling with robots or portals.

## TYPE

Available from sizes 64 to 300, each in two stroke variants. Optionally with gripping force safety device and/or dirt cover. Fastening of the gripper fingers via centering sleeves (included in the scope of delivery).

## CUSTOMER BENEFITS

- ⊕ High gripping force with low dead weight and compact design
- ⊕ High torque support for using long gripper fingers thanks to elongated jaw guide
- ⊕ Maximum flexibility thanks to versatile connection and fastening options
- ⊕ Long service life and high reliability thanks to specially ground base jaws in proven T-slot guide

## TECHNICAL FEATURES

- Centrally clamping in compact design made of high-strength, hard-coated aluminum alloy
- All functional parts made of hardened steel for maximum service life
- Wedge hook principle with pneumatic actuation
- Optional inductive and magnetic position sensors
- Optionally available with FKM seals for higher temperatures up to 150°C (on request)
- Integrated purge air connection to prevent contamination

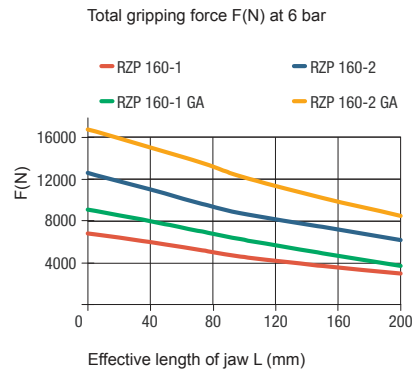
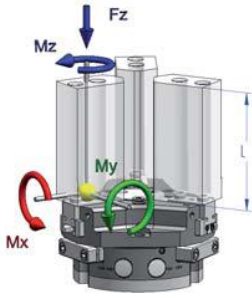
C40  
RZP-160 - 3-jaw centric gripper air operated

Item no.	170074	170075 ▲	170076	170077 ▲	170078	170079 ▲
Design	RZP-160/3-1	RZP-160/3-2	RZP-160/3-1 GA	RZP-160/3-2 GA	RZP-160/3-1 GI	RZP-160/3-2 GI
Gripping force at 6 bar N	6000	11000	8000	15000	8500	16000
Stroke per jaw mm	16	8	16	8	16	8
Gripping force maintained N	-	-	2000	4000	2000	4000
Recommended workpiece weight kg	30	55	30	55	30	55
Weight kg	5,5	5,5	8	8	8	8
Height mm	81	81	111	111	111	111
Ø mm	190	190	190	190	190	190
Mx Nm	170	170	170	170	170	170
My Nm	180	180	180	180	180	180
Mz Nm	130	130	130	130	130	130
Fz N	4300	4300	4300	4300	4300	4300
Operating pressure min./max. without GA/GI bar	2-8	2-8	-	-	-	-
Operating pressure min./max. with GA/GI bar	-	-	4-7	4-7	4-7	4-7
Clamping time s	0,5	0,5	0,4	0,4	0,8	0,8
Opening time s	0,5	0,5	0,8	0,8	0,4	0,4
Air consumption per cycle cm <sup>3</sup>	520	520	520	520	520	520
Max. allowable length of jaw mm	220	210	210	200	200	200

# RZP-160

Max. load on gripper and jaw

Clamping force diagram exterior gripping



3 x Borehole for resilient pressure piece  
 $\text{Ø} 20 \text{ H}8$   
 $\text{Ø} 14 \text{ H}8$   
 32  
 17

RZP 160/3-1 MAX. 102; MIN. 86  
 RZP 160/3-2 MAX. 102; MIN. 94  
 RZP 160/3-1: 52  
 RZP 160/3-2: 60  
 55  
 38  
 88,3

Tubeless direct connection  
 Adapter  
 Gripper  
 $\text{Ø} 7$   
 $\text{Ø} 4$   
 M5  
 1,1  
 O-ring  $\text{Ø} 4 \times 1,5$

RZP 160/3-1 MAX. 61; MIN. 45  
 RZP 160/3-2 MAX. 53; MIN. 45  
 81  
 50  
 17  
 23  
 4  
 $\text{Ø} 14 \text{ h}6$   
 $32 \pm 0,02$   
 $\text{Ø} 190$   
 $\text{Ø} 160$   
 $\text{Ø} 146$   
 $\text{Ø} 6,5$   
 $\text{Ø} 6 \text{ H}7$   
 (2x)  
 M10 (6x)  
 M8 (3x)  
 53  
 $\text{Ø} 9$   
 $\text{Ø} 15$   
 12  
 80

C-nut for magnetic sensors  
 $146 \pm 0,02$   
 $\text{Ø} 8$  Sensor holder (3x)  
 81,3  
 67,5  
 M5 /5 deep for air connection Close  
 19  
 M5 /5 deep for air connection Open  
 19

Type GA/GI with gripping force safety device  
 68  
 110  
 111  
 $\text{Ø} 160$

Accessories: Resilient pressure piece  
 RZP-160/3-1/2: 32  
 RZP-160/3-1/2 GA/GI: 122  
 5  
 Stroke 6  
 Elasticity MIN. 202N  
 MAX. 346N  
 $\text{Ø} 100$   
 $3 \times 120^\circ$   
 80  
 20

Accessories: Protective cover  
 RZP-160/3-1/2: 89,5  
 RZP-160/3-1/2 GA/GI: 119,5  
 4  
 5,5  
 $\text{Ø} 100$   
 82  
 33  
 24  
 112,5  
 MAX. 125,3  
 RZP 160/3-1 MAX. 61; MIN. 45  
 RZP 160/3-2 MAX. 53; MIN. 45

Centric gripper RZP

# RZP-200



## APPLICATION

Universal gripping of round and cylindrical workpieces with three centrally arranged gripper fingers for handling with robots or portals.

## TYPE

Available from sizes 64 to 300, each in two stroke variants. Optionally with gripping force safety device and/or dirt cover. Fastening of the gripper fingers via centering sleeves (included in the scope of delivery).

## CUSTOMER BENEFITS

- ⊕ High gripping force with low dead weight and compact design
- ⊕ High torque support for using long gripper fingers thanks to elongated jaw guide
- ⊕ Maximum flexibility thanks to versatile connection and fastening options
- ⊕ Long service life and high reliability thanks to specially ground base jaws in proven T-slot guide

## TECHNICAL FEATURES

- Centrally clamping in compact design made of high-strength, hard-coated aluminum alloy
- All functional parts made of hardened steel for maximum service life
- Wedge hook principle with pneumatic actuation
- Optional inductive and magnetic position sensors
- Optionally available with FKM seals for higher temperatures up to 150°C (on request)
- Integrated purge air connection to prevent contamination

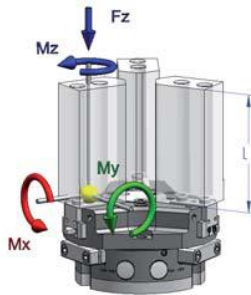
C40  
RZP-200 - 3-jaw centric gripper air operated

Item no.	170080	170081 ▲	170082	170083 ▲	170084	170085 ▲
Design	RZP-200/3-1	RZP-200/3-2	RZP-200/3-1 GA	RZP-200/3-2 GA	RZP-200/3-1 GI	RZP-200/3-2 GI
Gripping force at 6 bar N	7500	12500	9300	15500	9500	16200
Stroke per jaw mm	25	14	25	14	25	14
Gripping force maintained N	-	-	1800	3000	1800	3000
Recommended workpiece weight kg	37	62	37	62	37	62
Weight kg	10	10	13	13	13	13
Height mm	96	96	132	132	132	132
Ø mm	250	250	250	250	250	250
Mx Nm	180	180	180	180	180	180
My Nm	200	200	200	200	200	200
Mz Nm	100	100	100	100	100	100
Fz N	5000	5000	5000	5000	5000	5000
Operating pressure min./max. without GA/GI bar	2-8	2-8	-	-	-	-
Operating pressure min./max. with GA/GI bar	-	-	4-7	4-7	4-7	4-7
Clamping time s	1,2	1,2	1	1	1,5	1,5
Opening time s	1,2	1,2	1,5	1,5	1	1
Air consumption per cycle cm <sup>3</sup>	1000	1000	1000	1000	1000	1000
Max. allowable length of jaw mm	280	250	250	200	250	200

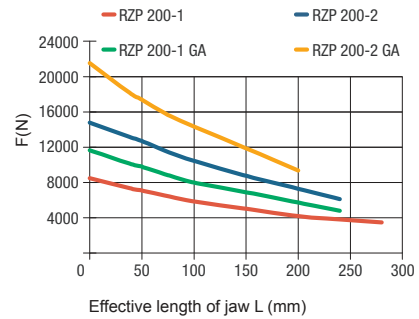
# RZP-200

Max. load on gripper and jaw

Clamping force diagram exterior gripping



Total gripping force F(N) at 6 bar



**3 x Borehole for resilient pressure piece**  
 Ø 22 H8  
 Ø 16 H8  
 38  
 3  
 25.5

**RZP 200/3-1 MAX. 127,5 ; MIN. 102,5**  
**RZP 200/3-2 MAX. 126,5 ; MIN. 112,5**  
 RZP 200/3-1: 64,5  
 RZP 200/3-2: 74,5  
 65  
 50  
 105

**Tubeless direct connection**  
 Adapter  
 Gripper  
 M5  
 O-ring Ø4x1,5  
 1,1  
 Ø7  
 Ø4

**C-nut for magnetic sensors**  
 184 ± 0,02  
 Ø 8 Sensor holder (3x)  
 98  
 87,5  
 23  
 23  
 M5 / 5 deep for air connection Close  
 M5 / 5 deep for air connection Open

**Type GA/GI with gripping force safety device**  
 86  
 131  
 132  
 Ø 200

**Accessories: Resilient pressure piece**  
 RZP-200/3-1/2: 107  
 RZP-200/3-1/2 GA/GI: 143  
 Stroke 6  
 6  
 Elasticity MIN. 238N  
 MAX. 308N  
 Ø 120  
 3x120°  
 100  
 25

**Accessories: Protective cover**  
 RZP-200/3-1/2: 104,5  
 RZP-200/3-1/2 GA/GI: 140,5  
 Stroke 4  
 4  
 5,5  
 94  
 47  
 32  
 138  
 MAX. 159,5  
 RZP 200/3-1 MAX. 74 ; MIN. 49  
 RZP 200/3-2 MAX. 62,3 ; MIN. 48,3

Centric gripper RZP

# RZP-240



## APPLICATION

Universal gripping of round and cylindrical workpieces with three centrally arranged gripper fingers for handling with robots or portals.

## TYPE

Available from sizes 64 to 300, each in two stroke variants. Optionally with gripping force safety device and/or dirt cover.

Fastening of the gripper fingers via centering sleeves (included in the scope of delivery).

## CUSTOMER BENEFITS

- ⊕ High gripping force with low dead weight and compact design
- ⊕ High torque support for using long gripper fingers thanks to elongated jaw guide
- ⊕ Maximum flexibility thanks to versatile connection and fastening options
- ⊕ Long service life and high reliability thanks to specially ground base jaws in proven T-slot guide

## TECHNICAL FEATURES

- Centrally clamping in compact design made of high-strength, hard-coated aluminum alloy
- All functional parts made of hardened steel for maximum service life
- Wedge hook principle with pneumatic actuation
- Optional inductive and magnetic position sensors
- Optionally available with FKM seals for higher temperatures up to 150°C (on request)
- Integrated purge air connection to prevent contamination

C40

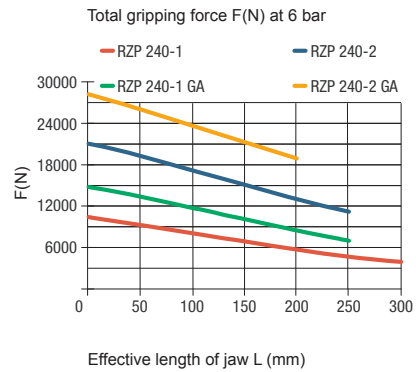
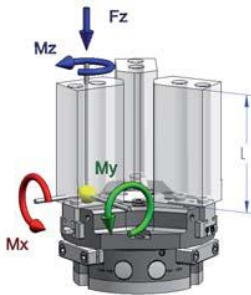
RZP-240 - 3-jaw centric gripper air operated

Item no.	170086	170087 ▲	170088	170089 ▲	170090	170091 ▲
Design	RZP-240/3-1	RZP-240/3-2	RZP-240/3-1 GA	RZP-240/3-2 GA	RZP-240/3-1 GI	RZP-240/3-2 GI
Gripping force at 6 bar N	10500	18000	14000	24000	15000	25000
Stroke per jaw mm	30	17	30	17	30	17
Gripping force maintained N	-	-	3500	6000	3500	6000
Recommended workpiece weight kg	53	90	53	90	53	90
Weight kg	20	20	24	24	24	24
Height mm	128,1	128,1	171,5	171,5	171,5	171,5
Ø mm	290	290	290	290	290	290
Mx Nm	265	265	265	265	265	265
My Nm	250	250	250	250	250	250
Mz Nm	160	160	160	160	160	160
Fz N	6200	6200	6200	6200	6200	6200
Operating pressure min./max. without GA/GI bar	2-8	2-8	-	-	-	-
Operating pressure min./max. with GA/GI bar	-	-	4-7	4-7	4-7	4-7
Clamping time s	1,3	1,3	1,1	1,1	1,7	1,7
Opening time s	1,3	1,3	2,1	2,1	1,1	1,1
Air consumption per cycle cm <sup>3</sup>	1700	1700	1700	1700	1700	1700
Max. allowable length of jaw mm	300	250	250	200	250	200

# RZP-240

Max. load on gripper and jaw

Clamping force diagram exterior gripping



**3 x Borehole for resilient pressure piece**

Ø 28 H8  
Ø 22 H8

46,5  
4  
33,5

RZP 240/3-1 MAX. 146; MIN. 116  
RZP 240/3-2 MAX. 144,5; MIN. 127,5

RZP 240/3-1: 69,5  
RZP 240/3-2: 80

90  
66

**Tubeless direct connection**

Adapter Gripper

Ø 8  
Ø 5  
M5  
1,1  
O-ring Ø5x1,5

**C-nut for magnetic sensors**

220 ± 0,02

Ø 8 Sensor holder (3x)

112  
105

M5 /5 deep for air connection Close  
M5 /5 deep for air connection Open

M5/5 deep for sealing air connection

190,5  
38  
20  
3x 120°  
30°  
121,8  
(110)  
Ø 144  
61/4" /8 deep for air connection (2x)  
15° 15°

128,1  
77  
21  
29  
4  
Ø 16 h6 (6x)  
44 ± 0,02  
RZP 240/3-1 MAX. 88; MIN. 58  
RZP 240/3-2 MAX. 75; MIN. 58

Ø 290  
Ø 240  
Ø 220  
Ø 8 h7 (2x)  
M12 (6x)  
M12 (6x)  
83  
17  
127  
Ø 13,5  
Ø 20

**Type GA/GI with gripping force safety device**

109,4  
170,4  
171,5  
Ø 240

**Accessories: Resilient pressure piece**

RZP-240/3-1/2: 140,5  
RZP-240/3-1/2 GA/GI: 183,9

Stroke 7,5  
Elasticity MIN. 302N  
MAX. 454N

Ø 144  
3x 120°  
130  
27

**Accessories: Protective cover**

RZP-240/3-1/2: 136,6  
RZP-240/3-1/2 GA/GI: 180

5,6  
4

RZP 240/3-1 MAX. 88; MIN. 58  
RZP 240/3-2 MAX. 75; MIN. 58

94  
47  
38  
159  
MAX. 182,5

Centric gripper RZP

# RZP-300



## APPLICATION

Universal gripping of round and cylindrical workpieces with three centrally arranged gripper fingers for handling with robots or portals.

## TYPE

Available from sizes 64 to 300, each in two stroke variants. Optionally with gripping force safety device and/or dirt cover. Fastening of the gripper fingers via centering sleeves (included in the scope of delivery).

## CUSTOMER BENEFITS

- ⊕ High gripping force with low dead weight and compact design
- ⊕ High torque support for using long gripper fingers thanks to elongated jaw guide
- ⊕ Maximum flexibility thanks to versatile connection and fastening options
- ⊕ Long service life and high reliability thanks to specially ground base jaws in proven T-slot guide

## TECHNICAL FEATURES

- Centrally clamping in compact design made of high-strength, hard-coated aluminum alloy
- All functional parts made of hardened steel for maximum service life
- Wedge hook principle with pneumatic actuation
- Optional inductive and magnetic position sensors
- Optionally available with FKM seals for higher temperatures up to 150°C (on request)
- Integrated purge air connection to prevent contamination

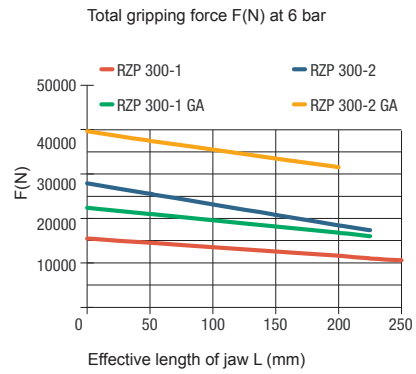
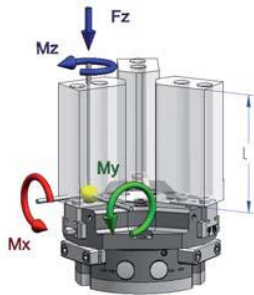
C40  
RZP-300 - 3-jaw centric gripper air operated

Item no.	170092	170093 ▲	170094	170095 ▲	170096	170097 ▲
Design	RZP-300/3-1	RZP-300/3-2	RZP-300/3-1 GA	RZP-300/3-2 GA	RZP-300/3-1 GI	RZP-300/3-2 GI
Gripping force at 6 bar N	16000	28000	20000	37500	22500	38000
Stroke per jaw mm	35	20	35	20	35	20
Gripping force maintained N	-	-	6000	9500	6000	9500
Recommended workpiece weight kg	80	140	80	110	80	140
Weight kg	30	30	40	40	40	40
Height mm	146	146	196	196	196	196
Ø mm	345	345	345	345	345	345
Mx Nm	400	400	400	400	400	400
My Nm	400	400	400	400	400	400
Mz Nm	250	250	250	250	250	250
Fz N	8000	8000	8000	8000	8000	8000
Operating pressure min./max. without GA/GI bar	2-8	2-8	-	-	-	-
Operating pressure min./max. with GA/GI bar	-	-	4-7	4-7	4-7	4-7
Clamping time s	1,3	1,3	1,2	1,2	2	2
Opening time s	1,3	1,3	2,5	2,5	1,2	1,2
Air consumption per cycle cm <sup>3</sup>	2700	2700	2700	2700	2700	2700
Max. allowable length of jaw mm	250	225	225	200	225	200

# RZP-300

Max. load on gripper and jaw

Clamping force diagram exterior gripping



3 x Borehole for resilient pressure piece

Ø 32 H8  
Ø 25 H8

RZP 300/3-1 MAX. 176; MIN. 141  
RZP 300/3-2 MAX. 176.5; MIN. 156.5

RZP 300/3-1: 78  
RZP 300/3-2: 93

Tubeless direct connection

Adapter Gripper

Ø11 Ø8 M8 1,1 O-ring Ø8x1,5

C-nut for magnetic sensors

270±0,02

Ø 8 Sensor holder (3x)

M8 /6 deep for air connection Close

M8 /6 deep for air connection Open

Type GA/GI with gripping force safety device

Accessories: Resilient pressure piece

RZP-300/3-1/2: 162  
RZP-300/3-1/2 GA/GI: 212

Stroke 8

Elasticity MIN. 360N  
MAX. 488N

Accessories: Protective cover

RZP-300/3-1/2: 159.5  
RZP-300/3-1/2 GA/GI: 209.5

RZP 300/3-1 MAX. 114; MIN. 79  
RZP 300/3-2 MAX. 99.5; MIN. 79.5



# Accessories RZP

**Jaw blank - steel** (including fixing screws)  
3-jaw set



Item no.	Number of jaws	Design	For
170500 ▲	3	steel	RZP-64
170502 ▲	3	steel	RZP-80
170504 ▲	3	steel	RZP-100
170506 ▲	3	steel	RZP-125
170508 ▲	3	steel	RZP-160
170510 ▲	3	steel	RZP-200
170512 ▲	3	steel	RZP-240
170514 ▲	3	steel	RZP-300

**Jaw blank - aluminium** (including fixing screws)  
3-jaw set



Item no.	Number of jaws	Design	For
170550 ▲	3	aluminium	RZP-64
170552 ▲	3	aluminium	RZP-80
170554 ▲	3	aluminium	RZP-100
170556 ▲	3	aluminium	RZP-125
170558 ▲	3	aluminium	RZP-160
170560 ▲	3	aluminium	RZP-200
170562 ▲	3	aluminium	RZP-240
170564 ▲	3	aluminium	RZP-300

Protective cover



Item no.	For
170810 ▲	RZP-64
170811 ▲	RZP-80
170812 ▲	RZP-100
170813 ▲	RZP-125
170814 ▲	RZP-160
170815 ▲	RZP-200
170816 ▲	RZP-240
170817 ▲	RZP-300

Resilient pressure piece



Item no.	For
170516 ▲	RZP-64
170517 ▲	RZP-80
170518 ▲	RZP-100
170519 ▲	RZP-125
170520 ▲	RZP-160
170521 ▲	RZP-200
170522 ▲	RZP-240
170523 ▲	RZP-300

Pressure maintenance  
for double acting gripper (G1/8)



Item no.
1078823

Compressed air connection



Item no.	Design	For
802539	L-Plug connector M5 - 6 mm	RZP-50 / RZP-64 / RZP-80
477025	L-Plug connector 1/8 - 6 mm	RZP-100 - RZP-240
477024	L-Plug connector 1/4 - 6 mm	RZP-300

Proximity switch



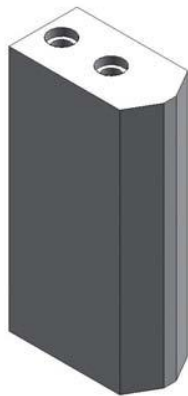
Item no.	Size (diameter/length)	Design	For
229114	M8x1x30,5	5 m cable, open leads	RZP-64 / RZP-80 / RZP-100 / RZP-125 / RZP-160
389661	M8x1x46,5	3 m cable, open leads	RZP-200 / RZP-240 / RZP-300

Magnetic field sensors

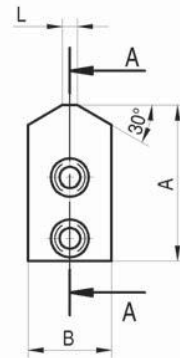
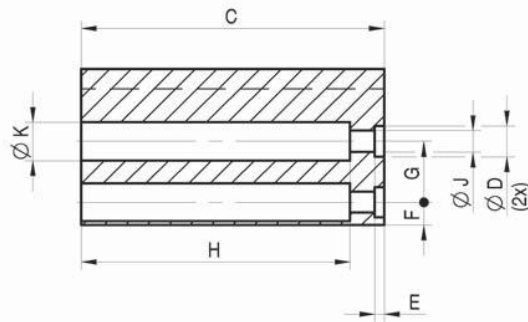


Item no.	Size (diameter/length)	Design	For
1276722	C-Nut	3m cable, 3 open leads	all sizes, all types

# Accessories RZP

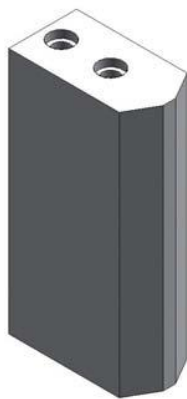


Section A-A

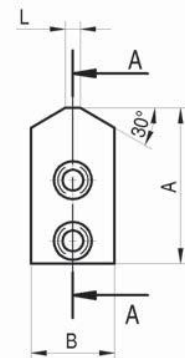
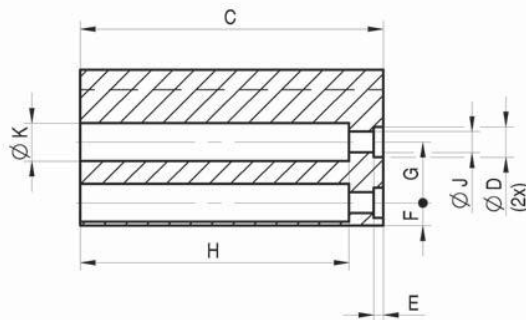


Jaw blank - steel (including fixing screws)

RPP / RZP	64	80	100	125	160	200	240	300
RPP - 2-jaw set	170575	170576	170577	170578	170579	170580	170581	170582
RZP - 3-jaw set	170500	170502	170504	170506	170508	170510	170512	170514
A	32	41	51	60	80	96	109	130
B	20	22	30	35	40	40	50	60
C	64	80	100	125	160	200	220	200
D +0,04/+0,02	6	8	10	10	14	16	16	22
E+0,2	2,5	2,5	3	3	4	4	4	6
F±0,1	5	6	7	9,5	10	15	15,5	20
G±0,1	13	16	20	24	32	40	44	46
H	57	71	91	115	146	181	204	177
J	4,5	5,5	6,6	6,6	11	13,5	13,5	17,5
K	8	10	11	11	18	20	20	26
L	3	4	5	6	8	13	10	16
Weight per jaw Kg	0,25	0,45	1,0	1,75	3,2	5,0	8,0	10,2



Section A-A



Jaw blank - aluminium (including fixing screws)

RPP / RZP	64	80	100	125	160	200	240	300
RPP - 2-jaw set	170585	170586	170587	170588	170589	170590	170591	170592
RZP - 3-jaw set	170550	170552	170554	170556	170558	170560	170562	170564
A	32	41	51	60	80	96	109	130
B	20	25	30	35	40	45	50	60
C	64	80	100	125	160	200	220	200
D +0,04/+0,02	6	8	10	10	14	16	16	22
E+0,2	2,5	2,5	3	3	4	4	4	6
F±0,1	5	6	7	9,5	10	15	15,5	20
G±0,1	13	16	20	24	32	40	44	46
H	55	69	88	112	141	176	200	170
J	4,5	5,5	6,6	6,6	11	13,5	13,5	17,5
K	8	10	11	11	18	20	20	26
L	3	4	5	6	8	9	10	16
Weight per jaw Kg	0,1	0,18	0,35	0,6	1,2	2,0	2,8	3,4