

RZP-A 64



APPLICATION

Universal gripping of round and cylindrical workpieces with three centrally arranged gripper fingers for handling with robots or portals.

TYPE

Available from sizes 64 to 160, each in two stroke variants. Optionally with gripping force safety device and/or dirt cover.

Fastening of the gripper fingers via centering sleeves (included in the scope of delivery).

CUSTOMER BENEFITS

- ③ High gripping force with low dead weight and compact design
- ③ Maximum flexibility thanks to versatile connection and fastening options
- ③ Long service life and high reliability thanks to specially ground base jaws in proven T-slot guide

TECHNICAL FEATURES

- Centrally clamping in compact design made of high-strength, hard-coated aluminum alloy
- All functional parts made of hardened steel for maximum service life
- Wedge hook principle with pneumatic actuation
- Optional inductive and magnetic position sensors
- Optionally available with FKM seals for higher temperatures up to 150°C (on request)
- Integrated purge air connection to prevent contamination

C40

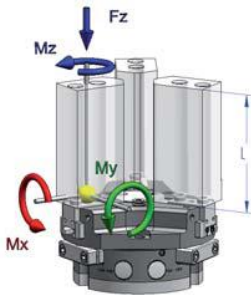
RZP-A 64 - 3-jaw centric gripper air operated with tongue and groove

Item no.	436958 ▲	436959 ▲	436960 ▲	436961 ▲	436962 ▲	436963 ▲
Design	RZP-A 64/3-1	RZP-A 64/3-2	RZP-A 64/3-1 GA	RZP-A 64/3-2 GA	RZP-A 64/3-1 GI	RZP-A 64/3-2 GI
Gripping force at 6 bar N	700	1350	880	1700	1000	1900
Stroke per jaw mm	6	3	6	3	6	3
Gripping force maintained N	-	-	180	350	180	350
Recommended workpiece weight kg	3,5	6,5	3,5	6,5	3,5	6,5
Weight kg	0,4	0,4	0,5	0,5	0,5	0,5
Height mm	42	42	55,5	55,5	55,5	55,5
Ø mm	64	64	64	64	64	64
Mx Nm	15	15	15	15	15	15
My Nm	30	30	30	30	30	30
Mz Nm	25	25	25	25	25	25
Fz N	1400	1400	1400	1400	1400	1400
Operating pressure min./max. without GA/GI bar	2-8	2-8	-	-	-	-
Operating pressure min./max. with GA/GI bar	-	-	4-7	4-7	4-7	4-7
Clamping time s	0,01	0,01	0,03	0,03	0,04	0,04
Opening time s	0,01	0,01	0,04	0,04	0,03	0,03
Air consumption per cycle cm ³	25	25	25	25	25	25
Max. allowable length of jaw mm	64	64	64	64	64	64

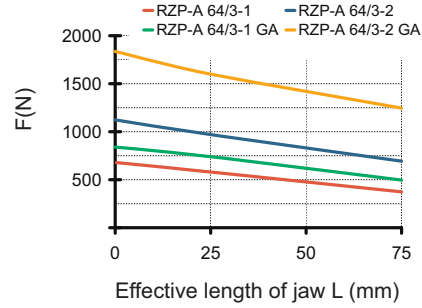
RZP-A 64

Max. load on gripper and jaw

Clamping force diagram exterior gripping



Total gripping force F(N) at 6 bar



RZP-A 64/3-1 MAX. 38; MIN. 32
RZP-A 64/3-2 MAX. 35; MIN. 32

Tubeless direct connection

Type GA/GI with gripping force safety device

Accessories: Resilient pressure piece

Accessories: Protective cover

3-jaw centric gripper RZP-A

RZP-A 80



APPLICATION

Universal gripping of round and cylindrical workpieces with three centrally arranged gripper fingers for handling with robots or portals.

TYPE

Available from sizes 64 to 160, each in two stroke variants. Optionally with gripping force safety device and/or dirt cover.

Fastening of the gripper fingers via centering sleeves (included in the scope of delivery).

CUSTOMER BENEFITS

- ③ High gripping force with low dead weight and compact design
- ③ Maximum flexibility thanks to versatile connection and fastening options
- ③ Long service life and high reliability thanks to specially ground base jaws in proven T-slot guide

TECHNICAL FEATURES

- Centrally clamping in compact design made of high-strength, hard-coated aluminum alloy
- All functional parts made of hardened steel for maximum service life
- Wedge hook principle with pneumatic actuation
- Optional inductive and magnetic position sensors
- Optionally available with FKM seals for higher temperatures up to 150°C (on request)
- Integrated purge air connection to prevent contamination

C40

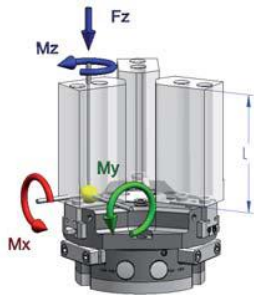
RZP-A 80 - 3-jaw centric gripper air operated with tongue and groove

Item no.	434833 ▲	435042 ▲	434837 ▲	435043 ▲	434838 ▲	435044 ▲
Design	RZP-A 80/3-1	RZP-A 80/3-2	RZP-A 80/3-1 GA	RZP-A 80/3-2 GA	RZP-A 80/3-1 GI	RZP-A 80/3-2 GI
Gripping force at 6 bar N	1000	2500	1600	3400	1700	3500
Stroke per jaw mm	8	4	8	4	8	4
Gripping force maintained N	-	-	350	700	350	700
Recommended workpiece weight kg	5	12	5	12	5	12
Weight kg	0,75	0,75	0,95	0,95	0,95	0,95
Height mm	48	48	63	63	63	63
Ø mm	80	80	80	80	80	80
Mx Nm	30	30	30	30	30	30
My Nm	90	90	90	90	90	90
Mz Nm	35	35	35	35	35	35
Fz N	1800	1800	1800	1800	1800	1800
Operating pressure min./max. without GA/GI bar	2-8	2-8	-	-	-	-
Operating pressure min./max. with GA/GI bar	-	-	4-7	4-7	4-7	4-7
Clamping time s	0,06	0,06	0,05	0,05	0,08	0,08
Opening time s	0,05	0,05	0,08	0,08	0,05	0,05
Air consumption per cycle cm ³	60	60	60	60	60	60
Max. allowable length of jaw mm	80	80	80	80	80	80

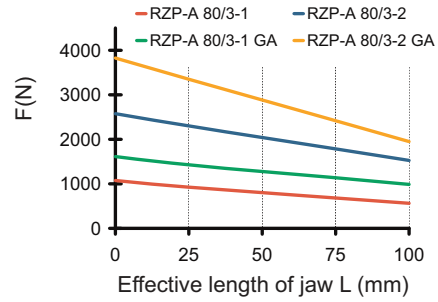
RZP-A 80

Max. load on gripper and jaw

Clamping force diagram exterior gripping



Total gripping force F(N) at 6 bar



RZP-A 80/3-1 MAX. 50; MIN. 42
RZP-A 80/3-2 MAX. 46; MIN. 42

Tubeless direct connection
Adapter Gripper
Ø 7 Ø 4 M4
1,1 O-ring Ø 4x1,5

3 x Borehole for resilient pressure piece
Ø 7,6 H8
17.5 24.5 11 27 9 42 27 M5 (6x) Ø 5 m6 (3x)

Tubeless direct connection
Adapter Gripper
Ø 7 Ø 4 M4
1,1 O-ring Ø 4x1,5

RZP-A 80/3-1 MAX. 34; MIN. 26
RZP-A 80/3-2 MAX. 30; MIN. 26

70±0.02 Ø 4 Sensor holder (3x) 35 32 9 9 M4 /5 deep for air connection Close M4 /5 deep for air connection Open

Type GA/GI with gripping force safety device

Accessories: Resilient pressure piece

MAX. 57 3 Stroke 1100, 4 Elasticity MIN. 30N MAX. 68N Ø 39 3x 120° 39 11

Accessories: Protective cover

57 5 4 41.5 22 12.2 56 MAX. 64 RZP-A 80/3-1 MAX. 34; MIN. 26 RZP-A 80/3-2 MAX. 30; MIN. 26

3-jaw centric gripper RZP-A

RZP-A 100



APPLICATION

Universal gripping of round and cylindrical workpieces with three centrally arranged gripper fingers for handling with robots or portals.

TYPE

Available from sizes 64 to 160, each in two stroke variants. Optionally with gripping force safety device and/or dirt cover.

Fastening of the gripper fingers via centering sleeves (included in the scope of delivery).

CUSTOMER BENEFITS

- ⊕ High gripping force with low dead weight and compact design
- ⊕ Maximum flexibility thanks to versatile connection and fastening options
- ⊕ Long service life and high reliability thanks to specially ground base jaws in proven T-slot guide

TECHNICAL FEATURES

- Centrally clamping in compact design made of high-strength, hard-coated aluminum alloy
- All functional parts made of hardened steel for maximum service life
- Wedge hook principle with pneumatic actuation
- Optional inductive and magnetic position sensors
- Optionally available with FKM seals for higher temperatures up to 150°C (on request)
- Integrated purge air connection to prevent contamination

C40

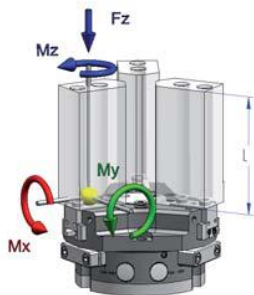
RZP-A 100 - 3-jaw centric gripper air operated with tongue and groove

Item no.	434891 ▲	434892 ▲	434900 ▲	434840 ▲	434839 ▲	434901 ▲
Design	RZP-A 100/3-1	RZP-A 100/3-2	RZP-A 100/3-1 GA	RZP-A 100/3-2 GA	RZP-A 100/3-1 GI	RZP-A 100/3-2 GI
Gripping force at 6 bar N	2000	4000	2500	5000	2650	5100
Stroke per jaw mm	10	5	10	5	10	5
Gripping force maintained N	-	-	500	1000	500	1000
Recommended workpiece weight kg	10	20	10	20	10	20
Weight kg	1,3	1,3	1,9	1,9	1,9	1,9
Height mm	58	58	78	78	78	78
Ø mm	100	100	100	100	100	100
Mx Nm	45	45	45	45	45	45
My Nm	95	95	95	95	95	95
Mz Nm	45	45	45	45	45	45
Fz N	2300	2300	2300	2300	2300	2300
Operating pressure min./max. without GA/GI bar	2-8	2-8	-	-	-	-
Operating pressure min./max. with GA/GI bar	-	-	4-7	4-7	4-7	4-7
Clamping time s	0,1	0,1	0,1	0,1	0,2	0,2
Opening time s	0,1	0,1	0,2	0,2	0,1	0,1
Air consumption per cycle cm ³	120	120	120	120	120	120
Max. allowable length of jaw mm	100	100	100	100	100	100

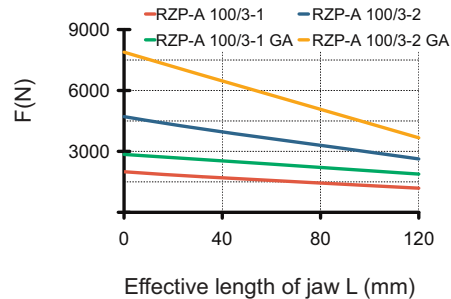
RZP-A 100

Max. load on gripper and jaw

Clamping force diagram exterior gripping



Total gripping force F(N) at 6 bar



3 x Borehole for resilient pressure piece

Ø 12,6 H8

27, 14, 27,5

RZP-A 100/3-1 MAX. 62; MIN. 52
RZP-A 100/3-2 MAX. 57; MIN. 52

M6 (6x), Ø 6 m6 (3x), 9, 52

Tubeless direct connection

Adapter, Gripper, Ø7, Ø4, M5, 1.1, O-ring Ø4x1,5

Ø 100, Ø 90, Ø 6,5 (2x), Ø 5 H7 (2x), 20 ± 0,1, 6, 8 H7 (3x), 6, 2, Ø 6,4, Ø 10,5

M6 (3x), 32, 8, 58, 15, 39, 55, 3, 6, 15, 52

Ø 8 Sensor holder (3x)

90 ± 0,02, 45, 42, 12, 12

M4 / 4 deep for air connection Close, M5 / 5 deep for air connection Open

3x 120°, (78), 27, 14,2, 10,5, 15°, 15°, 61,8° / 8 deep for air connection (2x), Ø 50,5, Ø 8, M4

Type GA/GI with gripping force safety device

58, 20, Ø 77, Ø 100, 55

Accessories: Resilient pressure piece

MAX. 68,8, 4, Stroke 5, Elasticity MIN. 45N MAX. 67N, Ø 50,5, 49, 15, 3x 120°

Accessories: Protective cover

5,5, 68, 4,5, 44,9, 24, 14,2, 68, MAX. 78, RZP-A 100/3-1 MAX. 42; MIN. 32, RZP-A 100/3-2 MAX. 37; MIN. 32

3-jaw centric gripper RZP-A

RZP-A 125



APPLICATION

Universal gripping of round and cylindrical workpieces with three centrally arranged gripper fingers for handling with robots or portals.

TYPE

Available from sizes 64 to 160, each in two stroke variants. Optionally with gripping force safety device and/or dirt cover.

Fastening of the gripper fingers via centering sleeves (included in the scope of delivery).

CUSTOMER BENEFITS

- ⊕ High gripping force with low dead weight and compact design
- ⊕ Maximum flexibility thanks to versatile connection and fastening options
- ⊕ Long service life and high reliability thanks to specially ground base jaws in proven T-slot guide

TECHNICAL FEATURES

- Centrally clamping in compact design made of high-strength, hard-coated aluminum alloy
- All functional parts made of hardened steel for maximum service life
- Wedge hook principle with pneumatic actuation
- Optional inductive and magnetic position sensors
- Optionally available with FKM seals for higher temperatures up to 150°C (on request)
- Integrated purge air connection to prevent contamination

C40

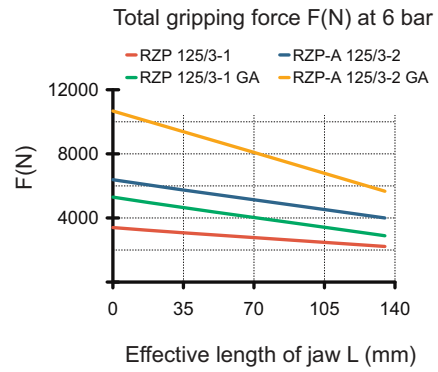
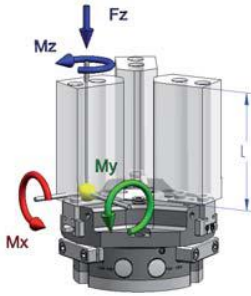
RZP-A 125 - 3-jaw centric gripper air operated with tongue and groove

Item no.	434841 ▲	434902 ▲	434842 ▲	434914 ▲	434843 ▲	434915 ▲
Design	RZP-A 125/3-1	RZP-A 125/3-2	RZP-A 125/3-1 GA	RZP-A 125/3-2 GA	RZP-A 125/3-1 GI	RZP-A 125/3-2 GI
Gripping force at 6 bar N	3300	6500	4200	8100	4300	8300
Stroke per jaw mm	13	6	13	6	13	6
Gripping force maintained N	-	-	900	1600	800	1600
Recommended workpiece weight kg	16	32	16	32	16	32
Weight kg	2,3	2,3	3,4	3,4	3,4	3,4
Height mm	66	66	80,5	80,5	80,5	80,5
Ø mm	125	125	125	125	125	125
Mx Nm	60	60	60	60	60	60
My Nm	100	100	100	100	100	100
Mz Nm	70	70	70	70	70	70
Fz N	2500	2500	2500	2500	2500	2500
Operating pressure min./max. without GA/GI bar	2-8	2-8	-	-	-	-
Operating pressure min./max. with GA/GI bar	-	-	4-7	4-7	4-7	4-7
Clamping time s	0,2	0,2	0,15	0,15	0,35	0,35
Opening time s	0,2	0,2	0,35	0,35	0,15	0,15
Air consumption per cycle cm ³	230	230	230	230	230	230
Max. allowable length of jaw mm	125	125	125	125	125	125

RZP-A 125

Max. load on gripper and jaw

Clamping force diagram exterior gripping



RZP-A 125/3-1 MAX. 78,5; MIN. 65,5
RZP-A 125/3-2 MAX. 71,5; MIN. 65,5

Tubeless direct connection

RZP-A 125/3-1 MAX. 54; MIN. 41
RZP-A 125/3-2 MAX. 47; MIN. 41

Type GA/GI with gripping force safety device

Accessories: Resilient pressure piece

Accessories: Protective cover

3-jaw centric gripper RZP-A

RZP-A 160



APPLICATION

Universal gripping of round and cylindrical workpieces with three centrally arranged gripper fingers for handling with robots or portals.

TYPE

Available from sizes 64 to 160, each in two stroke variants. Optionally with gripping force safety device and/or dirt cover.

Fastening of the gripper fingers via centering sleeves (included in the scope of delivery).

CUSTOMER BENEFITS

- ③ High gripping force with low dead weight and compact design
- ③ Maximum flexibility thanks to versatile connection and fastening options
- ③ Long service life and high reliability thanks to specially ground base jaws in proven T-slot guide

TECHNICAL FEATURES

- Centrally clamping in compact design made of high-strength, hard-coated aluminum alloy
- All functional parts made of hardened steel for maximum service life
- Wedge hook principle with pneumatic actuation
- Optional inductive and magnetic position sensors
- Optionally available with FKM seals for higher temperatures up to 150°C (on request)
- Integrated purge air connection to prevent contamination

C40

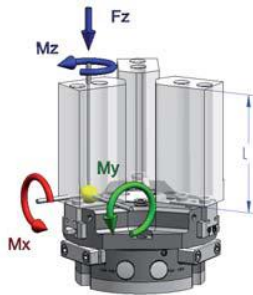
RZP-A 160 - 3-jaw centric gripper air operated with tongue and groove

Item no.	435045 ▲	435046 ▲	435055 ▲	435056 ▲	435057 ▲	435058 ▲
Design	RZP-A 160/3-1	RZP-A 160/3-2	RZP-A 160/3-1 GA	RZP-A 160/3-2 GA	RZP-A 160/3-1 GI	RZP-A 160/3-2 GI
Gripping force at 6 bar N	6000	12000	8000	16000	8500	16500
Stroke per jaw mm	16	8	16	8	16	8
Gripping force maintained N	-	-	2000	4000	2000	4000
Recommended workpiece weight kg	30	60	30	60	30	60
Weight kg	4,5	4,5	6,6	6,6	6,6	6,6
Height mm	78	78	108	108	108	108
Ø mm	160	160	160	160	160	160
Mx Nm	80	80	80	80	80	80
My Nm	100	100	100	100	100	100
Mz Nm	80	80	80	80	80	80
Fz N	2800	2800	2800	2800	2800	2800
Operating pressure min./max. without GA/GI bar	2-8	2-8	-	-	-	-
Operating pressure min./max. with GA/GI bar	-	-	4-7	4-7	4-7	4-7
Clamping time s	0,4	0,4	0,4	0,4	0,8	0,8
Opening time s	0,4	0,4	0,8	0,8	0,4	0,4
Air consumption per cycle cm ³	520	520	520	520	520	520
Max. allowable length of jaw mm	160	160	160	160	160	160

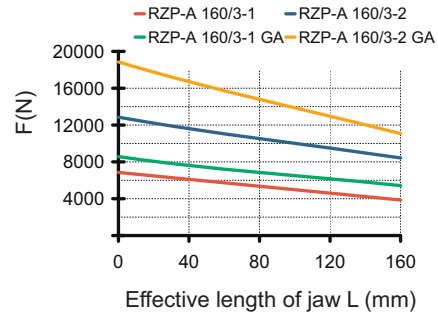
RZP-A 160

Max. load on gripper and jaw

Clamping force diagram exterior gripping



Total gripping force F(N) at 6 bar



RZP-A 160/3-1 MAX. 101 ; MIN. 85
RZP-A 160/3-2 MAX. 93 ; MIN. 85

Tubeless direct connection

M4 / 5 deep for air connection
Close

M4 / 5 deep for air connection
Open

RZP-A 160/3-1 MAX. 71 ; MIN. 55
RZP-A 160/3-2 MAX. 63 ; MIN. 55

Type GA/GI with gripping force safety device

Accessories: Resilient pressure piece

Elasticity MIN. 210N
MAX. 350N

Accessories: Protective cover

RZP-A 160/3-1 MAX. 71 ; MIN. 55
RZP-A 160/3-2 MAX. 63 ; MIN. 55

Accessories RZP-A

Jaw blank - steel (including fixing screws)
3-jaw set



Item no.	Number of jaws	Design	For
170825 ▲	3	steel	RZP-A 64
170826 ▲	3	steel	RZP-A 80
170827 ▲	3	steel	RZP-A 100
170828 ▲	3	steel	RZP-A 125
170829 ▲	3	steel	RZP-A 160

Jaw blank - aluminium (including fixing screws)
3-jaw set



Item no.	Number of jaws	Design	For
170835 ▲	3	aluminium	RZP-A 64
170836 ▲	3	aluminium	RZP-A 80
170837 ▲	3	aluminium	RZP-A 100
170838 ▲	3	aluminium	RZP-A 125
170839 ▲	3	aluminium	RZP-A 160

Resilient pressure piece



Item no.	For
165573 ▲	RZP-A 64
170868 ▲	RZP-A 80
170870 ▲	RZP-A 100
170871 ▲	RZP-A 125
170872 ▲	RZP-A 160

Pressure maintenance
for double acting gripper (G1/8)



Item no.
1078823

Compressed air connection



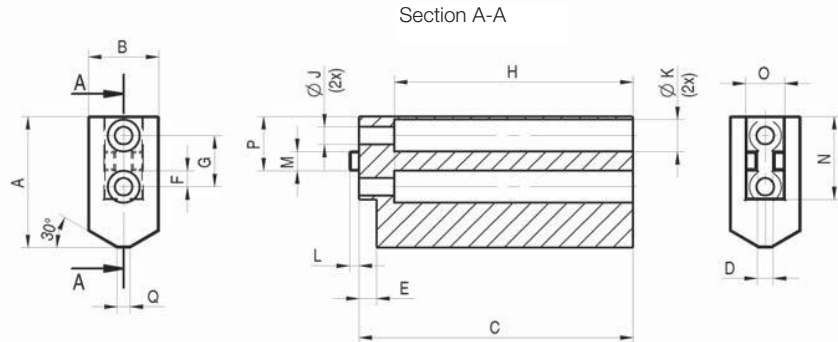
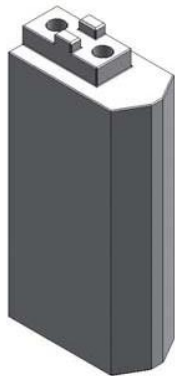
Item no.	Design	For
802539	L-Plug connector M5 - 6 mm	RZP-A 64 / RZP-A 80
477025	L-Plug connector 1/8 - 6 mm	RZP-A 100 / RZP-A 125 RZP-A160

Proximity switch



Item no.	Size (diameter/length)	Design	For
229114	M8x1x30,5	5 m cable, open leads	RZP-A 64 - RZP-A 160

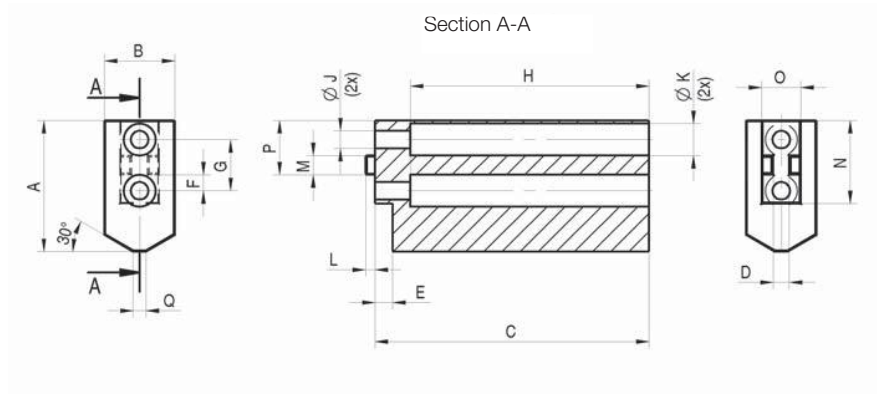
Accessories RZP-A



Jaw blank - steel (including fixing screws)

RPP-A / RZP-A Jaw blank - steel	64	80	100	125	160
RPP-A - 2-jaw set	170675	170676	170677	170678	170679
RZP-A - 3-jaw set	170825	170826	170827	170828	170829
A	32	41	51	60	80
B	20	22	30	35	40
C	68,5	85,5	105,5	130,5	166,5
D +0,01/+0,03	4	5	6	6	8
E+0,2	4,5	5,5	5,5	5,5	6,5
F±0,1	4	5	6	8	11
G±0,1	13	16	20	24	32
H	59,5	74,5	94,5	119,5	153,5
J	4,5	5,5	6,6	6,6	9
K	8	10	11	11	15
L	2,5	3	3	3,5	4
Mf7	5	6	8	8	10
N-0,3/-0,5	21	26	33	41	51
O-0,3/-0,5	10,2	12,2	14,2	16,2	20,2
P+0,1	14	17	21	25,5	31
Q	3	4	5	6	8
Weight per jaw Kg	0,26	0,46	1,0	1,8	3,5

Accessories RZP-A



Jaw blank - aluminium (including fixing screws)

RPP-A / RZP-A Jaw blank - aluminium	64	80	100	125	160
RPP-A - 2-jaw set	170685	170686	170687	170688	170689
RZP-A - 3-jaw set	170835	170836	170837	170838	170839
A	32	41	51	60	80
B	20	22	30	35	40
C	68,5	85,5	105,5	130,5	166,5
D +0,01/+0,03	4	5	6	6	8
E+0,2	4,5	5,5	5,5	5,5	6,5
F±0,1	4	5	6	8	11
G±0,1	13	16	20	24	32
H	59,5	74,5	94,5	119,5	153,5
J	4,5	5,5	6,6	6,6	9
K	8	10	11	11	15
L	2,5	3	3	3,5	4
Mf7	5	6	8	8	10
N-0,3/-0,5	21	26	33	41	51
O-0,3/-0,5	10,2	12,2	14,2	16,2	20,2
P+0,1	14	17	21	25,5	31
Q	3	4	5	6	8
Weight per jaw Kg	0,1	0,16	0,35	0,62	1,2