

# RGPO-4060



### APPLICATION

Premium large stroke gripper with large stroke and ground jaw guides.

### CUSTOMER BENEFITS

- ③ Up to 5 million cycles maintenance-free
- ③ Available on request: temperature-resistant version (up to approx. 150° C)

### TECHNICAL FEATURES

- Gripper body made of high-strength, hard-coated aluminum
- Toothed racks, intermediate jaws and gear wheel made of hardened steel
- High torque absorption of the intermediate jaws due to the robust flat guide of the toothed racks
- Suitable for the use of long top jaws
- Centric clamping is realized via the synchronization of the two toothed racks with one gear wheel
- Special gripper type available with additional spring set to prevent loss of gripping force during external or internal gripping
- Energy supply possible by means of screw connection or via hoseless direct connection

RGPO 4060 - 2-jaw large stroke gripper air operated

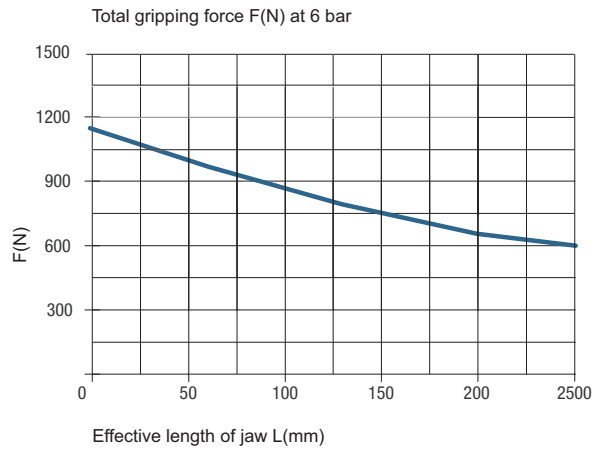
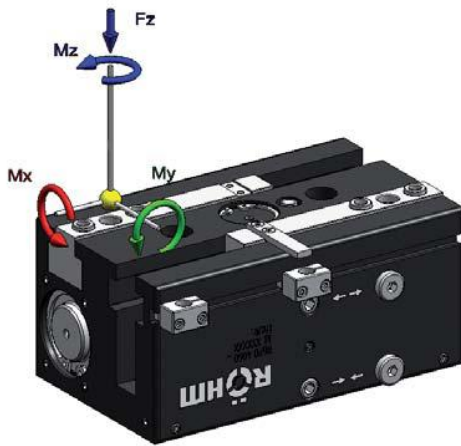
Item no.	172774	172775
Design	RGPO 4060	RGPO 4060-GA
Gripping force at 6 bar N	1250	1920
Stroke per jaw mm	60	60
Recommended workpiece weight kg	5,5	5,5
Weight kg	3,8	4,2
Width mm	170	170
Height mm	80	80
Depth mm	100	100
Mx Nm	80	80
My Nm	125	125
Mz Nm	100	100
Fz N	3000	3000
Operating pressure min./max. without GA/GI bar	3-8	
Operating pressure min./max. with GA/GI bar		4-8
Clamping time s	0,35	0,4
Opening time s	0,35	0,35
Air consumption per cycle cm <sup>3</sup>	278	278
Max. allowable length of jaw mm	150	150

2-jaw long stroke gripper

# RGPO-4060

Max. load on gripper and jaw

Clamping force diagram exterior gripping



Technical drawing of the gripper showing dimensions: 110, HUB 60, 10, 15 ± 0.02, 15 ± 0.02, 11, 9, Relubrication, Sensor-Ø 8, 100, M6 / 9 (2x), 9, M6 / 9 (2x), 40 ± 0.02, 40, 16.7, 4.7, 1.9, M6 (6x), Ø 6 H7 / 8 (2x), Ø 10 h6 (4x), M5 / 6 for direct connection (2x), Ø 8 H7 / 8 (2x), 35, 80, 120 ± 0.02, 35.

Tubeless direct connection

Adapter, Gripper, Ø 9, Ø 5, M 5, 1.5, O-Ring Ø5x2,0

100, 15, M10 (2x), 54, 3, Ø 8,2, Ø 15, 16, 29, 25, 25

170, 8, (42), 43, 50, G1/8" / 9deep Air connection (2x)

Typ: GA with gripping force safety device

47.5, 45, 47.5, 45, 52, 170, 52, 55.3

2-jaw long stroke gripper

# RGPO-40100



### APPLICATION

Premium large stroke gripper with large stroke and ground jaw guides.

### CUSTOMER BENEFITS

- ③ Up to 5 million cycles maintenance-free
- ③ Available on request: temperature-resistant version (up to approx. 150° C)

### TECHNICAL FEATURES

- Gripper body made of high-strength, hard-coated aluminum
- Toothed racks, intermediate jaws and gear wheel made of hardened steel
- High torque absorption of the intermediate jaws due to the robust flat guide of the toothed racks
- Suitable for the use of long top jaws
- Centric clamping is realized via the synchronization of the two toothed racks with one gear wheel
- Special gripper type available with additional spring set to prevent loss of gripping force during external or internal gripping on request
- Energy supply possible by means of screw connection or via hoseless direct connection

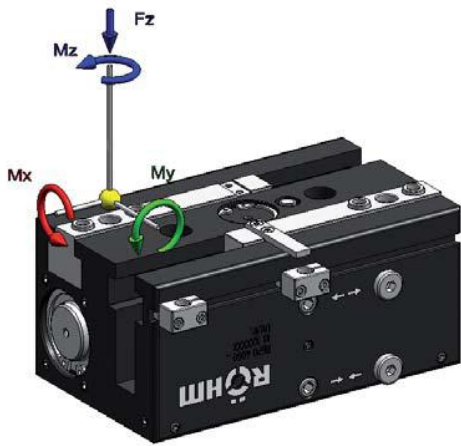
RGPO 40100 - 2-jaw large stroke gripper air operated

Item no.	172777
Design	RGPO 40100
Gripping force at 6 bar N	1250
Stroke per jaw mm	100
Recommended workpiece weight kg	5,5
Weight kg	5,3
Width mm	170
Height mm	80
Depth mm	100
Mx Nm	80
My Nm	125
Mz Nm	100
Fz N	3000
Operating pressure min./max. without GA/GI bar	3-8
Clamping time s	0,35
Opening time s	0,35
Air consumption per cycle cm <sup>3</sup>	278
Max. allowable length of jaw mm	150

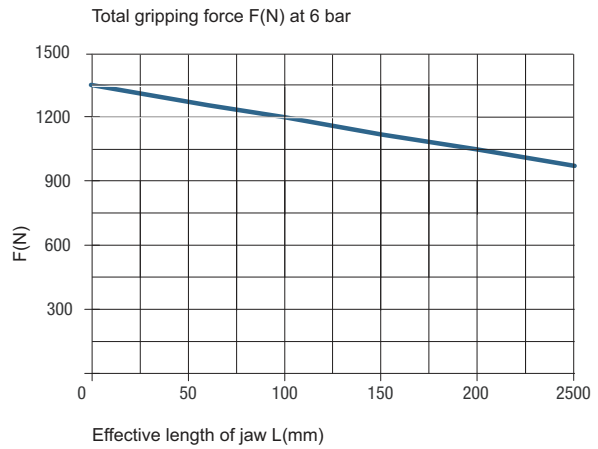
2-jaw long stroke grip-  
per

# RGPO-40100

Max. load on gripper and jaw



Clamping force diagram exterior gripping



Tubeless direct connection

2-jaw long stroke gripper

# RGPO-6360



### APPLICATION

Premium large stroke gripper with large stroke and ground jaw guides.

### CUSTOMER BENEFITS

- ⊕ Up to 5 million cycles maintenance-free
- ⊕ Available on request: temperature-resistant version (up to approx. 150° C)

### TECHNICAL FEATURES

- Gripper body made of high-strength, hard-coated aluminum
- Toothed racks, intermediate jaws and gear wheel made of hardened steel
- High torque absorption of the intermediate jaws due to the robust flat guide of the toothed racks
- Suitable for the use of long top jaws
- Centric clamping is realized via the synchronization of the two toothed racks with one gear wheel
- Special gripper type available with additional spring set to prevent loss of gripping force during external or internal gripping
- Energy supply possible by means of screw connection or via hoseless direct connection

RGPO 6360 - 2-jaw large stroke gripper air operated

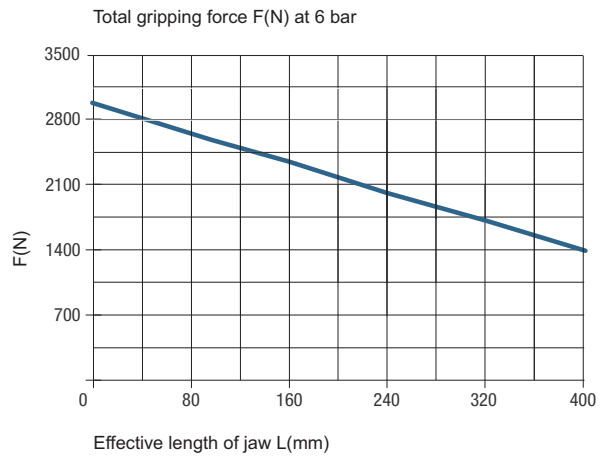
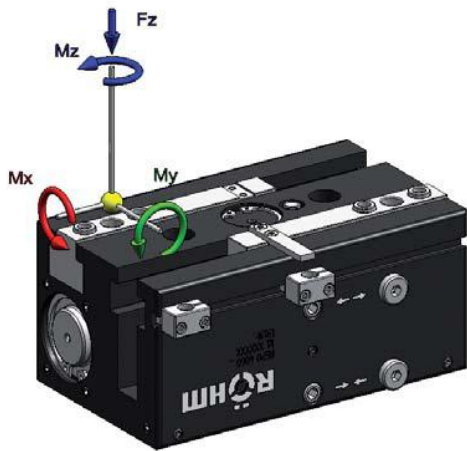
Item no.	172794	172795
Design	RGPO 6360	RGPO 6360-GA
Gripping force at 6 bar N	3000	4000
Stroke per jaw mm	60	60
Recommended workpiece weight kg	15	15
Weight kg	10	11
Width mm	185	185
Height mm	121,5	121,5
Depth mm	154	154
Mx Nm	200	200
My Nm	300	300
Mz Nm	250	250
Fz N	9000	9000
Operating pressure min./max. without GA/GI bar	3-8	
Operating pressure min./max. with GA/GI bar		4-8
Clamping time s	0,4	0,4
Opening time s	0,4	0,5
Air consumption per cycle cm <sup>3</sup>	710	710
Max. allowable length of jaw mm	200	200

2-jaw long stroke gripper

# RGPO-6360

Max. load on gripper and jaw

Clamping force diagram exterior gripping



Tubeless direct connection

Type: GA with gripping force safety device

2-jaw long stroke gripper

# RGPO-63100



### APPLICATION

Premium large stroke gripper with large stroke and ground jaw guides.

### CUSTOMER BENEFITS

- ③ Up to 5 million cycles maintenance-free
- ③ Available on request: temperature-resistant version (up to approx. 150° C)

### TECHNICAL FEATURES

- Gripper body made of high-strength, hard-coated aluminum
- Toothed racks, intermediate jaws and gear wheel made of hardened steel
- High torque absorption of the intermediate jaws due to the robust flat guide of the toothed racks
- Suitable for the use of long top jaws
- Centric clamping is realized via the synchronization of the two toothed racks with one gear wheel
- Special gripper type available with additional spring set to prevent loss of gripping force during external or internal gripping on request
- Energy supply possible by means of screw connection or via hoseless direct connection

RGPO 63100 - 2-jaw large stroke gripper air operated

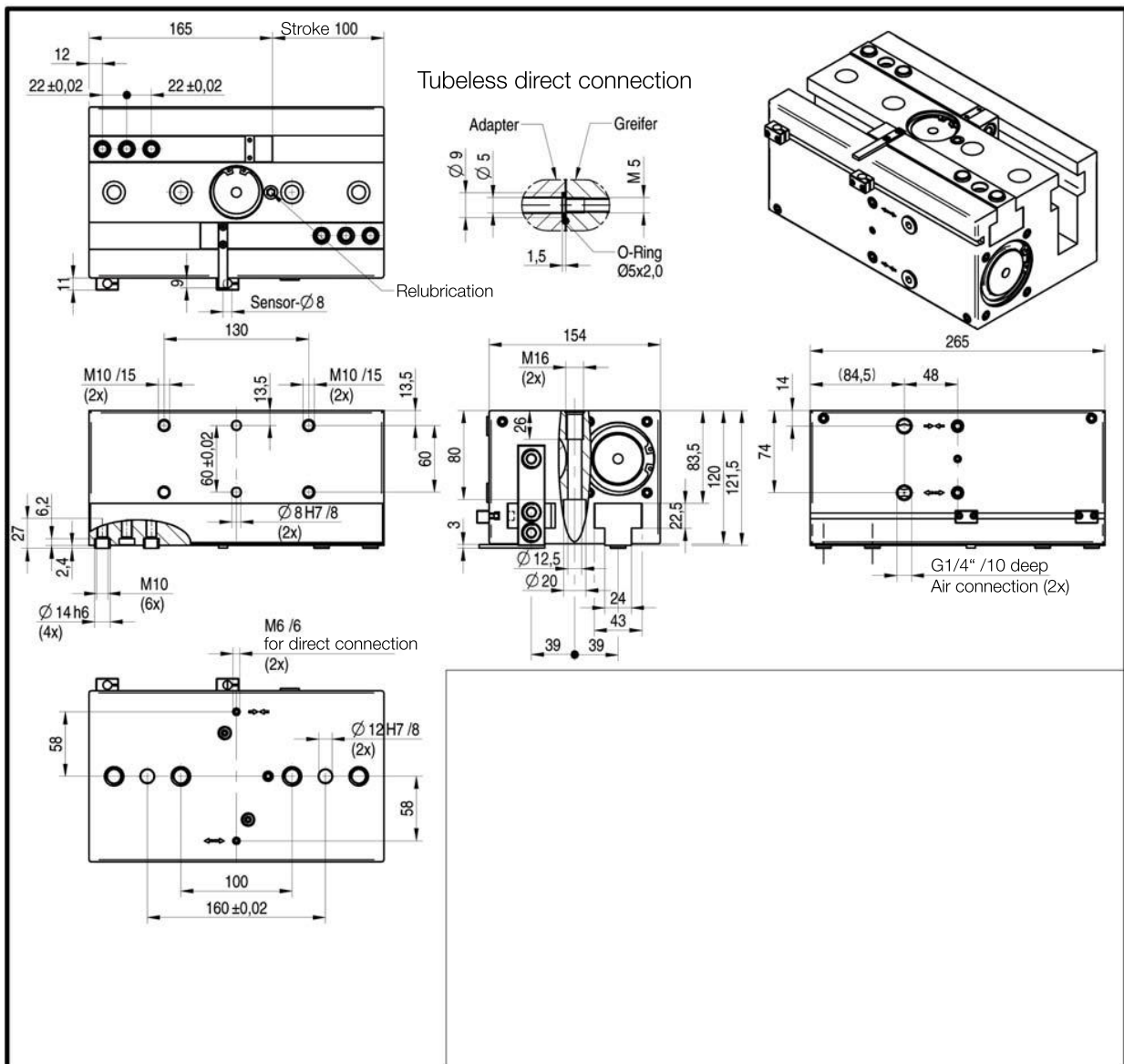
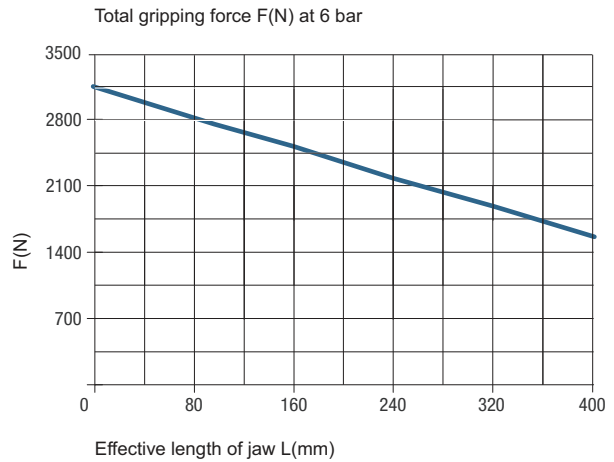
Item no.	172797
Design	RGPO 63100
Gripping force at 6 bar N	3000
Stroke per jaw mm	100
Recommended workpiece weight kg	15
Weight kg	13,4
Width mm	185
Height mm	121,5
Depth mm	154
Mx Nm	200
My Nm	300
Mz Nm	250
Fz N	9000
Operating pressure min./max. without GA/GI bar	3-8
Clamping time s	0,7
Opening time s	0,7
Air consumption per cycle cm <sup>3</sup>	1180
Max. allowable length of jaw mm	200

2-jaw long stroke grip-  
per

# RGPO-63100

Max. load on gripper and jaw

Clamping force diagram exterior gripping



2-jaw long stroke gripper