

RPP-A 50



APPLICATION

Universal gripping of round and angular workpieces with two parallel gripper fingers for handling with robots or portals.

TYPE

Available from sizes 50 to 160, each in two stroke variants. Optionally with gripping force safety device and/or dirt cover. Fastening of the gripper fingers via tongue and groove.

CUSTOMER BENEFITS

- ③ High gripping force with low dead weight and compact design
- ③ Maximum flexibility thanks to versatile connection and fastening options
- ③ Long service life and high reliability thanks to specially ground base jaws in proven T-slot guide

TECHNICAL FEATURES

- Centrally clamping in compact design made of high-strength, hard-coated aluminum alloy
- All functional parts made of hardened steel for maximum service life
- Wedge hook principle with pneumatic actuation (hydraulic actuation available on request)
- Position monitoring with inductive or magnetic position sensors
- Optionally available with FKM seals for higher temperatures up to 150°C (on request)
- Integrated purge air connection to prevent contamination

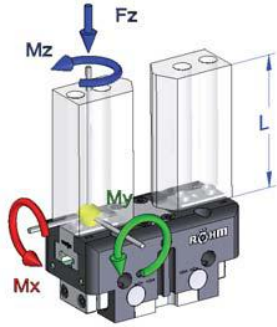
C40

RPP-A 50 - 2-jaw parallel gripper air operated with tongue and groove

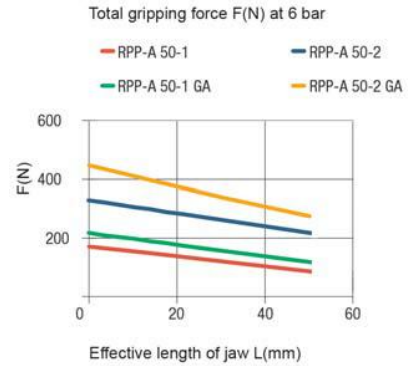
Item no.	438040 ▲	438041 ▲	438042 ▲	438043 ▲	438044 ▲	438045 ▲
Design	RPP-A 50-1	RPP-A 50-2	RPP-A 50-2/GA	RPP-A 50-2/GA	RPP-A 50-1/GI	RPP-A 50-2/GI
Gripping force at 6 bar N	170	320	210	380	220	410
Stroke per jaw mm	4	2	4	2	4	2
Gripping force maintained N	-	-	30	60	30	60
Recommended workpiece weight kg	0,85	1,6	0,85	1,6	0,85	1,6
Weight kg	0,13	0,16	0,17	0,17	0,17	0,17
Width mm	50	50	50	50	50	50
Height mm	47	47	47	47	47	47
Depth mm	28	28	28	28	28	28
Mx Nm	12	12	12	12	12	12
My Nm	10	10	10	10	10	10
Mz Nm	10	10	10	10	10	10
Fz N	250	250	250	250	250	250
Operating pressure min./max. without GA/GI bar	2-8	2-8				
Operating pressure min./max. with GA/GI bar			4-6,5	4-6,5	4-6,5	4-6,5
Clamping time s	0,02	0,02	0,01	0,01	0,02	0,02
Opening time s	0,02	0,02	0,02	0,02	0,01	0,01
Air consumption per cycle cm ³	5	5	5	5	5	5
Max. allowable length of jaw mm	50	50	50	50	50	50

RPP-A 50

Max. load on gripper and jaw



Clamping force diagram exterior gripping



RPP-A 50-1 MAX. 35.8; MIN. 27
RPP-A 50-2 MAX. 31.4; MIN. 27
MAX. 58.8

Tubeless direct connection
Adapter
Gripper
O-ring Ø3x1.0
Sensor holder Ø4 (2x)

M3 /3 deep (2x) direct connection

Section A-A

Type GA/GI with gripping force safety device

Accessories: Protective cover

2-jaw parallel gripper RPP-A

RPP-A 64



APPLICATION

Universal gripping of round and angular workpieces with two parallel gripper fingers for handling with robots or portals.

TYPE

Available from sizes 50 to 160, each in two stroke variants. Optionally with gripping force safety device and/or dirt cover. Fastening of the gripper fingers via tongue and groove.

CUSTOMER BENEFITS

- ③ High gripping force with low dead weight and compact design
- ③ Maximum flexibility thanks to versatile connection and fastening options
- ③ Long service life and high reliability thanks to specially ground base jaws in proven T-slot guide

TECHNICAL FEATURES

- Centrally clamping in compact design made of high-strength, hard-coated aluminum alloy
- All functional parts made of hardened steel for maximum service life
- Wedge hook principle with pneumatic actuation (hydraulic actuation available on request)
- Position monitoring with inductive or magnetic position sensors
- Optionally available with FKM seals for higher temperatures up to 150°C (on request)
- Integrated purge air connection to prevent contamination

C40

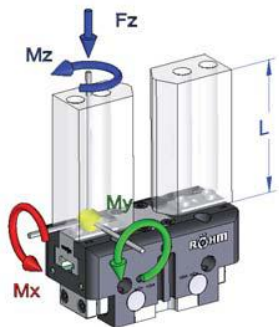
RPP-A 64 - 2-jaw parallel gripper air operated with tongue and groove

Item no.	436763	436764	436765 ▲	436766 ▲	436767 ▲	436768 ▲
Design	RPP-A 64-1	RPP-A 64-2	RPP-A 64-1/GA	RPP-A 64-2/GA	RPP-A 64-1/GI	RPP-A 64-2/GI
Gripping force at 6 bar N	240	450	320	600	350	650
Stroke per jaw mm	6	3	6	3	6	3
Gripping force maintained N	-	-	80	150	80	150
Recommended workpiece weight kg	1,2	2,2	1,2	2,2	1,2	2,2
Weight kg	0,3	0,3	0,42	0,42	0,42	0,42
Width mm	64	64	64	64	64	64
Height mm	40	40	58	58	58	58
Depth mm	36	36	36	36	36	36
Mx Nm	15	15	15	15	15	15
My Nm	30	30	30	30	30	30
Mz Nm	25	25	25	25	25	25
Fz N	450	450	450	450	450	450
Operating pressure min./max. without GA/GI bar	2-8	2-8	-	-	-	-
Operating pressure min./max. with GA/GI bar	-	-	4-7	4-7	4-7	4-7
Clamping time s	0,02	0,02	0,01	0,01	0,02	0,02
Opening time s	0,02	0,02	0,02	0,02	0,1	0,1
Air consumption per cycle cm ³	10	10	10	10	10	10
Max. allowable length of jaw mm	64	64	64	64	64	64

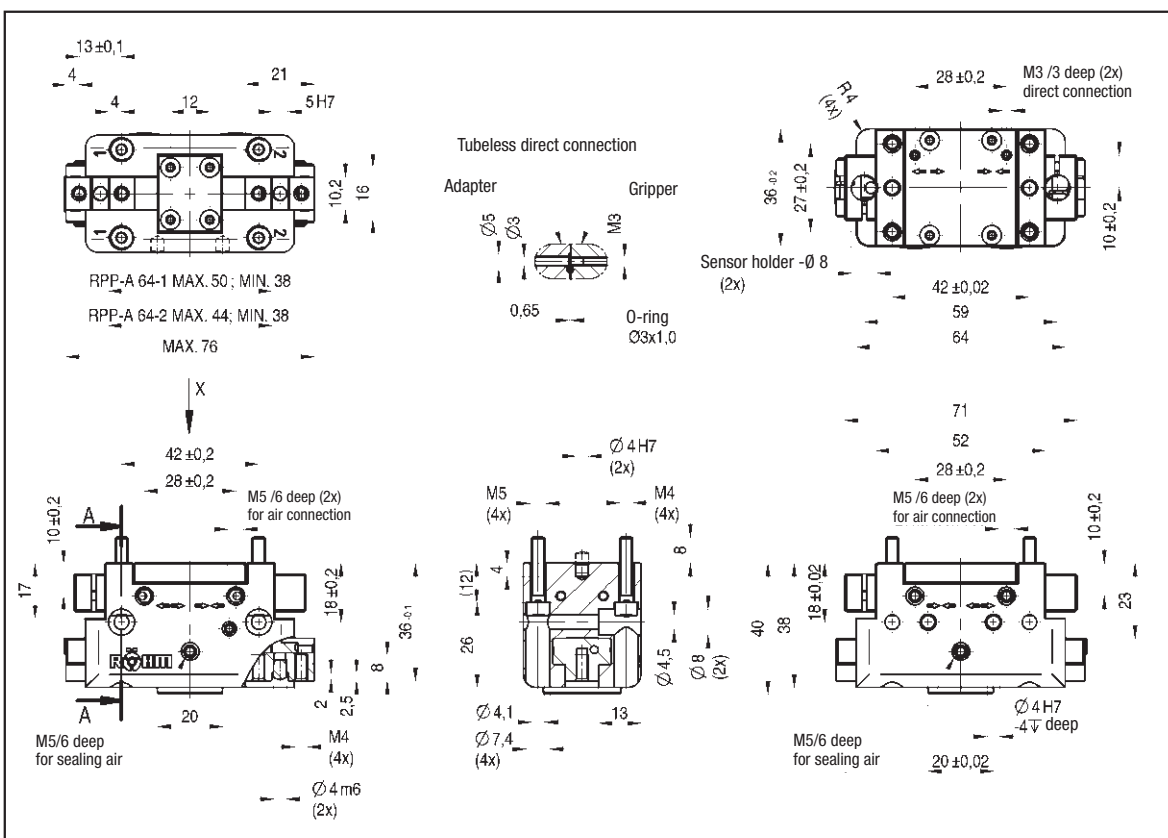
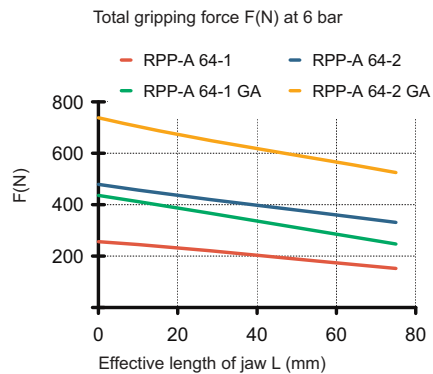
2-jaw parallel gripper RPP-A

RPP-A 64

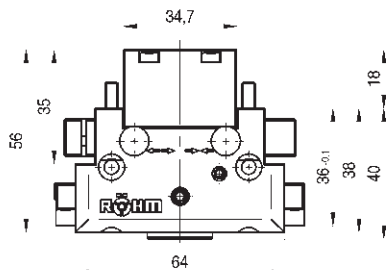
Max. load on gripper and jaw



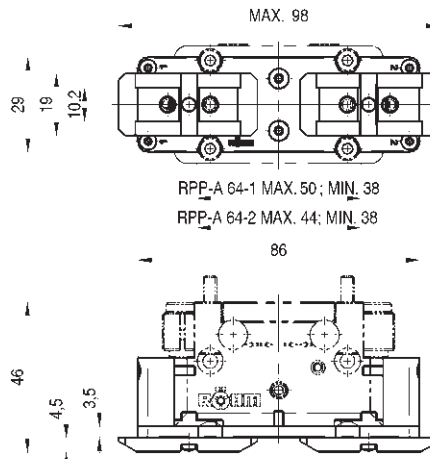
Clamping force diagram exterior gripping



Type GA/GI with gripping force safety device



Accessories: Protective cover



2-jaw parallel gripper RPP-A

RPP-A 80



APPLICATION

Universal gripping of round and angular workpieces with two parallel gripper fingers for handling with robots or portals.

TYPE

Available from sizes 50 to 160, each in two stroke variants. Optionally with gripping force safety device and/or dirt cover. Fastening of the gripper fingers via tongue and groove.

CUSTOMER BENEFITS

- ③ High gripping force with low dead weight and compact design
- ③ Maximum flexibility thanks to versatile connection and fastening options
- ③ Long service life and high reliability thanks to specially ground base jaws in proven T-slot guide

TECHNICAL FEATURES

- Centrally clamping in compact design made of high-strength, hard-coated aluminum alloy
- All functional parts made of hardened steel for maximum service life
- Wedge hook principle with pneumatic actuation (hydraulic actuation available on request)
- Position monitoring with inductive or magnetic position sensors
- Optionally available with FKM seals for higher temperatures up to 150°C (on request)
- Integrated purge air connection to prevent contamination

C40

RPP-A 80 - 2-jaw parallel gripper air operated with tongue and groove

Item no.	434844 ▲	435027 ▲	435028 ▲	435029 ▲	435030 ▲	435031 ▲
Design	RPP-A 80-1	RPP-A 80-2	RPP-A 80-1/GA	RPP-A 80-2/GA	RPP-A 80-1/GI	RPP-A 80-2/GI
Gripping force at 6 bar N	380	700	520	970	550	1000
Stroke per jaw mm	8	4	8	4	8	4
Gripping force maintained N	-	-	140	270	140	270
Recommended workpiece weight kg	1,9	3,5	1,9	3,5	1,9	3,5
Weight kg	0,45	0,45	0,6	0,6	0,6	0,6
Width mm	80	80	80	80	80	80
Height mm	50	50	71	71	71	71
Depth mm	42	42	42	42	42	42
Mx Nm	30	30	30	30	30	30
My Nm	90	90	90	90	90	90
Mz Nm	35	35	35	35	35	35
Fz N	600	600	600	600	600	600
Operating pressure min./max. without GA/GI bar	2-8	2-8	-	-	-	-
Operating pressure min./max. with GA/GI bar	-	-	4-7	4-7	4-7	4-7
Clamping time s	0,03	0,03	0,02	0,02	0,03	0,03
Opening time s	0,03	0,03	0,03	0,03	0,02	0,02
Air consumption per cycle cm ³	20	20	20	20	20	20
Max. allowable length of jaw mm	80	80	80	80	80	80

RPP-A 100



APPLICATION

Universal gripping of round and angular workpieces with two parallel gripper fingers for handling with robots or portals.

TYPE

Available from sizes 50 to 160, each in two stroke variants. Optionally with gripping force safety device and/or dirt cover. Fastening of the gripper fingers via tongue and groove.

CUSTOMER BENEFITS

- ③ High gripping force with low dead weight and compact design
- ③ Maximum flexibility thanks to versatile connection and fastening options
- ③ Long service life and high reliability thanks to specially ground base jaws in proven T-slot guide

TECHNICAL FEATURES

- Centrally clamping in compact design made of high-strength, hard-coated aluminum alloy
- All functional parts made of hardened steel for maximum service life
- Wedge hook principle with pneumatic actuation (hydraulic actuation available on request)
- Position monitoring with inductive or magnetic position sensors
- Optionally available with FKM seals for higher temperatures up to 150°C (on request)
- Integrated purge air connection to prevent contamination

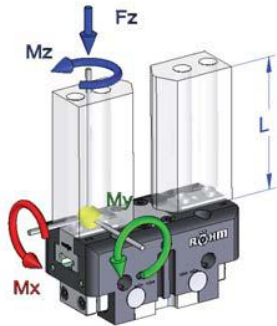
C40

RPP-A 100 - 2-jaw parallel gripper air operated with tongue and groove

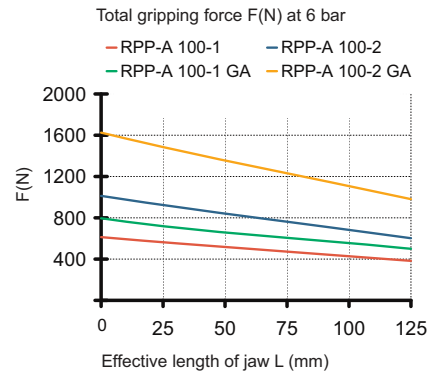
Item no.	434845 ▲	435032 ▲	435033 ▲	434846 ▲	435034 ▲	435035 ▲
Design	RPP-A 100-1	RPP-A 100-2	RPP-A 100-1/GA	RPP-A 100-2/GA	RPP-A 100-1/GI	RPP-A 100-2/GI
Gripping force at 6 bar N	600	1160	750	1450	800	1550
Stroke per jaw mm	10	5	10	5	10	5
Gripping force maintained N	-	-	150	290	150	290
Recommended workpiece weight kg	3	5,5	3	5,5	3	5,5
Weight kg	0,75	0,75	0,95	0,95	0,95	0,95
Width mm	100	100	100	100	100	100
Height mm	56	56	82,5	82,5	82,5	82,5
Depth mm	50	50	50	50	50	50
Mx Nm	45	45	45	45	45	45
My Nm	95	95	95	95	95	95
Mz Nm	45	45	45	45	45	45
Fz N	800	800	800	800	800	800
Operating pressure min./max. without GA/GI bar	2-8	2-8	-	-	-	-
Operating pressure min./max. with GA/GI bar	-	-	4-7	4-7	4-7	4-7
Clamping time s	0,05	0,05	0,03	0,03	0,05	0,05
Opening time s	0,05	0,05	0,05	0,05	0,03	0,03
Air consumption per cycle cm ³	40	40	40	40	40	40
Max. allowable length of jaw mm	100	100	100	100	100	100

RPP-A 100

Max. load on gripper and jaw



Clamping force diagram exterior gripping



RPP-A 100-1 MAX. 80; MIN. 60
RPP-A 100-2 MAX. 70; MIN. 60
MAX. 120

Tubeless direct connection

Adapter Gripper
Ø7 Ø4 M5
1.1 O-ring Ø4x1.5

Sensor holder -0.8 (2x)
50.02 38±0.2 Clamping sleeve Ø6.5 (4x)
44±0.2 M5 /5 deep (2x) direct connection (2x)
13±0.2

66±0.2 48±0.2 G1/8" /8 deep (2x) air connection
14±0.2 28 25±0.2 11 51.01 2.5 3 19 11 14 6 35 35 56 54 25±0.02 14±0.2 35 56 54 25±0.02 50±0.02
M5/6 deep for sealing air Ø 5H7 (2x) M6 (4x) M5 (4x) Ø 5.1 19 Ø 6.6 Ø 11 (2x) M5/6 deep (2x) for air connection Ø 5H7 -6 deep

Type GA/GI with gripping force safety device

54 80.5 54.5 51.01 54 56 100

Accessories: Protective cover

MAX. 152 39 24 14.2 64 5.5 4.5

RPP-A 100-1 MAX. 80; MIN. 60
RPP-A 100-2 MAX. 70; MIN. 60

2-jaw parallel gripper RPP-A

RPP-A 125



APPLICATION

Universal gripping of round and angular workpieces with two parallel gripper fingers for handling with robots or portals.

TYPE

Available from sizes 50 to 160, each in two stroke variants. Optionally with gripping force safety device and/or dirt cover. Fastening of the gripper fingers via tongue and groove.

CUSTOMER BENEFITS

- ③ High gripping force with low dead weight and compact design
- ③ Maximum flexibility thanks to versatile connection and fastening options
- ③ Long service life and high reliability thanks to specially ground base jaws in proven T-slot guide

TECHNICAL FEATURES

- Centrally clamping in compact design made of high-strength, hard-coated aluminum alloy
- All functional parts made of hardened steel for maximum service life
- Wedge hook principle with pneumatic actuation (hydraulic actuation available on request)
- Position monitoring with inductive or magnetic position sensors
- Optionally available with FKM seals for higher temperatures up to 150°C (on request)
- Integrated purge air connection to prevent contamination

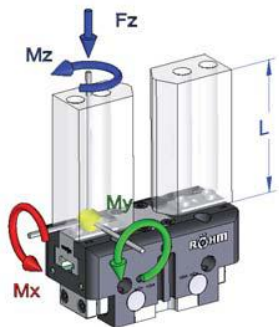
C40

RPP-A 125 - 2-jaw parallel gripper air operated with tongue and groove

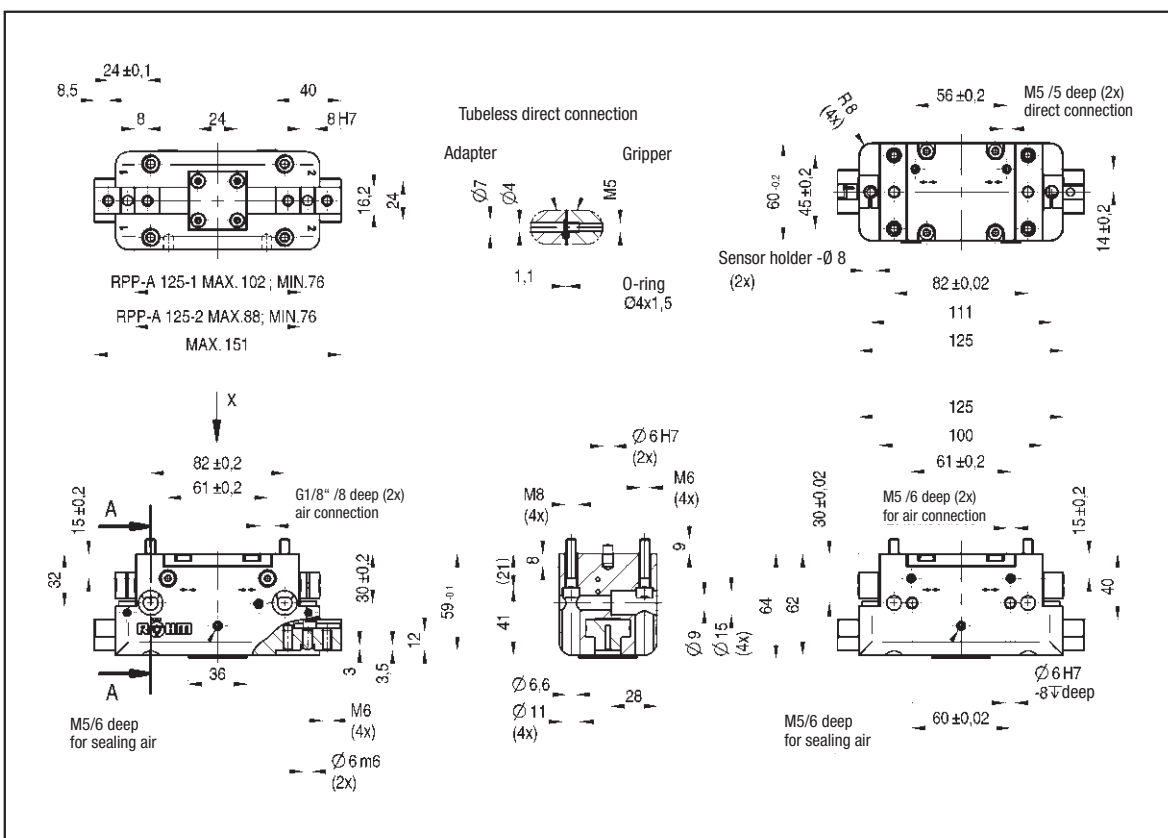
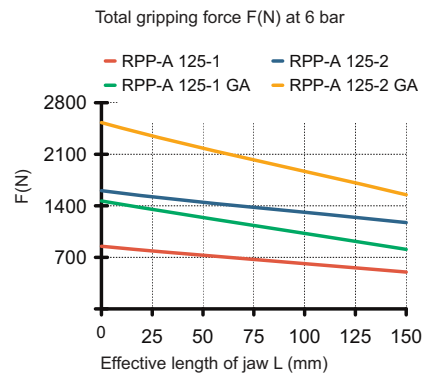
Item no.	435036 ▲	435037 ▲	435038 ▲	434847 ▲	435039 ▲	435040 ▲
Design	RPP-A 125-1	RPP-A 125-2	RPP-A 125-1/GA	RPP-A 125-2/GA	RPP-A 125-1/GI	RPP-A 125-2/GI
Gripping force at 6 bar N	950	1900	1230	2450	1300	2520
Stroke per jaw mm	13	6	13	6	13	6
Gripping force maintained N	-	-	280	550	280	550
Recommended workpiece weight kg	4,5	9,5	4,5	9,5	4,5	9,5
Weight kg	1,3	1,3	1,65	1,65	1,65	1,65
Width mm	125	125	125	125	125	125
Height mm	64	64	104	104	104	104
Depth mm	60	60	60	60	60	60
Mx Nm	60	60	60	60	60	60
My Nm	100	100	100	100	100	100
Mz Nm	70	70	70	70	70	70
Fz N	900	900	900	900	900	900
Operating pressure min./max. without GA/GI bar	2-8	2-8	-	-	-	-
Operating pressure min./max. with GA/GI bar	-	-	4-7	4-7	4-7	4-7
Clamping time s	0,08	0,08	0,07	0,07	0,1	0,1
Opening time s	0,08	0,08	0,1	0,1	0,07	0,07
Air consumption per cycle cm ³	70	70	70	70	70	70
Max. allowable length of jaw mm	125	125	125	125	125	125

RPP-A 125

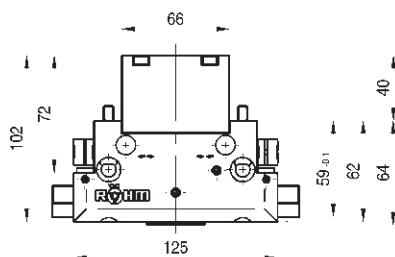
Max. load on gripper and jaw



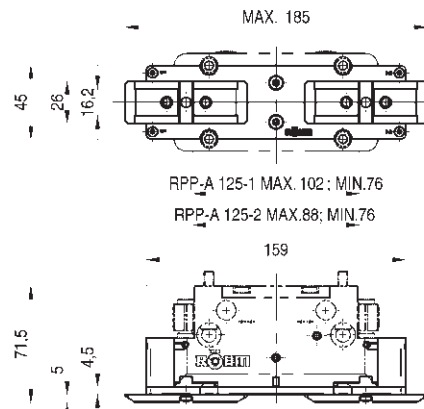
Clamping force diagram exterior gripping



Type GA/GI with gripping force safety device



Accessories: Protective cover



2-jaw parallel gripper RPP-A

RPP-A 160



APPLICATION

Universal gripping of round and angular workpieces with two parallel gripper fingers for handling with robots or portals.

TYPE

Available from sizes 50 to 160, each in two stroke variants. Optionally with gripping force safety device and/or dirt cover. Fastening of the gripper fingers via tongue and groove.

CUSTOMER BENEFITS

- ③ High gripping force with low dead weight and compact design
- ③ Maximum flexibility thanks to versatile connection and fastening options
- ③ Long service life and high reliability thanks to specially ground base jaws in proven T-slot guide

TECHNICAL FEATURES

- Centrally clamping in compact design made of high-strength, hard-coated aluminum alloy
- All functional parts made of hardened steel for maximum service life
- Wedge hook principle with pneumatic actuation (hydraulic actuation available on request)
- Position monitoring with inductive or magnetic position sensors
- Optionally available with FKM seals for higher temperatures up to 150°C (on request)
- Integrated purge air connection to prevent contamination

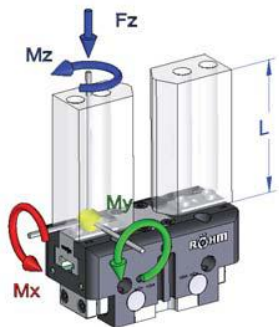
C40

RPP-A 160 - 2-jaw parallel gripper air operated with tongue and groove

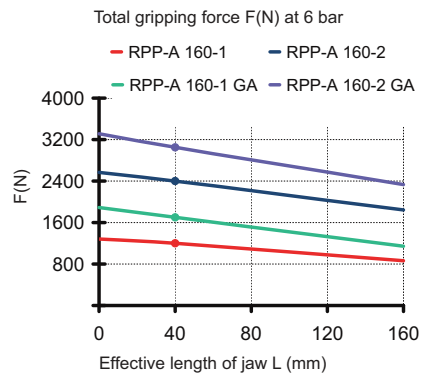
Item no.	434848 ▲	435041 ▲	436525 ▲	436526 ▲	436527 ▲	436528 ▲
Design	RPP-A 160-1	RPP-A 160-2	RPP-A 160-1/GA	RPP-A 160-2/GA	RPP-A 160-1/GI	RPP-A 160-2/GI
Gripping force at 6 bar N	1300	2500	1700	3300	1850	3450
Stroke per jaw mm	16	8	16	8	16	8
Gripping force maintained N	-	-	400	800	400	800
Recommended workpiece weight kg	6,5	12,5	6,5	12,5	6,5	12,5
Weight kg	2,5	2,5	3,1	3,1	3,1	3,1
Width mm	160	160	160	160	160	160
Height mm	78	78	126	126	126	126
Depth mm	72	72	72	72	72	72
Mx Nm	80	80	80	80	80	80
My Nm	100	100	100	100	100	100
Mz Nm	80	80	80	80	80	80
Fz N	1100	1100	1100	1100	1100	1100
Operating pressure min./max. without GA/GI bar	2-8	2-8	-	-	-	-
Operating pressure min./max. with GA/GI bar	-	-	4-7	4-7	4-7	4-7
Clamping time s	0,1	0,1	0,12	0,12	0,3	0,3
Opening time s	0,1	0,1	0,3	0,3	0,12	0,12
Air consumption per cycle cm ³	130	130	130	130	130	130
Max. allowable length of jaw mm	160	160	160	160	160	160

RPP-A 160

Max. load on gripper and jaw



Clamping force diagram exterior gripping



RPP-A 160-1 MAX. 132; MIN. 100
RPP-A 160-2 MAX. 116; MIN. 100
MAX. 192

Tubeless direct connection

Adapter Gripper

Ø7 Ø4 M5 1,1 O-ring Ø4x1,5

Sensor holder Ø 8 (2x)

70 ±0,2 M5 /5 deep (2x) direct connection

72 ±0,2 56 ±0,2 12 ±0,2

100 ±0,02 140 160

154 125 74 ±0,2

M5 /6 deep (2x) for air connection

18 ±0,2 49

28 ±0,02 76 76 ±0,02

M5/6 deep for sealing air

Ø 6 H7 (2x) M6 (4x) 10 10

Ø 9 Ø 15 (4x) 78

Ø 6,6 40

Ø 11 (4x)

76 ±0,02

Type GA/GI with gripping force safety device

80 124 87 160 72 ±0,1 76 78 48

Accessories: Protective cover

MAX. 234

52 31 20,2

RPP-A 160-1 MAX. 132; MIN. 100
RPP-A 160-2 MAX. 116; MIN. 100

202

88 7,5 4,5

2-jaw parallel gripper RPP-A

Accessories RPP-A

Jaw blank - steel (including fixing screws) 2-jaw set



Item no.	Number of jaws	Design	For
170683 ▲	2	steel	RPP-A 50
170675 ▲	2	steel	RPP-A 64
170676 ▲	2	steel	RPP-A 80
170677 ▲	2	steel	RPP-A 100
170678 ▲	2	steel	RPP-A 125
170679 ▲	2	steel	RPP-A 160

Jaw blank - aluminium (including fixing screws) 2-jaw set



Item no.	Number of jaws	Design	For
170693 ▲	2	aluminium	RPP-A 50
170685 ▲	2	aluminium	RPP-A 64
170686 ▲	2	aluminium	RPP-A 80
170687 ▲	2	aluminium	RPP-A 100
170688 ▲	2	aluminium	RPP-A 125
170689 ▲	2	aluminium	RPP-A 160

Protective cover



Item no.	For
170708 ▲	RPP-A 50
170700 ▲	RPP-A 64
170701 ▲	RPP-A 80
170702 ▲	RPP-A 100
170703 ▲	RPP-A 125
170704 ▲	RPP-A 160

Compressed air connection



Item no.	Design	For
802539	L-Plug connector M5 - 6 mm	RPP-A 50 / RPP-A 64 / RPP-A 80
477025	L-Plug connector 1/8 - 6 mm	RPP-A 100 - RPP-A 160

Pressure maintenance for double acting gripper (G1/8)



Item no.
1078823

Proximity switch



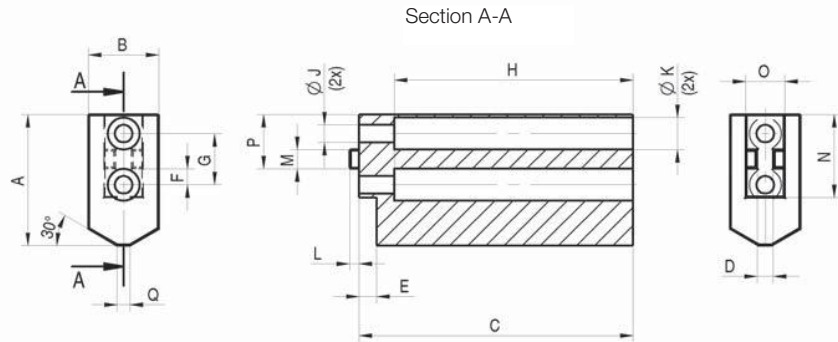
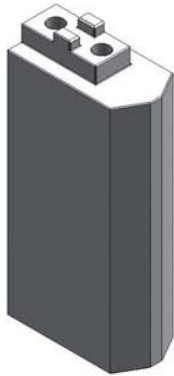
Item no.	Size (diameter/ length)	Design	For
1149503	3x27	30 cm cable, plug M8x1-S49	RPP-50
229114	M8x1x30,5	5 m cable, open leads	RPP-A 64 / RPP-A 80 / RPP-A 100
389661	M8x1x46,5	3 m cable, open leads	RPP-A 125 - RPP-A 160

Magnetic field sensors



Item no.	Size (diameter/ length)	Design	For
1306268	C-Nut	2 m cable, open leads	RPP-A 50
1276722	C-Nut	3 m cable, open leads	RPP-A 64 - RPP-A 160

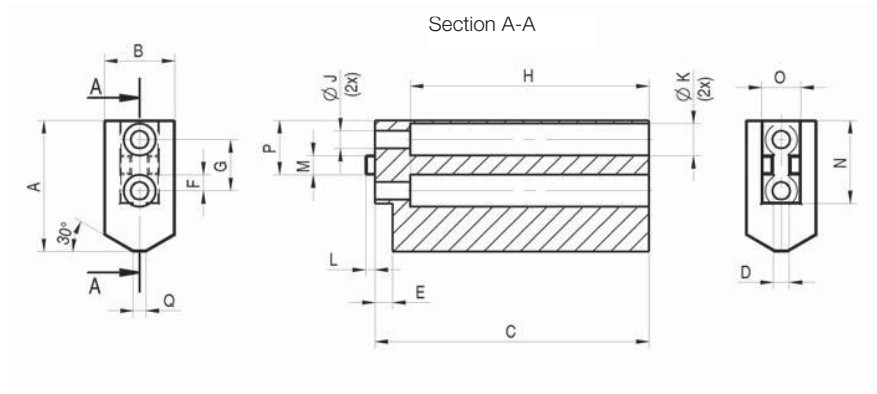
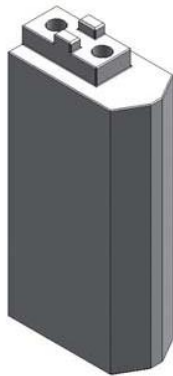
Accessories RPP-A



Jaw blank - steel (including fixing screws)

RPP-A / RZP-A Jaw blank - steel	50	64	80	100	125	160
RPP-A - 2-jaw set	170683	170675	170676	170677	170678	170679
RZP-A - 3-jaw set	-	170825	170826	170827	170828	170829
A	26	32	41	51	60	80
B	15	20	22	30	35	40
C	50	68,5	85,5	105,5	130,5	166,5
D +0,01/+0,03	4	4	5	6	6	8
E+0,2	2	4,5	5,5	5,5	5,5	6,5
F±0,1	3,5	4	5	6	8	11
G±0,1	12	13	16	20	24	32
H	45,5	59,5	74,5	94,5	119,5	153,5
J	3,4	4,5	5,5	6,6	6,6	9
K	6	8	10	11	11	15
L	2	2,5	3	3	3,5	4
Mf7	5	5	6	8	8	10
N-0,3/-0,5	22,825	21	26	33	41	51
O-0,3/-0,5	8	10,2	12,2	14,2	16,2	20,2
P+0,1	12,5	14	17	21	25,5	31
Q	4	3	4	5	6	8
Weight per jaw Kg	0,13	0,26	0,46	1,0	1,8	3,5

Accessories RPP-A



Jaw blank - aluminium (including fixing screws)

RPP-A / RZP-A Jaw blank - aluminium	50	64	80	100	125	160
RPP-A - 2-jaw set	170693	170685	170686	170687	170688	170689
RZP-A - 3-jaw set	-	170835	170836	170837	170838	170839
A	26	32	41	51	60	80
B	15	20	22	30	35	40
C	50	68,5	85,5	105,5	130,5	166,5
D +0,01/+0,03	4	4	5	6	6	8
E+0,2	2	4,5	5,5	5,5	5,5	6,5
F±0,1	3,5	4	5	6	8	11
G±0,1	12	13	16	20	24	32
H	45,5	59,5	74,5	94,5	119,5	153,5
J	3,4	4,5	5,5	6,6	6,6	9
K	6	8	10	11	11	15
L	2	2,5	3	3	3,5	4
Mf7	5	5	6	8	8	10
N-0,3/-0,5	22,825	21	26	33	41	51
O-0,3/-0,5	8	10,2	12,2	14,2	16,2	20,2
P+0,1	12,5	14	17	21	25,5	31
Q	4	3	4	5	6	8
Weight per jaw Kg	0,13	0,1	0,16	0,35	0,62	1,2