



APPLICATION

For universal use on milling machines and machining centers.

TYPE

Standard version.
Clamping system mechanical-hydraulic with power transmitter, manually operated.

CUSTOMER BENEFITS

- ⊕ Horizontal, vertical and laterally clampable with height adjustment ± 0.02
- ⊕ For high reliability, long service life and high precision
- ⊕ Fast clamping range adjustment via locking pins

TECHNICAL FEATURES

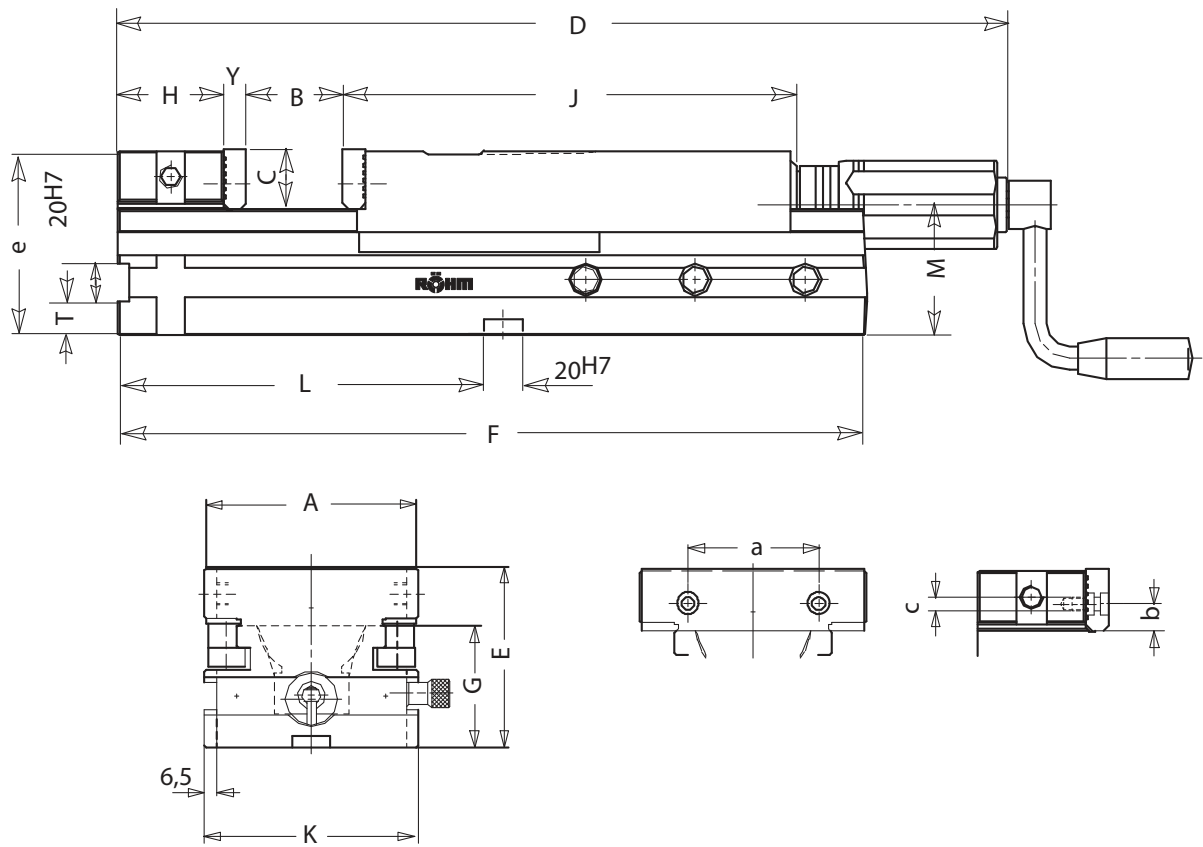
- Sturdy, maintenance-free spindle
- Quickly exchangeable hydraulic unit
- With normal jaws and hand crank
- Locking pin is protected against dirt and chips
- Steel body with stationary clamping jaw
- Blocking mechanism for pre-clamping workpieces
- Automatic reclamping in the hydraulic unit by means of built-in disc springs
- All wear parts, especially the jaw guides, are hardened and ground
- Robust flat-trajectory guide of moving jaw

A27
RBA, standard version, with normal jaws SGN and hand crank

Item no.	153394	153395	153396	153397
Size	1	2	3	4
Jaw width A mm	92	113	135	160
B mm	0-100	0-170	0-220	0-310
B1 mm		0-175	0-225	0-310
B2 mm		125-300	138-363	146-454
B3 mm		199-374	220-445	248-556
C mm	31,6	31,6	39,6	49,6
Dmax mm	490	583	681	817
E $\pm 0,02$ mm	91,2	97,7	112,7	133,7
F mm	310	390	468	574
G $\pm 0,02$ mm	59	65,5	72,5	83,5
H $\pm 0,02$ mm	50	55	70	80
J mm	218	236,5	262	298
K $\pm 0,02$ mm	94	115	137	162
L $\pm 0,02$ mm	130	190	190	240
M mm	61,5	68	78	93
T $\pm 0,02$ mm	12,5	17,5	17,5	22,5
Y-0,01 mm	11,6	11,6	15,6	15,6
a mm	63	63	80	100
b mm	13,6	13,6	15,6	19,6
c mm	M6	M6	M8	M8
d mm	12	12	13	13
e $\pm 0,02$ mm	89,5	96	111	132
Clamping force kN	25	30	40	50
Weight kg	15,5	24	39	60



NC power vices RBA



Accessories RBA

A37

Draw-down jaws SNF, with spring plate, hardened and ground


Item no.	Contents of delivery	Size	Width mm	Height mm
077104	set	2a	113	31,6
077105	set	125	135	39,6
077106	set	160	160	49,6

A37

Normal jaw SGN, one side smooth, one side grooved, both sides ground


Item no.	Contents of delivery	Size	Width mm	Height mm
152752	piece	92	92	31,6
152753	piece	2a	113	31,6
152754	piece	3	135	39,6
152755	piece	160	160	49,6

Accessories NC power vices RBA

A37

Normal jaw finely checkered SGNf, reversible, to increase the specific contact pressure (higher holding forces), one side finely checkered, one side longitudinally grooved


Item no.	Contents of delivery	Size	Width mm	Height mm
163218	piece	92	92	31,6
156195	piece	2a	113	31,6
156196	piece	3	135	39,6
156197	piece	160	160	49,6

A37

V-jaw SPR, with vertically and horizontally ground-in prisms, hardened, for combination with SGN, only suitable for double clamping


Item no.	Contents of delivery	Size	Width mm	Height mm	Chucking capacity mm	
					Horizontal	Vertical
128770	piece	92	92	31,6	3-13	5-32
082362	piece	2a	113	31,6	3-13	5-32
082363	piece	125	135	39,6	4-20	6-40
082364	piece	160	160	49,6	5-29	7-48

A37

V-jaw and standard jaw SBO, unhardened and burnished, with workpiece support


Item no.	Contents of delivery	Size	Width mm	Height mm	Chucking capacity mm	
					Horizontal	Vertical
317259	set	2a	110	31,8	3-12	5-32
317260	set	125	135	39,8	3-13	6-40
317261	set	4	160	49,8	5-22	7-48

Accessories RBA

A37

Normal jaw SGNA, with movable workpiece stop, hardened and ground, only suitable for double clamping



Item no.	Contents of delivery	Size	Width mm	Height mm
150739	piece	2a	113	31,6
150740	piece	125	135	39,6
150741	piece	4	160	49,6

A37

Draw-down jaws STB, for parallel, angular or flat workpieces, hardened and ground



Item no.	Contents of delivery	Size	Width mm	Height mm
134826	set	2	110	32
134830	set	3	135	40
134834	set	4	160	50

A37

Floating jaws SRP, hardened and ground, for workpieces with/without angular and parallelism errors



Item no.	Contents of delivery	Size	Width mm	Height mm
077097	set	2	110	38
077098	set	3	135	46
077099	set	4	160	56

A37

Stepped top jaw ASB, for stationary jaw



Item no.	Contents of delivery	Size	Width mm	Height mm
153403	piece	2	113	19
153405	piece	3	135	22
153407	piece	4	160	25

A37

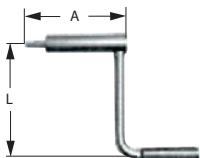
Stepped top jaw ASB, for movable jaw



Item no.	Contents of delivery	Size	Width mm	Height mm
153404	piece	2	113	19
153406	piece	3	135	22
153408	piece	4	160	25

A37

Hand crank, turnable handle, hexagon socket



Item no.	Contents of delivery	Size	Hexagon	A mm	L mm
134593	piece	1/2	12	48	80
134198	piece	92	12	60	90
134499	piece	4	12	117	90

Accessories NC power vices RBA

Accessories RBA

A37

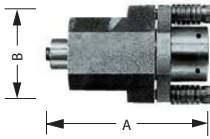
Angle drive, for screwing on the moving jaw (the moving jaw must be reworked), for actuating the vice spindle from above (90°)



Item no.	Contents of delivery	Size
142351	piece	1-4

A37

Hydraulic unit HDE



Item no.	Contents of delivery	Size	A mm	B mm
094170	piece	1	102	56
226502	piece	2	109	62
226503	piece	3	114	70
226504	piece	4	115	70

A37

Spindle, complete



Item no.	Contents of delivery	Size	L mm
134185	piece	1	91
134186	piece	2	99
134187	piece	3	116
134188	piece	4	151

A37

Single clamp SPE, for mounting vices on end and on the base.



Item no.	Contents of delivery	T-slot	Thread
149121	piece	12	M10x50
149122	piece	14	M12x55
149123	piece	16	M12x60
149124	piece	18	M16x60
155722	piece	20	M16x65
151507	piece	22	M16x65