



**APPLICATION**

For universal use on milling machines and machining centers.

**TYPE**

Clamping system mechanical without power transmitter, manually operated.

**CUSTOMER BENEFITS**

- ⊕ High precision thanks to precise jaw guides
- ⊕ Fast clamping range adjustment via bolt system
- ⊕ Optimal coolant and chip drain
- ⊕ High wear-resistance thanks to hardened jaw guides

**TECHNICAL FEATURES**

- Base with grooves for exact fixation on the machine table
- Use on rotary plate with graduation
- Set-up option with clamping claws
- Encapsulated spindle

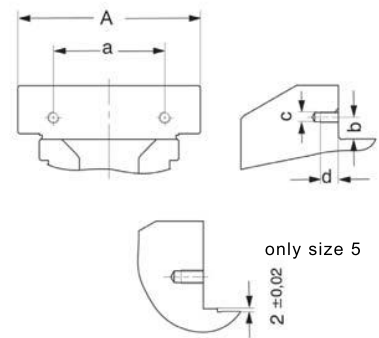
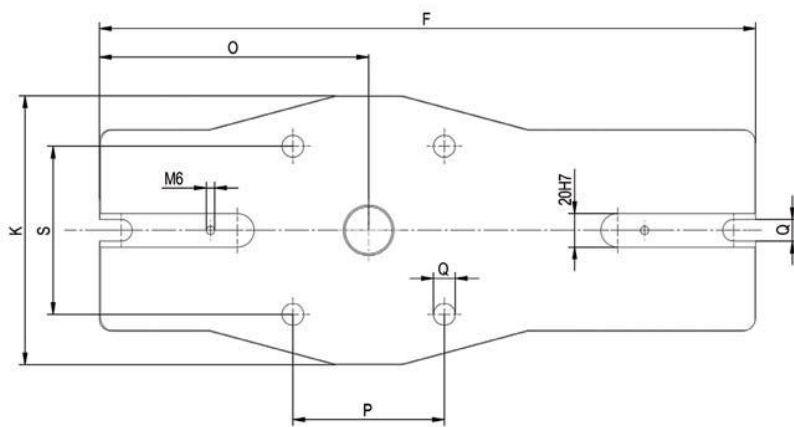
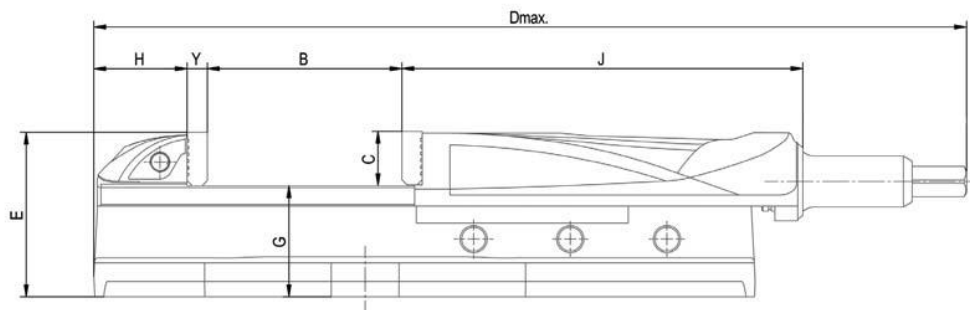
A10  
**RB-M**, with SGN normal jaws and hand crank

Item no.	179080	179081	179082	179083	179084
Size	1	2	3	4	5
Jaw width A mm	92	113	135	160	200
Clamping capacity B mm	100	185	240	330	370
C mm	31,6	31,6	39,6	49,6	66,6
D mm	420	586	686	860	1015
E mm	91	97	112	133	171
F mm	310	390	468	574	685
G±0,02 mm	59	65,5	72,5	83,5	104,5
H mm	50	55	70	80	90
J mm	218	236,5	262	298	375
K mm	160	160	200	240	280
O mm	115	160	180	220	230
P mm	90	90	90	90	160
Q mm	13	13	13	17	21
S mm	100	100	135	180	180
Y mm	12	12	16	16	20
a mm	63	63	80	100	140
b mm	13,6	13,5	15,6	19,6	23
c	M6	M6	M8	M8	M10
d mm	23	12	13	13	16
Clamping force kN	20	25	35	45	55
Weight kg	15,5	24	39	60	112

RB-M



Machine vices  
Orange Line



# Accessories RB-M

A37

**Draw-down jaws RNG**, with two permanent magnets



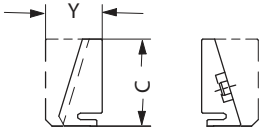
Item no.	Contents of delivery	Size	Width mm	Height mm
155237	set	1	92	32
155238	set	2	110	32
155239	set	3	135	40
155240	set	4	160	50
155241	set	5	200	67

A37

**Standard insert RNS**, held by two permanent magnets



Item no.	Contents of delivery	Size	Width mm	C mm	Y mm
155242	set	1	92	32	21
155243	set	2	110	32	21
155244	set	3	135	40	26
155245	set	4	160	50	30
155246	set	5	200	67	36



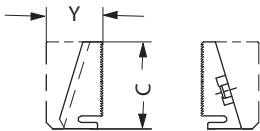
Machine vices  
Orange Line

A37

**Standard insert finely checkered RNSf**, held by two permanent magnets



Item no.	Contents of delivery	Size	Width mm	C mm	Y mm
163270	set	1	92	32	21
163271	set	2	110	32	21
163272	set	3	135	40	26
163273	set	4	160	50	30
163274	set	5	200	67	36

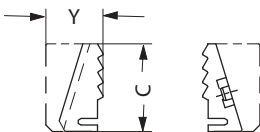


A37

**Claw insert RNK**, held by two permanent magnets



Item no.	Contents of delivery	Size	Width mm	C mm	Y mm
155247	set	1	92	32	21
155248	set	2	110	32	21
155249	set	3	135	40	26
155250	set	4	160	50	30
155251	set	5	200	67	36

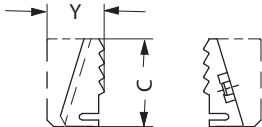


# Accessories RB-M

A37  
Insert with round clamping shoulder RNR, held by two permanent magnets



Item no.	Contents of delivery	Size	Width mm	C mm	Y mm
155252	set	1	92	32	21
155253	set	2	110	32	21
155254	set	3	135	40	26
155255	set	4	160	50	30
155256	set	5	200	67	36



A37  
Draw-down jaws STB, for parallel, angular or flat workpieces, hardened and ground



Item no.	Contents of delivery	Size	Width mm	Height mm
134826	set	2	110	32
134830	set	3	135	40
134834	set	4	160	50
134854	set	5	200	67

A37  
Floating jaws SRP, hardened and ground, for workpieces with/without angular and parallelism errors



Item no.	Contents of delivery	Size	Width mm	Height mm
077097	set	2	110	38
077098	set	3	135	46
077099	set	4	160	56
141791	set	5	200	68

A37  
Draw-down jaws SNF, with spring plate, hardened and ground



Item no.	Contents of delivery	Size	Width mm	Height mm
077104	set	2	113	31,6
077105	set	3	135	39,6
077106	set	4	160	49,6
141794	set	5	200	64,6

A37  
Normal jaw SGN, one side smooth, one side grooved, both sides ground



Item no.	Contents of delivery	Size	Width mm	Height mm
152752	piece	1	92	31,6
152753	piece	2	113	31,6
152754	piece	3	135	39,6
152755	piece	4	160	49,6
152756	piece	5	200	64,6

Machine vices  
Orange Line

# Accessories RB-M

A37

**Normal jaw finely checkered SGNf**, reversible, to increase the specific contact pressure (higher holding forces), one side finely checkered, one side longitudinally grooved



Item no.	Contents of delivery	Size	Width mm	Height mm
163218	piece	1	92	31,6
156195	piece	2	113	31,6
156196	piece	3	135	39,6
156197	piece	4	160	49,6
156199	piece	5	200	64,6

A37

**V-jaw SPR**, with vertically and horizontally ground-in prisms, hardened, for combination with SGN, only suitable for double clamping



Item no.	Contents of delivery	Size	Width mm	Height mm	Chuck capacity mm	
					Horizontal	Vertical
128770	piece	1	92	31,6	3-13	5-32
082362	piece	2	113	31,6	3-13	5-32
082363	piece	3	135	39,6	4-20	6-40
082364	piece	4	160	49,6	5-29	7-48
129734	piece	5	200	64,6	6-37	8-56

A37

**Normal jaw SGNA**, with movable workpiece stop, hardened and ground, only suitable for double clamping



Item no.	Contents of delivery	Size	Width mm	Height mm
150739	piece	2	113	31,6
150740	piece	3	135	39,6
150741	piece	4	160	49,6

Machine vices  
Orange Line

C15

**Hand crank HKU**, with octagon socket



Item no.	Contents of delivery	Size	Octagon	L
129658	piece	2/3	12	90
009150	piece	4/5	12	80

A37

**Standard rotation plate DP**, with fixing screws and T-slot nuts, ground contact edge, graduation



Item no.	Size	External Ø mm	Height	Center Ø	Weight
082441	2	242	30	28	7,5
082442	3	280	30	28	11
082443	4	340	34	28	18

A37

**Universal rotation plate DP**, with fixing screws and T-slot nuts, ground contact edge, graduation



Item no.	Size	External Ø mm	Height	Center Ø	Weight
090854	5	420	40	28	23