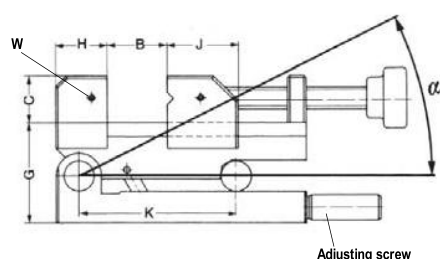
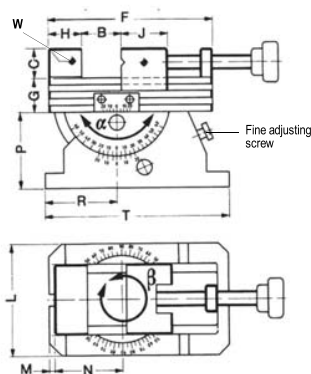


Grinding and inspection vice



A29
PS-SV, front swivelling axis

Item no.	Size	Squareness / 100 mm	Parallelism / 100 mm	Angular accuracy	Jaw width mm	B mm	Total height mm	C mm	Length body mm	G mm	H mm	J mm	K mm	α	W	Weight kg
370778	1	0,005	0,002	bei 45° ± 15"	70	80	93	30	160	63	33	45	100	0° - 46°	2xM5x15	5,3
370779	2	0,005	0,002	bei 45° ± 15"	90	120	113	40	210	73	40	50	150	0° - 46°	2xM5x15	11



A29
PS-ZD, 2-dimensional

Item no.	Size	Squareness/ 100 mm	Parallelism/ 100 mm	Jaw width mm	B mm	Total height mm	C mm	Length body mm	G mm	H mm	J mm	L mm	M mm	N mm	P mm	R mm	T mm	β	α	W	Weight kg
370782	1	0,005	0,002	70	80	137	30	160	32	33	45	110	5	65	75	70	180	360°	0° - 120°	2xM5x15	11,1
370783	2	0,005	0,002	120	150	210	40	270	50	55	70	160	10	105	120	105	270	360°	0° - 70°	2xM6x20	43

APPLICATION

Mainly in tool construction on grinding, milling and engraving machines, on jig boring machines, for measuring and control work and for production operations requiring high clamping precision.

CUSTOMER BENEFITS

- ② The clamping device can be positively locked in any angular position

TECHNICAL FEATURES

- Made of alloyed tool steel, hardened and very finely ground
- Bearing and support pins hardened and ground to a precision of 0.001 mm

APPLICATION

Mainly in tool construction on grinding, milling and engraving machines, on jig boring machines, for measuring and control work and for production operations requiring high clamping precision.

CUSTOMER BENEFITS

- ② 2-dimensional angle adjustment via vernia, for size 1 with 3' vernia, for size 2 with 5' vernia
- ② 360° turnable

TECHNICAL FEATURES

- Fine adjustment screw on bottom section makes exact angular adjustment possible
- Size 2 for heavy machining
- Positive locking in any desired angular position using fixing screws
- Made of alloyed tool steel, hardened and very finely ground