

# RKE-LV



## APPLICATION

Optimized for collision-free 5-axis machining in one set-up.  
Specially suited for 5-axis machines in combination with a base plate

## TYPE

Clamping system mechanical-mechanical with power transmitter, manually operated  
Short, compact design

## CUSTOMER BENEFITS

- ③ With tension clamping, zero point of the workpiece on the operator side
- ③ Large clamping range
- ③ High-precision positioning
- ③ Stable chip guard for longer life

## TECHNICAL FEATURES

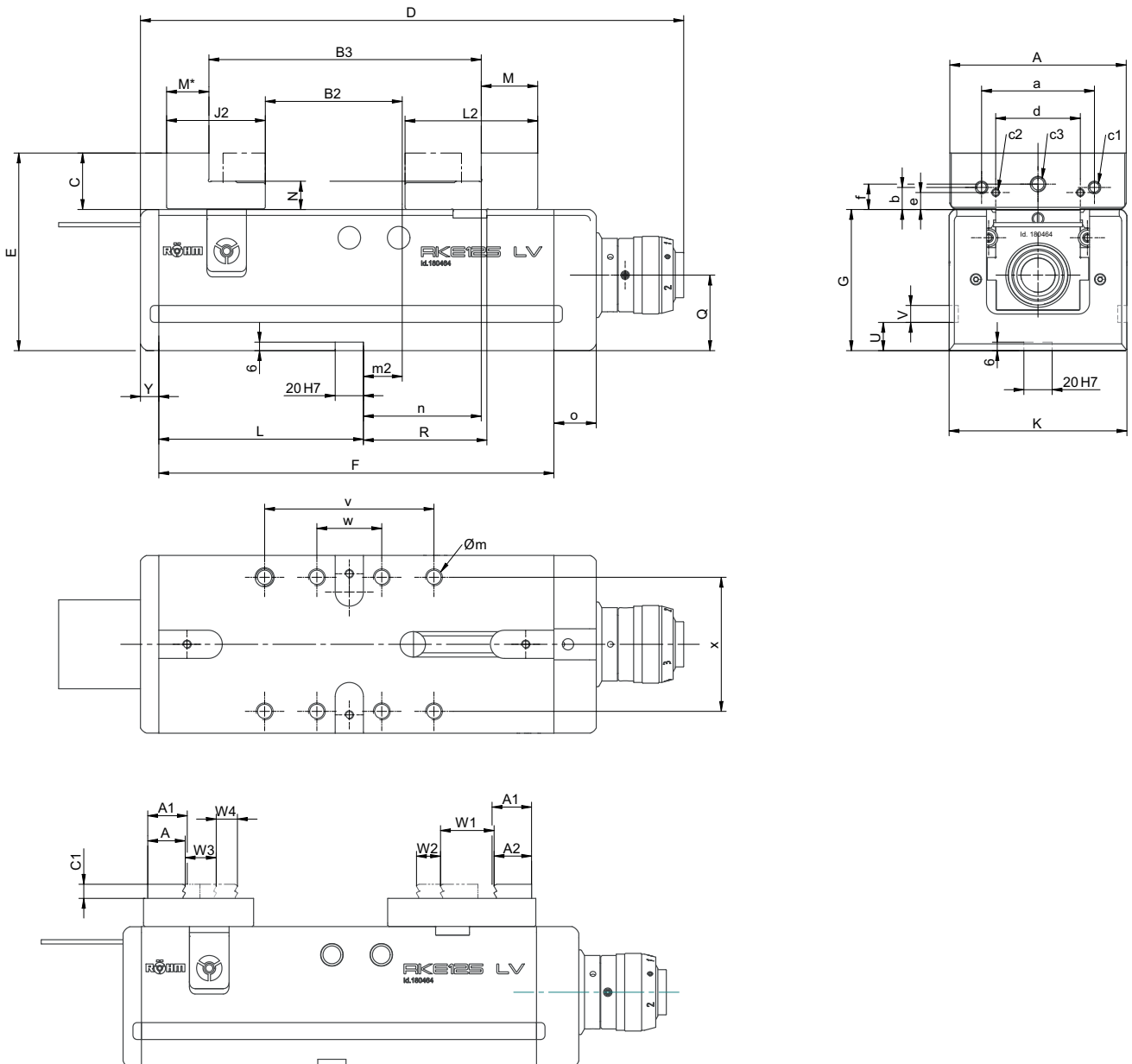
- Sturdy steel basic body and all guides are hardened and ground on all sides
- Compact design
- Carrier jaws, incl. swivelable claw inserts. For round and rectangular workpieces
- Clamping ranges carrier jaws:  
rightangular workpieces: 35 - 215 mm  
circular workpieces: 65 - 225 mm

A32

**RKE-LV**, with reversible stepped jaws or carrier jaws

Item no.	180464	180465
Jaw width A mm	125	125
Jaw design	stepped jaws	carrier jaws
B2 mm	0-96	35-215
B3 mm	96-192	65-225
C mm	40	20
D mm	385	385
E mm	140	130
F mm	280	280
G-0,02 mm	100	100
J2 mm	70	78
K mm	126	126
L mm	145	145
L2 mm	94	105
M mm	40	-
M* mm	30	-
N-0,01 mm	20	20
O mm	30	30
Q mm	53,5	53,5
R mm	87,5	87,5
U mm	20	20
V mm	40	40
Y mm	13	13
a mm	60	-
b mm	15,6	-
c1	M10	-
c2	M8	-
c3	M5	-
d mm	80	-
e mm	12	-
f mm	18	-
m2±0,02 mm	27,5	-
n±0,02 mm	83,5	-
o mm	30	30
v mm	120	120
w mm	46	46
x mm	95	95
Øm x depth	M12x20	M12x20
Clamping force kN	40	40
A1 mm	-	28
A2 mm	-	26,5
C1 mm	-	10
W1 mm	-	38
W2 mm	-	17
W3 mm	-	22
W4 mm	-	15
Weight kg	29	29

# RKE-LV

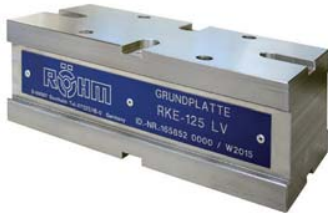


NC-Compact vices  
RKE-LV

# Accessories RKE-LV

A37  
Standard base plate GP

Item no.	Contents of delivery	Size	Length mm	Width mm	Height mm	Weight kg
165852	piece	125	280	126	90	24



A37  
Standard top jaws SA, reversible

Item no.	Contents of delivery	Size	Width mm	Height mm
162628	set	125	125	40



A37  
One-piece steel top jaws, for self-production of formed jaws, or for clamping formed parts

Item no.	Contents of delivery	Size	Width mm	Height mm
160352	set	125	125	60



A37  
Stepped jaws SB, reversible

Item no.	Contents of delivery	Size	Width mm	Height mm
178230	set	125	125	40



A37  
Double stepped jaws DSB, "smooth"

Item no.	Contents of delivery	Size	Width mm	Height mm
168693	set	125	62	60



A37  
Carrier jaws TB, without swivelling claw inserts

Item no.	Contents of delivery	Size	Width mm	Height mm
165856	set	125	125	20



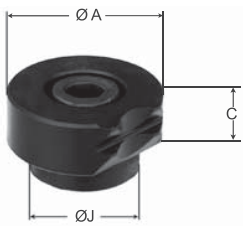
# Accessories RKE-LV

A37  
Carrier jaws, without claw inserts



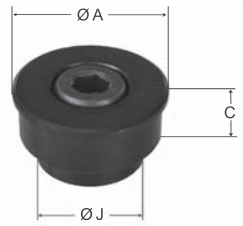
Item no.	Contents of delivery	Size	Width mm	Height mm
165861	set	125	160	20

A37  
Swivelling claw inserts, for carrier jaws 743-72



Item no.	Contents of delivery	Size	Ø A mm	Ø J mm	C mm
165854	piece	92/125	28	20	10

A37  
Tensioner for carrier jaws 743-72



Item no.	Contents of delivery	Size	Ø A mm	Ø J mm	C mm
169389	piece	92/125	28	20	10

A37  
Claw jaws with fine step, 2.5 mm clamping depth



Item no.	Contents of delivery	Size	Width mm	Height mm	Thickness mm
166520	set	160	125	40	16

A37  
Claw jaws without step, universal for clamping depth >2.5 mm



Item no.	Contents of delivery	Size	Width mm	Height mm	Thickness mm
166667	set	160	125	40	16

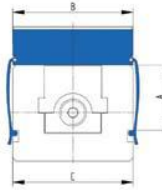
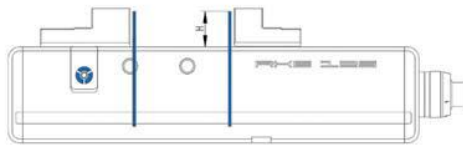
Accessories NC-Compact vices RKE-LV

# Accessories RKE-LV

A37

**Support rails Cliparc**, set with 10 different pairs of rails and 4 clamps in wooden box


Item no.	Web height A mm	Jaw width B mm	Rail height H	Guiding width C	Spare clamp (Set = 4 pieces)
1269622	68	125	10/15/20/25/28/30/33/35/36/37	126	1269625



A37

**Standard jaws SGN**, one side smooth, one side grooved, hardened and ground

Item no.	Contents of delivery	Size	Width mm	Height mm
158897	set	125	125	39,7



A37

**Standard jaws finely checkered SGNf**, reversible, to increase the specific contact pressure (higher holding forces), one side finely checkered, one side longitudinally grooved

Item no.	Contents of delivery	Size	Width mm	Height mm
163225	set	125	125	39,7



A37

**V-jaw SPR**, with vertically and horizontally ground-in prisms, hardened, for combination with SGN

Item no.	Contents of delivery	Size	Width mm	Height mm	Chucking capacity mm	
					Horizontal	Vertical
082363	piece	125	135	39,6	4-20	6-40



A37

**Normal jaw SGNA**, with movable workpiece stop, hardened and ground

Item no.	Contents of delivery	Size	Width mm	Height mm
150740	piece	125	135	39,6



A37

**Draw-down jaws SNF**, with spring plate, hardened and ground

Item no.	Contents of delivery	Size	Width mm	Height mm
077105	set	125	135	39,6



# Accessories RKE-LV

A37  
**V-jaw and standard jaw SBO**, unhardened and burnished, with workpiece support



Item no.	Contents of delivery	Size	Width mm	Height mm	Chucking capacity mm	
					Horizontal	Vertical
317260	set	125	135	39,8	3-13	6-40

A37  
**Hand crank**, turnable handle, hexagon socket



Item no.	Contents of delivery	Size	Hexagon	A mm	L mm
134600	piece	125/160/200	14	104	160

A37  
**90° Angle drive**



Item no.	Contents of delivery	Size	A mm	B mm	C mm
158339	piece	125	133	106	98

A37  
**Single clamp SPE**, for mounting vices on end and on the base.



Item no.	Contents of delivery	Size	T-slot	Thread
149121	piece		12	M10x50
149122	piece		14	M12x55
149123	piece		16	M12x60
149124	piece		18	M16x60
155722	piece		20	M16x65
151507	piece		22	M16x65

A37  
**Fixed slot nuts NTS**, hardened and ground, with fixing screw



Item no.	Contents of delivery	Size	Length mm
014823	set	20x12	22
014825	set	20x14	25
014827	set	20x16	25
014829	set	20x18	25
014831	set	20x20	22
014833	set	20x22	32

Accessories NC-Compact vices RKE-LV