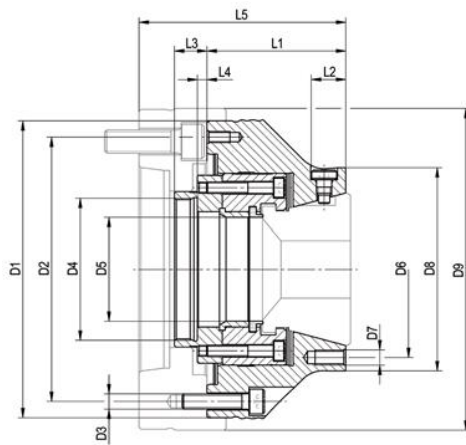


# CAPTIS-D



## APPLICATION

For use on lathes.  
Ideal for bars and pipe machining on the main spindle.

## TYPE

Force-actuated.  
With through-hole for bar and pipe machining.  
With axial tension.

## CUSTOMER BENEFITS

- ④ Maximum flexibility thanks to modular design and versatile combination and retrofitting options
- ④ Low weight and low height thanks to compact design for more work area in the machine
- ④ Short setup and non-productive times thanks to fast collect chuck change as well as great expansion of the collet chucks
- ④ Fast retrofitting from external to internal clamping thanks to optionally available segment clamping mandrel ABSIS-C

## TECHNICAL FEATURES

- Manual lubrication
- Collet chucks with exchangeable and oil-resistant vulcanized rubber

C 15  
CAPTIS-D collet chuck - with axial pull

Size	32	42	52	65	80	100	120
<b>Collet chucks</b>	<b>1283101</b>	<b>1283102</b>	<b>1283103</b>	<b>1283104</b>	<b>1283105 ▲</b>	<b>1283106 ▲</b>	<b>1283107 ▲</b>
D1 mm	137	137	155	155	215	215	250
D2 mm	100	118	138	138	190	190	215
D3	6x M8	6x M8	6x M8	6x M8	6x M12	6x M12	6x M12
D4 mm	M54x1,5	M54x1,5	M74x1,5	M74x1,5	M94x1,5	M120x1,5	M132x1,5
D5 mm	34	44	54	68	82	102	122
D6 mm	70	92	92	110	132	190	225
D7	3x M8	3x M8	3x M8	3x M8	3x M10	3x M12	3x M12
D8 mm	84	106	106	122	152	215	250
L1 mm	70,5	69	72,5	78	85	102	102
L2 mm	18	18	18	26	19	-	-
L3 mm	17	17	17	17	20	20	20
L4 min	1,5	1,5	1,5	1,5	-0,5	-0,5	-0,5
L4 max	7,5	7,5	7,5	7,5	5,5	5,5	5,5
Total stroke mm	6	6	6	6	6	6	6
Maximum draw bar pull kN	25	35	40	45	50	65	70
Total clamping force kN	60	70	80	90	100	130	140
Speed max, min <sup>-1</sup>	8000	7000	6500	6000	5500	5000	4000
Chucking capacity mm	4-32	4-42	4-52	4-65	5-80	42-100	62-120
<b>Clamping device manual</b>	<b>1283285</b>	<b>1283286</b>	<b>1283287</b>	<b>1283288</b>	-	-	-
<b>Clamping device air operated</b>	<b>431955 ▲</b>	<b>6898 ▲</b>	<b>436285 ▲</b>	<b>6898 ▲</b>	<b>1124 ▲</b>	<b>6352 ▲</b>	<b>6901 ▲</b>
<b>Conversion kit to CAPTIS-A</b>	<b>1283256</b>	<b>1283257</b>	<b>1283258</b>	<b>1283259</b>	<b>1283260</b>	<b>1283261</b>	<b>1283262</b>
<b>Turning fixture for soft collets</b>	<b>1316901 ▲</b>	<b>1316902 ▲</b>	<b>1316903 ▲</b>	<b>1316904 ▲</b>	<b>1316905 ▲</b>	<b>1316906 ▲</b>	<b>1316907 ▲</b>

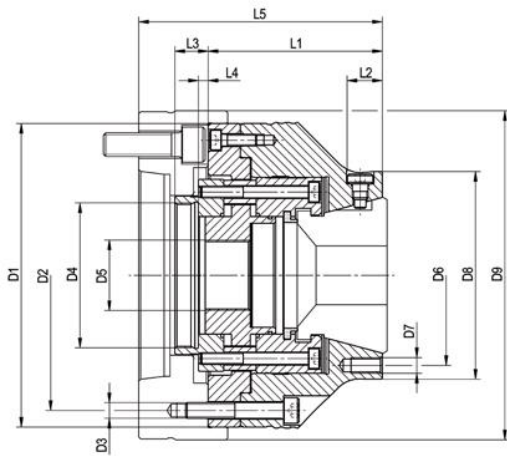
Intermediate flange ISO 702-1 (DIN 55028)

Size	32-A5	/42-A5	32-A6	42-A6	52-A5	65-A5	52-A6	65-A6	52-A8	65-A8	80-A6	100-A6	80-A8	100-A8	120-A8	120-A11
<b>Intermediate flange</b>	<b>1283194</b>		<b>1283195</b>		<b>1283198</b>		<b>1283199</b>		<b>1283200</b>		<b>1283203 ▲</b>		<b>1283204 ▲</b>		<b>1283207 ▲</b>	<b>1283209 ▲</b>
D9	150		165		168		168		210		230		230		270	280
L5	105	103,5	106	104,5	108,5	114	108	113,5	114,5	120	132	149	125	142	157	142

Intermediate flange cylindrical centre mount

Size	32-Z140	42-Z140	52-Z140	65-Z140	52-Z170	65-Z170	80-Z170	100-Z170	80-Z220	100-Z220	120-Z220
<b>Intermediate flange</b>	<b>1283196</b>		<b>1283201</b>		<b>1283202</b>		<b>1283205 ▲</b>		<b>1283206 ▲</b>		<b>1283208 ▲</b>
D9	150		168		180		230		230		270
L5	90	88,5	100	105,5	95	100,5	132	149	125	142	157

# CAPTIS-A



## APPLICATION

External clamping of round workpieces, as well as square and hexagon profiles. Turning, milling, grinding operations as well as for measuring. Ideal for machining insertion parts on the main spindle.

## TYPE

Force-actuated. Optional through-hole for bar machining by removing the internal workpiece stop. With axial tension against workpiece stop.

## CUSTOMER BENEFITS

- ⊕ Maximum flexibility thanks to modular design and versatile combination and retrofitting options
- ⊕ Low weight and low height thanks to compact design for more work area in the machine
- ⊕ Short setup and non-productive times thanks to fast collect chuck change as well as great expansion of the collet chucks
- ⊕ Fast retrofitting from external to internal clamping thanks to optionally available segment clamping mandrel ABSIS-C
- ⊕ Sturdy clamping of the workpiece thanks to axial tension against the workpiece stop
- ⊕ Prepared for internal workpiece stop and front stop

## TECHNICAL FEATURES

- Manual lubrication
- Collet chucks with exchangeable and oil-resistant vulcanized rubber

C 15  
CAPTIS-A collet chuck - with axial tension against workpiece stop

Size	32	42	52	65	80	100	120
Collet chucks	1283108	1283109	1283110	1283111	1283112 ▲	1283113 ▲	1283114 ▲
D1 mm	137	137	155	155	215	215	250
D2 mm	100	118	138	138	190	190	225
D3	6x M8	6x M8	6x M8	6x M8	6x M12	6x M12	6x M12
D4 mm	M54x1,5	M54x1,5	M74x1,5	M74x1,5	M94x1,5	M120x1,5	M132x1,5
D 5 mm	M22x1,5	M30x1,5	M36x1,5	M50x1,5	M55x1,5	M85x1,5	M105x1,5
D 6 mm	70	92	92	110	132	190	225
D7	3x M8	3x M8	3x M8	3x M8	3x M10	3xM12	3x M12
D8 mm	84	106	106	122	152	215	250
L1 mm	84	82,5	89	94,5	103	122	122
L2 mm	18	18	18	26	19	-	-
L3 mm	17	17	17	17	20	20	20
L4 min mm	1,5	1,5	1,5	1,5	-0,5	-0,5	-0,5
L4 max mm	7,5	7,5	7,5	7,5	5,5	5,5	5,5
Total stroke mm	6	6	6	6	6	6	6
Maximum draw bar pull kN	25	35	40	45	50	65	70
Total clamping force kN	60	70	80	90	100	130	140
Speed max, min <sup>-1</sup>	8000	7000	6500	6000	5500	5000	4000
Chucking capacity mm	4-32	4-42	4-52	4-65	5-80	42-100	62-120
Clamping device manual	1283285	1283286	1283287	1283288	-	-	-
Clamping device air operated	431955 ▲	6898 ▲	436285 ▲	6898 ▲	1124 ▲	6352 ▲	6901 ▲
Conversion kit to CAPTIS-A	1283249	1283250	1283251	1283252	1283253	1283254	1283255
Turning fixture for soft collets	1316901 ▲	1316902 ▲	1316903 ▲	1316904 ▲	1316905 ▲	1316906 ▲	1316907 ▲

Intermediate flange ISO 702-1 (DIN 55028)

Size	32-A5	42-A5	32-A6	42-A6	52-A5	65-A5	52-A6	65-A6	52-A8	65-A8	80-A6	100-A6	80-A8	100-A8	120-A8	120-A11
Intermediate flange	1283194	1283195	1283198	1283199	1283200	1283203 ▲	1283204 ▲	1283207 ▲	1283209 ▲							
D9	150	165	168	168	210	230	230	270	280							
L5	118,5	117	119,5	118	125	130,5	124,5	130	131	136,5	150	169	143	162	177	162

Intermediate flange cylindrical centre mount

Size	32-Z140	42-Z140	52-Z140	65-Z140	52-Z170	65-Z170	80-Z170	100-Z170	80-Z220	100-Z220	120-Z220
Intermediate flange	1283196	1283201	1283202	1283205	1283206 ▲	1283208 ▲					
D9	150	168	180	230	230	270					
L5	103,5	102	116,5	122	111,5	117	150	169	143	162	177

▲ on request

# CAPTIS-AF



## APPLICATION

External clamping of round workpieces, as well as square and hexagon profiles. Turning, milling, grinding operations as well as for measuring. Ideal for machining insertion parts on the main spindle.

## TYPE

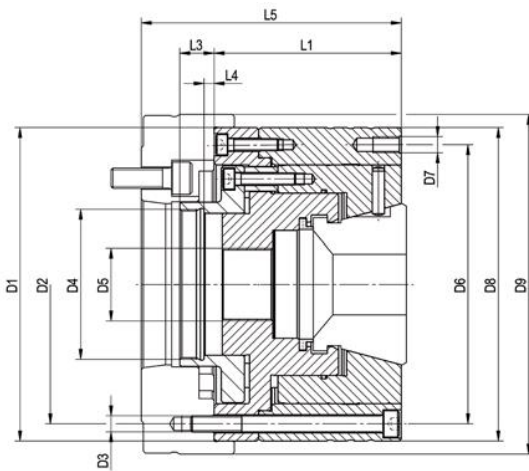
Force-actuated. Optional through-hole for bar machining by removing the internal workpiece stop. Axially stationary collect chuck, no axial tension against internal workpiece stop.

## CUSTOMER BENEFITS

- ④ Maximum flexibility thanks to modular design and versatile combination and retrofitting options
- ④ Low weight and low height thanks to compact design for more work area in the machine
- ④ Short setup and non-productive times thanks to fast collect chuck change as well as great expansion of the collet chucks
- ④ No damage, impressions on workpieces due to axially stationary collect chuck
- ④ Prepared for internal workpiece stop and front stop

## TECHNICAL FEATURES

- Manual lubrication
- Collet chucks with exchangeable and oil-resistant vulcanized rubber



C 15

**CAPTIS-AF collet chuck** - axially stationary collect chuck, no axial tension against internal workpiece stop

Size	32	42	52	65	80	100	120
<b>Collet chucks</b>	<b>1285001</b>	<b>1285002</b>	<b>1285003</b>	<b>1285004</b>	<b>1285005 ▲</b>	<b>1285006 ▲</b>	<b>1285007 ▲</b>
D1 mm	137	137	155	155	215	215	250
D2 mm	120	120	138	138	190	190	225
D3	6x M8	6x M8	6x M8	6x M8	6x M12	6x M12	6x M12
D4 mm	M48x1,5	M54x1,5	M74x1,5	M74x1,5	M120x1,5	M120x1,5	M132x1,5
D5 mm	M22x1,5	M30x1,5	M36x1,5	M50x1,5	M65x1,5	M85x1,5	M105x1,5
D 6 mm	94	120	138	138	190	190	225
D7	3x M6	3x M8	3x M8	3x M8	3x M8	3x M8	3x M8
D8 mm	105	137	155	155	215	215	250
L1 mm	80,5	81	92,5	92,5	102	102	122
L2 mm	34,7	-	-	-	-	-	-
L3 mm	15,5	16	17	17	18,5	18,5	18,5
L4 min mm	-4	-2,5	2,5	2,5	-1	-1	-1
L4 max mm	2	3,5	8,5	8,5	5	5	5
Total stroke mm	6	6	6	6	6	6	6
Maximum draw bar pull kN	25	35	40	45	50	65	70
Total clamping force kN	60	70	80	90	100	130	140
Speed max, min-1	8000	7000	6500	6000	5500	5000	4000
Chucking capacity mm	4-32	4-42	4-52	4-65	5-80	42-100	62-120
<b>Clamping device manual</b>	<b>1283285</b>	<b>1283286</b>	<b>1283287</b>	<b>1283288</b>	-	-	-
<b>Clamping device air operated</b>	<b>431955 ▲</b>	<b>6898 ▲</b>	<b>436285 ▲</b>	<b>6898 ▲</b>	<b>1124 ▲</b>	<b>6352 ▲</b>	<b>6901 ▲</b>
<b>Turning fixture for soft collets</b>	<b>1316901 ▲</b>	<b>1316902 ▲</b>	<b>1316903 ▲</b>	<b>1316904 ▲</b>	<b>1316905 ▲</b>	<b>1316906 ▲</b>	<b>1316907 ▲</b>

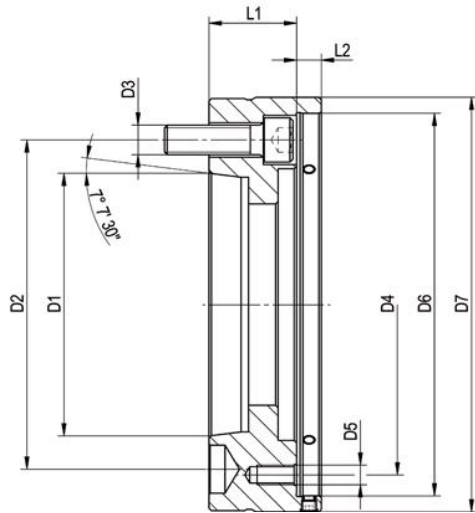
Intermediate flange ISO 702-1 (DIN 55028)

Size	32-A5	/42-A5	32-A6	42-A6	52-A5	65-A5	52-A6	65-A6	52-A8	65-A8	80-A6	100-A6	80-A8	100-A8	120-A8	120-A11
<b>Intermediate flange</b>	<b>1283194</b>		<b>1283195</b>		<b>1283198</b>		<b>1283199</b>		<b>1283200</b>		<b>1283203 ▲</b>		<b>1283204 ▲</b>		<b>1283207 ▲</b>	<b>1283209 ▲</b>
D9	150		165		168		168		210		230		230		270	280
L5	115	115,5	116	116,5	128,5	128,5	128	128	134,5	134,5	149	149	142	142	177	162

Intermediate flange cylindrical centre mount

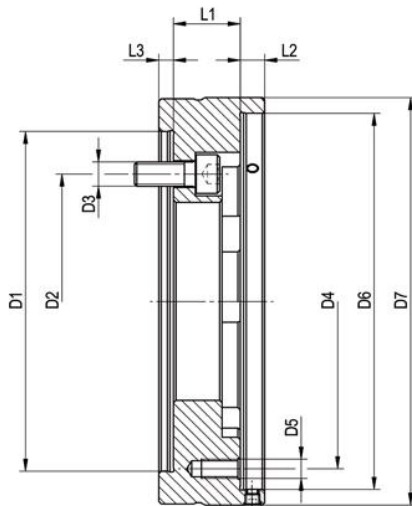
Size	32-Z140	42-Z140	52-Z140	65-Z140	52-Z170	65-Z170	80-Z170	100-Z170	80-Z220	100-Z220	120-Z220
<b>Intermediate flange</b>	<b>1283196</b>		<b>1283201</b>		<b>1283202</b>		<b>1283205 ▲</b>		<b>1283206 ▲</b>		<b>1283208 ▲</b>
D9	150		168		180		230		230		270
L5	100	100,5	120	120	115	115	149	149	142	142	177

# CAPTIS intermediate flange



Intermediate flange ISO 702-1 (DIN 55028) with adjusting screw

Size	32/42-A5	32/42-A6	52/65-A5	52/65-A6	52/65-A8	80/100-A6	80/100-A8	120-A8	120-A11
Intermediate flange	1283194	1283195	1283198	1283199	1283200	1283203 ▲	1283204 ▲	1283207	1283209
D1 mm	82,563	106,375	82,563	106,375	139,719	106,375	139,719	139,719	196,869
D2 mm	104,8	133,4	104,8	133,4	171,4	133,4	171,4	171,4	235
D3	6x M10	3x M12	6x M10	3x M12	3x M16	6x M12	3x M16	6x M16	3x M20
D4 mm	100/120	100/120	138	138	138	190	190	225	225
D5	6x M8	6x M8	6x M8	6x M8	6x M8	6x M12	6x M12	6x M12	6x M12
D6	137	137	155	155	155	215	215	250	250
D7 mm	150	165	168	168	210	230	230	270	280
L1 mm	34,5	35,5	36	35,5	42	47	40	55	40
L2 mm	10	10	10	10	10	10	10	12	12

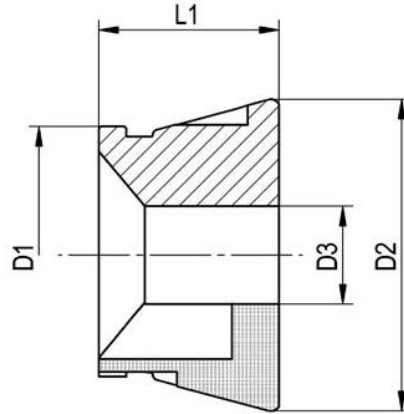


Intermediate flange cylindrical centre mount with adjusting screw

Size	32/42-Z140	52/65-Z140	52/65-Z170	80/100-Z170	80/100-Z220	120-Z220
Intermediate flange	1283196	1283201	1283202	1283205 ▲	1283206 ▲	1283208
D1 mm	140	140	170	170	220	220
D2 mm	104,8	104,8	133,4	133,4	171,4	171,4
D3	6x M10	6x M10	6x M12	6x M12	6x M16	6x M16
D4 mm	100/120	138	138	190	190	225
D5	6x M8	6x M8	6x M8	6x M12	6x M12	6x M12
D6	137	155	155	215	215	250
D7 mm	150	168	180	230	230	270
L1 mm	19,5	27,5	22,5	47	40	55
L2 mm	10	10	10	10	10	12
L3 mm	6	6	6	6	6	6

▲ on request

# CAPTIS collet chucks



(G): Smooth  
 (LQ): Longitudinal and transverse grooves  
 (Q): Transverse grooves  
 (W): Soft

from 4-7 mm smooth  
 from 8-10 mm with trans. grooves  
 caused by production

\* Please specify clamping diameters D3 in the order, valid for collet chucks type LQ + Q

**Clamping of unmachined parts with extension**

Size	D1	D2	L1	LQ	Q	G	W	Round	Hexagon	Square	Raising	Order No.
32	46,2	57,7	47	X				8-32mm			1	CAPTIS-32-47-RLQ / D3*
32	46,2	57,7	47		X				7-27mm		1	CAPTIS-32-47-SQ / D3*
32	46,2	57,7	47		X					7-22mm	1	CAPTIS-32-47-VQ / D3*

**Clamping of unmachined parts without extension**

Size	D1	D2	L1	LQ	Q	G	W	Round	Hexagon	Square	Raising	Order No.
32	46,2	57,7	44			X		4-32mm			1	CAPTIS-32-44-RG / D3*
32	46,2	57,7	44				X	5,15,20mm			1	CAPTIS-32-44-WG / D3*

**Clamping of unmachined parts with extension**

Size	D1	D2	L1	LQ	Q	G	W	Round	Hexagon	Square	Raising	Order No.
42	54	79,5	47	X				8-42mm			0,5	CAPTIS-42-47-RLQ / D3*
42	54	79,5	47		X				7-36mm		1	CAPTIS-42-47-SQ / D3*
42	54	79,5	47		X					7-30mm	1	CAPTIS-42-47-VQ / D3*

**Clamping of machined parts without extension**

Size	D1	D2	L1	LQ	Q	G	W	Round	Hexagon	Square	Raising	Order No.
42	54	79,5	42			X		4-42mm			0,5	CAPTIS-42-42-RG / D3*
42	54	79,5	42				X	8,15,30mm			0,5	CAPTIS-42-42-WG / D3*

**Clamping of unmachined parts with extension**

Size	D1	D2	L1	LQ	Q	G	W	Round	Hexagon	Square	Raising	Order No.
52	65,7	79,5	46	X				8-52mm			0,5	CAPTIS-52-46-RLQ / D3*
52	65,7	79,5	46		X				7-45mm		1	CAPTIS-52-46-SQ / D3*
52	65,7	79,5	46		X					8-36mm	1	CAPTIS-52-46-VQ / D3*

**Clamping of machined parts without extension**

Size	D1	D2	L1	LQ	Q	G	W	Round	Hexagon	Square	Raising	Order No.
52	65,7	79,5	46			X		4-52mm			0,5	CAPTIS-52-46-RG / D3*
52	65,7	79,5	46				X	8,15,30mm			0,5	CAPTIS-52-46-WG / D3*

CAPTIS Collet chucks

# CAPTIS collet chucks

(G): Smooth  
 (LQ): Longitudinal and transverse grooves  
 (Q): Transverse grooves  
 (W): Soft

from 4-7 mm smooth  
 from 8-10 mm with trans. grooves  
 caused by production

\* Please specify clamping diameters D3 in the order, valid for collet chucks type LQ + Q

### Clamping of unmachined parts with extension

Size	D1	D2	L1	LQ	Q	G	W	Round	Hexagon	Square	Raising	Order No.
65	80	99,5	58	X				8-65mm			0,5	CAPTIS-65-58-RLQ / D3*
65	80	99,5	58		X				7-56mm		1	CAPTIS-65-58-SQ / D3*
65	80	99,5	58		X					7-46mm	1	CAPTIS-65-58-VQ / D3*

### Clamping of machined parts without extension

Size	D1	D2	L1	LQ	Q	G	W	Round	Hexagon	Square	Raising	Order No.
65	80	99,5	53			X		8-65mm			0,5	CAPTIS-65-53-RG / D3*
65	80	99,5	53				X	8,20,40mm			0,5	CAPTIS-65-53-WG / D3*

### Clamping of unmachined parts with extension

Size	D1	D2	L1	LQ	Q	G	W	Round	Hexagon	Square	Raising	Order No.
80	94,5	114,5	53	X				8-80mm			1	CAPTIS-80-53-RLQ / D3*
80	94,5	114,5	53		X				7-68mm		1	CAPTIS-80-53-SQ / D3*
80	94,5	114,5	53		X					8-42mm	1	CAPTIS-80-53-VQ / D3*

### Clamping of machined parts without extension

Size	D1	D2	L1	LQ	Q	G	W	Round	Hexagon	Square	Raising	Order No.
80	94,5	114,5	53			X		5-80mm			1	CAPTIS-80-53-RG / D3*
80	94,5	114,5	53				X	20,30,40,60mm			1	CAPTIS-80-53-WG / D3*

### Clamping of unmachined parts with extension

Size	D1	D2	L1	LQ	Q	G	W	Round	Hexagon	Square	Raising	Order No.
100	121	144,5	59	X				42-100mm			1	CAPTIS-100-59-RLQ / D3*
100	121	144,5	59		X				50-86mm		1	CAPTIS-100-59-SQ / D3*
100	121	144,5	59		X					50-70mm	1	CAPTIS-100-59-VQ / D3*

### Clamping of machined parts without extension

Size	D1	D2	L1	LQ	Q	G	W	Round	Hexagon	Square	Raising	Order No.
100	121	144,5	59			X		42-100mm			1	CAPTIS-100-59-RG / D3*
100	121	144,5	59				X	30,45,65,90mm			1	CAPTIS-100-59-WG / D3*

### Clamping of unmachined parts with extension

Size	D1	D2	L1	LQ	Q	G	W	Round	Hexagon	Square	Raising	Order No.
120	141,8	180	61	X				62-120mm			1	CAPTIS-120-61-RLQ / D3*
120	141,8	180	61		X				50-104mm		1	CAPTIS-120-61-SQ / D3*
120	141,8	180	61		X					50-85mm	1	CAPTIS-120-61-VQ / D3*

### Clamping of machined parts without extension

Size	D1	D2	L1	LQ	Q	G	W	Round	Hexagon	Square	Raising	Order No.
120	141,8	180	61			X		62-120mm			1	CAPTIS-120-61-RG / D3*
120	141,8	180	61				X	65,90,110mm			1	CAPTIS-120-61-WG / D3*

# CAPTIS-MS



## APPLICATION

Manual/stationary external clamping of round workpieces, as well as square and hexagon profiles. Turning, milling, grinding operations as well as for measuring. Ideal for 5-sided machining.

## TYPE

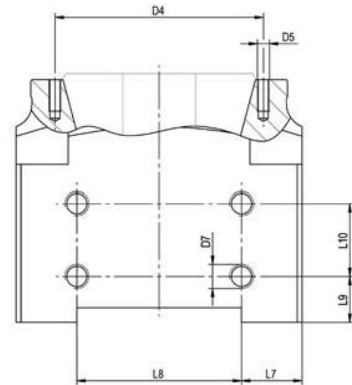
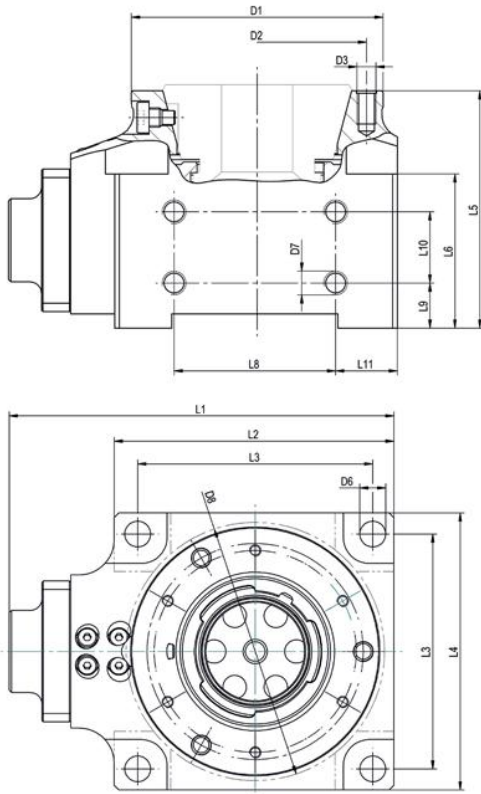
Manually actuated.  
With axial tension against workpiece stop (as an option).

## CUSTOMER BENEFITS

- ④ Maximum flexibility thanks to modular design and versatile combination and retrofitting options
- ④ Low weight and low height thanks to compact design for more work area in the machine
- ④ Short setup and non-productive times thanks to fast collect chuck change as well as great expansion of the collet chucks
- ④ Maximum clamping stroke/expansion by 180° rotation of the actuation key
- ④ Prepared for internal workpiece stop and front stop
- ④ Sturdy clamping of the workpiece thanks to axial tension against the workpiece stop
- ④ Sensitive manual clamping with actuation key

## TECHNICAL FEATURES

- Collet chucks with exchangeable and oil-resistant vulcanized rubber



C 15  
CAPTIS-MS stationary power chuck

Size	32	42	52	65
Stationary power chucks	1284189	1284190	1284191	1284192
D1 mm	84	106	106	122
D2 mm	70	92	92	110
D3	M8	M8	M8	M8
D4 mm	66	86	86	107
D5	M5	M5	M5	M5
D6	11	11	11	11
L1 mm	145	162	162	176
L2 mm	105	117,5	117,5	130
L3 mm	80	100	100	112
L4 mm	100	118	118	130
L5	100	100	100	104
L6 mm	65	65	65	57