

MZE



APPLICATION

Internal clamping of round workpieces, measuring operations, light grinding operations.
Ideal for long clamping lengths / long workpieces.

TYPE

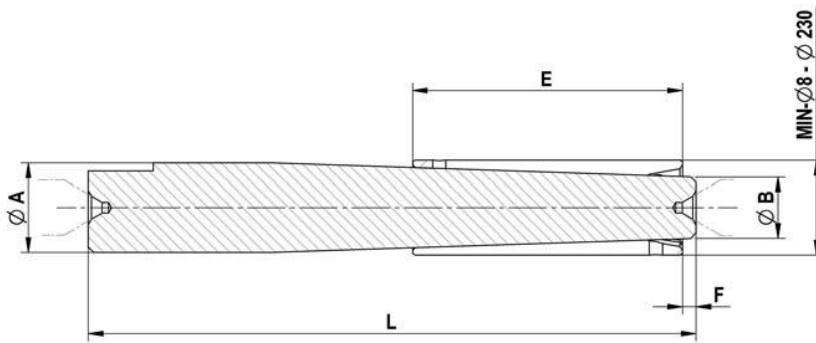
Manually actuated.
Available as clamping mandrel assortment for various clamping diameters.
Clamping sleeve separately available.

CUSTOMER BENEFITS

- ⊕ Quick change of clamping sleeve without tools
- ⊕ High concentricity and repeatability
- ⊕ High flexibility thanks to mount on the shaft or between points
- ⊕ Short retrofitting times

TECHNICAL FEATURES

- Hardened, low-wear design

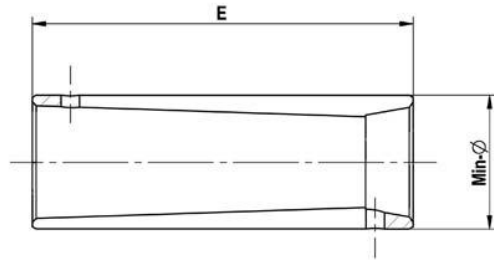


C18

MZE basic mandrel, hand-operated with centre hole, for internal clamping

	MZE 00	MZE 01	MZE 02	MZE 03	MZE 04	MZE 05	MZE 06	MZE 07	MZE 08	MZE 09	MZE 10	MZE 11	MZE 12	MZE 13	MZE 14	MZE 15
Basic mandrel	315000	315001	315002	315003	315004	315005	315006	315007	315008	315009	315010	315011	315012	315013 ▲	315014 ▲	315015 ▲
Min-Ø unclamped from	8	10	12	14	16	19	22	25	35	45	55	68	80	105	135	185
Min-Ø unclamped to	9	11	13	15	18	21	24	34	44	54	65	80	100	135	180	230
Clamping-Ø max,	10,5	12,5	15	17	20	23	26	37	47	59	70	85	105	140	185	235
Ø A	8	10	12	14	16	19	21	25	33	45	53	64	76	99	124	145,5
Ø B	4,1	5,3	5,7	6,9	8,5	10,7	12,2	14,6	22,6	31,1	38	48,2	60,9	80,4	97,4	122,4
E	40	45	60	70	70	80	80	100	100	125	135	150	150	170	180	200
F	3	3	4	4	4	4	4	4	5	5	5	5	5	5	82	63
L	75	110	125	140	150	170	175	225	225	300	330	350	350	400	442	443

Accessories MZE



C 18

Clamping sleeve Type E - for basic mandrel MZE

For size	MZE 00	MZE 01	MZE 02	MZE 03	MZE 04	MZE 05	MZE 06	MZE 07	MZE 08	MZE 09	MZE 10	MZE 11	MZE 12	MZE 13	MZE 14	MZE 15
Expansion in Ø mm	1,5	1,5	2	2	2	2	2	3	3	5	5	5	5	5	5	5
Total length E mm	40	45	60	70	70	80	80	100	100	125	135	150	150	170	180	200
Min-Ø mm	8	10	12	14	16	19	22	25	35	45	55	68	100	105	135	185
Clamping sleeve	315016	315017	315018	315019	315020	315021	315022	315023	315024	315025	315026	315027	315074	315029	315030	315031
Min-Ø mm	9	11	13	15	17	20	23	26	36	48	58	70	80	110	140	190
Clamping sleeve	315032	315033	315034	315035	315036	315037	315038	315039	315040	315041	315042	315043	315028	315045	315046	315047
Min-Ø mm					18	21	24	28	38	50	60	72	85	115	145	195
Clamping sleeve					315048	315049	315050	315051	315052	315053	315054	315055	315044	315057	315058	315059
Min-Ø mm								30	40	52	62	75	90	120	150	200
Clamping sleeve								315060	315061	315062	315063	315064	315056	315066	315067	315068
Min-Ø mm								32	42	54	65	78	95	125	155	205
Clamping sleeve								315069	315070	315071	315072	315073	315065	315075	315076	315077
Min-Ø mm								34	44			80		130	160	210
Clamping sleeve								315078	315079			315080		315081	315082	315083
Min-Ø mm														135	165	215
Clamping sleeve														315084	315085	315086
Min-Ø mm															170	220
Clamping sleeve															315087	315088
Min-Ø mm															175	225
Clamping sleeve															315089	315090
Min-Ø mm															180	230
Clamping sleeve															315091	315092

Deviating clamping Ø as well as profiled and vulcanized clamping sleeves available on request