



APPLICATION

Internal clamping of round workpieces. Turning, milling, grinding and tothing operations, as well as for balancing and measuring. Ideal for very small clamping diameters starting from Ø 5.5 mm or small workpieces.

TYPE

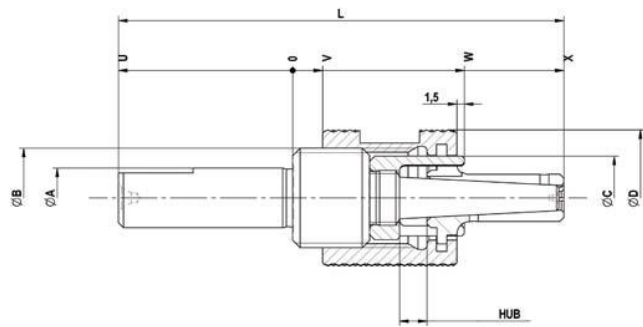
Manually actuated.
Clamping sleeves optionally vulcanized.

CUSTOMER BENEFITS

- ③ Sturdy clamping of the workpiece thanks to axial tension against the workpiece stop
- ③ High concentricity and repeatability
- ③ Light weight and reduced height thanks to compact design

TECHNICAL FEATURES

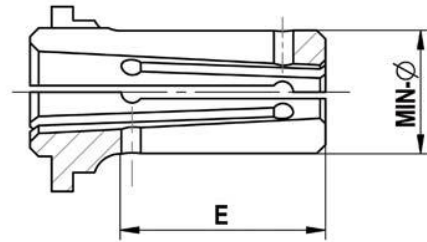
- Hardened, low-wear design



C18
MZB cartridge mandrel, hand-operated with centre hole, for internal clamping

| | MZB 00 | MZB 01 | MZB 02 | MZB 03 | MZB 04 | MZB 05 | MZB 06 | MZB 07 | MZB 08 | MZB 09 | MZB 10 | MZB 11 | MZB 12 |
|----------------------|---------|---------|---------|---------|---------|---------|---------|-----------|-----------|-----------|-----------|-----------|-----------|
| Cartridge Mandrel | 1130361 | 1130362 | 1130363 | 1130364 | 1130365 | 1130366 | 1130367 | 1130368 ▲ | 1130369 ▲ | 1130370 ▲ | 1130371 ▲ | 1130372 ▲ | 1130373 ▲ |
| Basic mandrel | 315100 | 315101 | 315102 | 315103 | 315104 | 315105 | 315106 | 315107 ▲ | 315108 ▲ | 315109 ▲ | 315110 ▲ | 315111 ▲ | 315112 ▲ |
| Nut | 315113 | 315114 | 315115 | 315116 | 315117 | 315118 | 315119 | 315120 ▲ | 315121 ▲ | 315122 ▲ | 315123 ▲ | 315124 ▲ | 315125 ▲ |
| Min-Ø unclamped from | 5,5 | 7,5 | 9,5 | 12 | 14,5 | 19,5 | 24,7 | 29,7 | 34,7 | 39,7 | 44,7 | 54,7 | 64,7 |
| Min-Ø unclamped to | 7 | 9 | 11,5 | 14,5 | 19 | 24,5 | 28,7 | 33,7 | 38,7 | 43,7 | 53,7 | 63,7 | 78,7 |
| Clamping-Ø max, | 7,5 | 9,5 | 12 | 15 | 19,5 | 25 | 29,7 | 34,7 | 39,7 | 44,7 | 54,7 | 64,7 | 79,7 |
| Ø A h6 | 10 | 12 | 12 | 14 | 18 | 20 | 25 | 30 | 40 | 40 | 45 | 50 | 50 |
| Ø B | M14x1,5 | M16x1,5 | M20x1,5 | M24x1,5 | M30x1,5 | M36x1,5 | M42x1,5 | M45x1,5 | M52x1,5 | M56x1,5 | M65x1,5 | M75x2 | M95x2 |
| Ø C mm | 10,8 | 13 | 16,8 | 20,8 | 26,8 | 31,8 | 36,8 | 41,8 | 47,8 | 52,5 | 61,8 | 71,8 | 90,8 |
| Ø D mm | 19,5 | 23 | 28 | 31 | 38 | 47 | 54 | 57,5 | 66 | 74 | 83 | 93 | 108 |
| Stroke G | 5 | 5,5 | 5,5 | 5,5 | 5,5 | 6 | 6 | 6 | 6 | 6 | 6 | 6,5 | 7 |
| L mm | 74,5 | 79,5 | 89,5 | 97,5 | 102,5 | 113,5 | 136 | 144,5 | 156 | 166,5 | 197 | 208,5 | 221,5 |
| U mm | 30 | 30 | 35 | 35 | 35 | 40 | 45 | 50 | 55 | 60 | 67 | 67 | 67 |
| V mm | 5,5 | 6 | 6 | 6 | 6 | 6 | 7 | 7 | 7 | 7 | 7 | 7 | 7 |
| W mm | 29 | 33,5 | 34,5 | 36,5 | 37,5 | 37,5 | 48,5 | 48,5 | 48,5 | 48,5 | 53,5 | 56,5 | 58,5 |
| X mm | 44,5 | 48,5 | 53,5 | 61,5 | 66,5 | 72,5 | 89 | 92,5 | 99 | 104,5 | 128 | 139,5 | 152,5 |

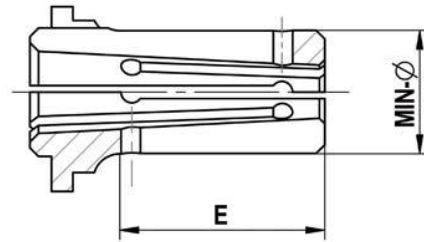
Accessories MZB



C 18
Clamping sleeve Type B - standard design (not vulcanized)

| For size | MZB 00 | MZB 01 | MZB 02 | MZB 03 | MZB 04 | MZB 05 | MZB 06 | MZB 07 | MZB 08 | MZB 09 | MZB 10 | MZB 11 | MZB 12 |
|-------------------|---------------|---------------|---------------|---------------|---------------|---------------|---------------|-----------------|-----------------|-----------------|-----------------|-----------------|-----------------|
| Expansion in Ø mm | 0,5 | 0,5 | 0,5 | 0,5 | 0,5 | 0,5 | 1 | 1 | 1 | 1 | 1 | 1 | 1 |
| Total length E mm | 11,5 | 15 | 19 | 20,5 | 28,5 | 34 | 40 | 43,5 | 50 | 55,5 | 74 | 82,5 | 93,5 |
| Min-Ø mm | 5,5 | 7,5 | 10 | 12 | 14,5 | 19,5 | 24,7 | 29,7 | 34,7 | 39,7 | 44,7 | 54,7 | 64,7 |
| Clamping sleeve | 315139 | 315140 | 315154 | 315142 | 315143 | 315144 | 315145 | 315146 | 315147 ▲ | 315148 ▲ | 315149 ▲ | 315150 ▲ | 315151 ▲ |
| Work stop | 315126 | 315127 | 315128 | 315129 ▲ | 315130 | 315131 | 315132 | 315133 ▲ | 315134 ▲ | 315135 ▲ | 315136 ▲ | 315137 ▲ | 315138 ▲ |
| Min-Ø mm | 6 | 8 | 10,5 | 12,5 | 15 | 20 | 25,7 | 30,7 | 35,7 | 40,7 | 45,7 | 55,7 | 65,7 |
| Clamping sleeve | 315152 | 315153 | 315167 | 315155 | 315156 | 315157 | 315158 | 315159 ▲ | 315160 ▲ | 315161 ▲ | 315162 ▲ | 315163 ▲ | 315164 ▲ |
| Work stop | 315126 | 315127 | 315128 | 315129 ▲ | 315130 | 315131 | 315132 | 315133 ▲ | 315134 ▲ | 315135 ▲ | 315136 ▲ | 315137 ▲ | 315138 ▲ |
| Min-Ø mm | 6,5 | 8,5 | 11 | 13 | 15,5 | 20,5 | 26,7 | 31,7 | 36,7 | 41,7 | 46,7 | 56,7 | 66,7 |
| Clamping sleeve | 315165 | 315166 | 315180 | 315168 | 315169 | 315170 | 315171 | 315172 ▲ | 315173 ▲ | 315174 ▲ | 315175 ▲ | 315176 ▲ | 315177 ▲ |
| Work stop | 315126 | 315127 | 315128 | 315129 ▲ | 315130 | 315131 | 315132 | 315133 ▲ | 315134 ▲ | 315135 ▲ | 315136 ▲ | 315137 ▲ | 315138 ▲ |
| Min-Ø mm | 7 | 9 | 11,5 | 13,5 | 16 | 21 | 27,7 | 32,7 | 37,7 | 42,7 | 47,7 | 57,7 | 67,7 |
| Clamping sleeve | 315178 | 315179 | 315191 | 315181 | 315182 | 315183 | 315184 | 315185 ▲ | 315186 ▲ | 315187 ▲ | 315188 ▲ | 315189 ▲ | 315190 ▲ |
| Work stop | 315126 | 315127 | 315128 | 315129 ▲ | 315130 | 315131 | 315132 | 315133 ▲ | 315134 ▲ | 315135 ▲ | 315136 ▲ | 315137 ▲ | 315138 ▲ |
| Min-Ø mm | | | 9,5 | 14 | 16,5 | 21,5 | 28,7 | 33,7 | 38,7 | 43,7 | 48,7 | 58,7 | 68,7 |
| Clamping sleeve | | | 315141 | 315192 | 315193 | 315194 | 315195 | 315196 ▲ | 315197 ▲ | 315198 ▲ | 315199 ▲ | 315200 ▲ | 315201 ▲ |
| Work stop | | | 315128 | 315129 ▲ | 315130 | 315131 | 315132 | 315133 ▲ | 315134 ▲ | 315135 ▲ | 315136 ▲ | 315137 ▲ | 315138 ▲ |
| Min-Ø mm | | | | 14,5 | 17 | 22 | | | | | 49,7 | 59,7 | 69,7 |
| Clamping sleeve | | | | 315202 | 315203 | 315204 | | | | | 315205 ▲ | 315206 ▲ | 315207 ▲ |
| Work stop | | | | 315129 ▲ | 315130 | 315131 | | | | | 315136 ▲ | 315137 ▲ | 315138 ▲ |
| Min-Ø mm | | | | | 17,5 | 22,5 | | | | | 50,7 | 60,7 | 70,7 |
| Clamping sleeve | | | | | 315209 | 315210 | | | | | 315211 ▲ | 315212 ▲ | 315213 ▲ |
| Work stop | | | | | 315130 | 315131 | | | | | 315136 ▲ | 315137 ▲ | 315138 ▲ |
| Min-Ø mm | | | | | 18 | 23 | | | | | 51,7 | 61,7 | 71,7 |
| Clamping sleeve | | | | | 315215 | 315216 | | | | | 315217 ▲ | 315218 ▲ | 315219 ▲ |
| Work stop | | | | | 315130 | 315131 | | | | | 315136 ▲ | 315137 ▲ | 315138 ▲ |
| Min-Ø mm | | | | | 18,5 | 23,5 | | | | | 52,7 | 62,7 | 72,7 |
| Clamping sleeve | | | | | 315221 | 315222 | | | | | 315223 ▲ | 315224 ▲ | 315225 ▲ |
| Work stop | | | | | 315130 | 315131 | | | | | 315136 ▲ | 315137 ▲ | 315138 ▲ |
| Min-Ø mm | | | | | 19 | 24 | | | | | 53,7 | 63,7 | 73,7 |
| Clamping sleeve | | | | | 315227 | 315228 | | | | | 315229 ▲ | 315230 ▲ | 315231 ▲ |
| Work stop | | | | | 315130 | 315131 | | | | | 315136 ▲ | 315137 ▲ | 315138 ▲ |
| Min-Ø mm | | | | | | 24,5 | | | | | | | 74,7 |
| Clamping sleeve | | | | | | 315233 | | | | | | | 315208 ▲ |
| Work stop | | | | | | 315131 | | | | | | | 315138 ▲ |
| Min-Ø mm | | | | | | | | | | | | | 75,7 |
| Clamping sleeve | | | | | | | | | | | | | 315214 ▲ |
| Work stop | | | | | | | | | | | | | 315138 ▲ |
| Min-Ø mm | | | | | | | | | | | | | 76,7 |
| Clamping sleeve | | | | | | | | | | | | | 315220 ▲ |
| Work stop | | | | | | | | | | | | | 315138 ▲ |
| Min-Ø mm | | | | | | | | | | | | | 77,7 |
| Clamping sleeve | | | | | | | | | | | | | 315226 ▲ |
| Work stop | | | | | | | | | | | | | 315138 ▲ |
| Min-Ø mm | | | | | | | | | | | | | 78,7 |
| Clamping sleeve | | | | | | | | | | | | | 315232 ▲ |
| Work stop | | | | | | | | | | | | | 315138 ▲ |

Accessories MZB



C 18

Clamping sleeve Type B - vulcanized (protected against chips and dirt)

| For size | MZB 00 | MZB 01 | MZB 02 | MZB 03 | MZB 04 | MZB 05 | MZB 06 | MZB 07 | MZB 08 | MZB 09 | MZB 10 | MZB 11 | MZB 12 |
|-------------------|---------------|---------------|---------------|---------------|---------------|---------------|---------------|-----------------|-----------------|-----------------|-----------------|-----------------|-----------------|
| Expansion in Ø mm | 0,5 | 0,5 | 0,5 | 0,5 | 0,5 | 0,5 | 1 | 1 | 1 | 1 | 1 | 1 | 1 |
| Total length E mm | 11,5 | 15 | 19 | 20,5 | 28,5 | 34 | 40 | 43,5 | 50 | 55,5 | 74 | 82,5 | 93,5 |
| Min-Ø mm | 5,5 | 7,5 | 10 | 12 | 14,5 | 19,5 | 24,7 | 29,7 | 34,7 | 39,7 | 44,7 | 54,7 | 64,7 |
| Clamping sleeve | 323739 | 323740 | 323754 | 323742 | 323743 | 323744 | 323745 | 323746 ▲ | 323747 ▲ | 323748 ▲ | 323749 ▲ | 323750 ▲ | 323751 ▲ |
| Work stop | 315126 | 315127 | 315128 | 315129 ▲ | 315130 | 315131 | 315132 | 315133 ▲ | 315134 ▲ | 315135 ▲ | 315136 ▲ | 315137 ▲ | 315138 ▲ |
| Min-Ø mm | 6 | 8 | 10,5 | 12,5 | 15 | 20 | 25,7 | 30,7 | 35,7 | 40,7 | 45,7 | 55,7 | 65,7 |
| Clamping sleeve | 323752 | 323753 | 323767 | 323755 | 323756 | 323757 | 323758 | 323759 ▲ | 323760 ▲ | 323761 ▲ | 323762 ▲ | 323763 ▲ | 323764 ▲ |
| Work stop | 315126 | 315127 | 315128 | 315129 ▲ | 315130 | 315131 | 315132 | 315133 ▲ | 315134 ▲ | 315135 ▲ | 315136 ▲ | 315137 ▲ | 315138 ▲ |
| Min-Ø mm | 6,5 | 8,5 | 11 | 13 | 15,5 | 20,5 | 26,7 | 31,7 | 36,7 | 41,7 | 46,7 | 56,7 | 66,7 |
| Clamping sleeve | 323765 | 323766 | 323780 | 323768 | 323769 | 323770 | 323771 | 323772 ▲ | 323773 ▲ | 323774 ▲ | 323775 ▲ | 323776 ▲ | 323777 ▲ |
| Work stop | 315126 | 315127 | 315128 | 315129 ▲ | 315130 | 315131 | 315132 | 315133 ▲ | 315134 ▲ | 315135 ▲ | 315136 ▲ | 315137 ▲ | 315138 ▲ |
| Min-Ø mm | 7 | 9 | 11,5 | 13,5 | 16 | 21 | 27,7 | 32,7 | 37,7 | 42,7 | 47,7 | 57,7 | 67,7 |
| Clamping sleeve | 323778 | 323779 | 323791 | 323781 | 323782 | 323783 | 323784 | 323785 ▲ | 323786 ▲ | 323787 ▲ | 323788 ▲ | 323789 ▲ | 323790 ▲ |
| Work stop | 315126 | 315127 | 315128 | 315129 ▲ | 315130 | 315131 | 315132 | 315133 ▲ | 315134 ▲ | 315135 ▲ | 315136 ▲ | 315137 ▲ | 315138 ▲ |
| Min-Ø mm | | | 9,5 | 14 | 16,5 | 21,5 | 28,7 | 33,7 | 38,7 | 43,7 | 48,7 | 58,7 | 68,7 |
| Clamping sleeve | | | 323741 | 323792 | 323793 | 323794 | 323795 | 323796 ▲ | 323797 ▲ | 323798 ▲ | 323799 ▲ | 323800 ▲ | 323801 ▲ |
| Work stop | | | 315128 | 315129 ▲ | 315130 | 315131 | 315132 | 315133 ▲ | 315134 ▲ | 315135 ▲ | 315136 ▲ | 315137 ▲ | 315138 ▲ |
| Min-Ø mm | | | | 14,5 | 17 | 22 | | | | | | 59,7 | 69,7 |
| Clamping sleeve | | | | 323802 | 323803 | 323804 | | | | | | 323805 ▲ | 323806 ▲ |
| Work stop | | | | 315129 ▲ | 315130 | 315131 | | | | | | 315136 ▲ | 315137 ▲ |
| Min-Ø mm | | | | | 17,5 | 22,5 | | | | | | 60,7 | 70,7 |
| Clamping sleeve | | | | | 323809 | 323810 | | | | | | 323811 ▲ | 323812 ▲ |
| Work stop | | | | | 315130 | 315131 | | | | | | 315136 ▲ | 315137 ▲ |
| Min-Ø mm | | | | | 18 | 23 | | | | | | 61,7 | 71,7 |
| Clamping sleeve | | | | | 323815 | 323816 | | | | | | 323817 ▲ | 323818 ▲ |
| Work stop | | | | | 315130 | 315131 | | | | | | 315136 ▲ | 315137 ▲ |
| Min-Ø mm | | | | | 18,5 | 23,5 | | | | | | 62,7 | 72,7 |
| Clamping sleeve | | | | | 323821 | 323822 | | | | | | 323823 ▲ | 323824 ▲ |
| Work stop | | | | | 315130 | 315131 | | | | | | 315136 ▲ | 315137 ▲ |
| Min-Ø mm | | | | | 19 | 24 | | | | | | 63,7 | 73,7 |
| Clamping sleeve | | | | | 323827 | 323828 | | | | | | 323829 ▲ | 323830 ▲ |
| Work stop | | | | | 315130 | 315131 | | | | | | 315136 ▲ | 315137 ▲ |
| Min-Ø mm | | | | | | 24,5 | | | | | | | 74,7 |
| Clamping sleeve | | | | | | 323833 | | | | | | | 323808 ▲ |
| Work stop | | | | | | 315131 | | | | | | | 315138 ▲ |
| Min-Ø mm | | | | | | | | | | | | | 75,7 |
| Clamping sleeve | | | | | | | | | | | | | 323814 ▲ |
| Work stop | | | | | | | | | | | | | 315138 ▲ |
| Min-Ø mm | | | | | | | | | | | | | 76,7 |
| Clamping sleeve | | | | | | | | | | | | | 323820 ▲ |
| Work stop | | | | | | | | | | | | | 315138 ▲ |
| Min-Ø mm | | | | | | | | | | | | | 77,7 |
| Clamping sleeve | | | | | | | | | | | | | 323826 ▲ |
| Work stop | | | | | | | | | | | | | 315138 ▲ |
| Min-Ø mm | | | | | | | | | | | | | 78,7 |
| Clamping sleeve | | | | | | | | | | | | | 323832 ▲ |
| Work stop | | | | | | | | | | | | | 315138 ▲ |

Deviating clamping Ø as well as profiled clamping sleeves available on request