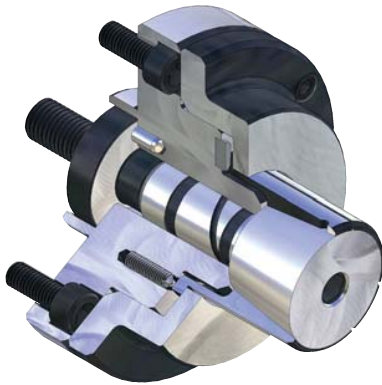


KFR - with axial tightening



APPLICATION

Internal clamping of round workpieces. Turning, grinding and tothing operations, as well as for balancing and measuring.
Ideal for short clamping lengths / workpieces.

TYPE

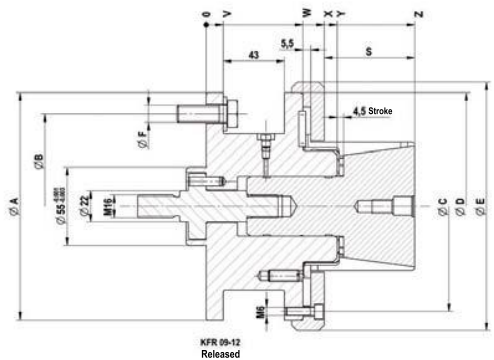
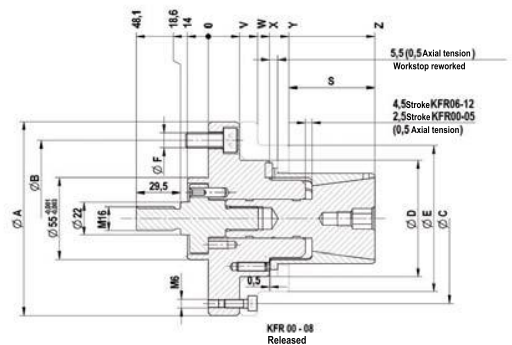
Force-actuated. Sleeve optional vulcanized.
Convertible to MFR (new intermediate piece required).

CUSTOMER BENEFITS

- ⊕ No workpiece tension thanks to def. axial tension against the workpiece stop
- ⊕ High concentricity, axial run-out and repeatability
- ⊕ Low-maintenance

TECHNICAL FEATURES

- Hardened, low-wear design
- Integrated lubrication
- Air sensing φ



C18
KFR cartridge mandrel, power-operated with flanged seat, for internal clamping
Consisting of basic body, clamping taper, intermediate piece, nut

	KFR 00	KFR 01	KFR 02	KFR 03	KFR 04	KFR 05	KFR 06	KFR 07	KFR 08	KFR 09	KFR 10	KFR 11	KFR 12
Cartridge Mandrel	1077600	1077601	1077602	1077603	1077604	1077605	1077606	1077607	1077608	1077609	1077610	1077611	1077612
Base bolt	1077620	1077621	1077622	1077623	1077624	1077625	1077626	1077627	1077627	1077628	1077628	1077628	1077628
Clamping taper	650340	650341	650342	650343	650344	650345	650346	650347	650348	650349	650350	650351	650352
Adapter power operated	1061892	1061919	1077615	1061921	1050020	1050020	1050021	1077619	1077619	1077619	1077619	1077619	1077619
Nut	893814	893814	893814										
F max, in kN	4,65	13,1	19,5	24,4	26,8	33	33	33	33	33	33	33	33
Max, total clamping force approx, kN	20	56	83	104	114	140	140	140	140	140	140	140	140
Min-Ø unclamped from	14,2	19,7	25,2	35,2	40,2	50,2	60,7	70,7	80,7	90,7	100,7	110,7	120,7
Min-Ø unclamped to	19,7	25,2	35,2	40,2	50,2	60,7	70,7	80,7	90,7	100,7	110,7	120,7	130,7
Clamping-Ø max,	20,2	25,7	35,7	40,7	50,7	61,3	71,7	81,7	91,7	101,7	111,7	121,7	131,7
External-Ø A	100	100	100	100	130	130	130	160	160	160	160	160	160
Pitch diameter B	75	75	75	75	105	105	105	130	130	130	130	130	130
Pitch diameter C	85	85	85	85	114	114	114	145	145	148	148	148	148
Ø D mm	50	50	50	50	78	78	78	100	100	160	160	160	160
Ø E mm	70	70	70	70	98	98	98	130	130	175	175	175	175
Ø F mm	M10	M10	M10	M10	M10	M10	M10	M12	M12	M12	M12	M12	M12
S mm	21,5	27,5	27,5	27,5	42,5	42,5	57,5	55,5	55,5	63,5	63,5	63,5	63,5
V mm	21	21	21	21	21	21	21	32	32	12	12	12	12
W mm	33	33	33	33	33	33	33	50	50	68	68	68	68
X mm	39	39	39	39	41	41	41	58	58	92	92	92	92
Y mm	50	52	52	52	54	54	54	73	73	83	83	83	83
Z mm	71,5	79,5	79,5	79,5	96,5	96,5	111,5	128,5	128,5	146,5	146,5	146,5	146,5

Max. clamping force: 1,9-5,5-8,3-10,4-11,4-14,0-14,0-14,0-14,0-14,0-14,0-14,0-14,0