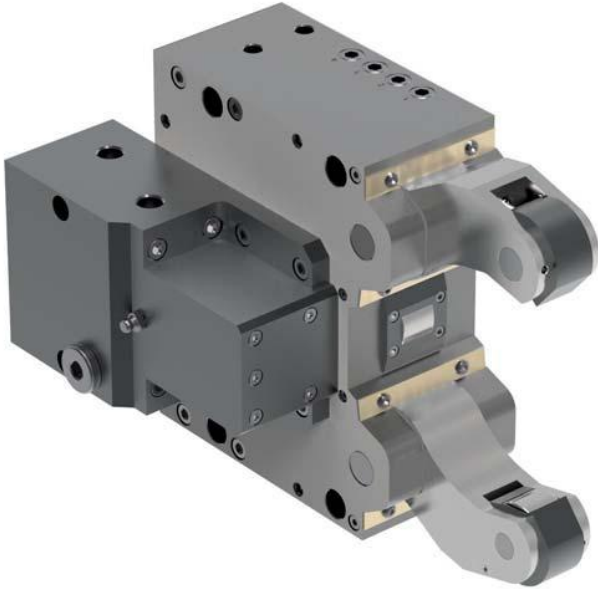


# SLZNB - with side mounted cylinder



### APPLICATION

Support of slender shafts for rational turning and end machining.

### TYPE

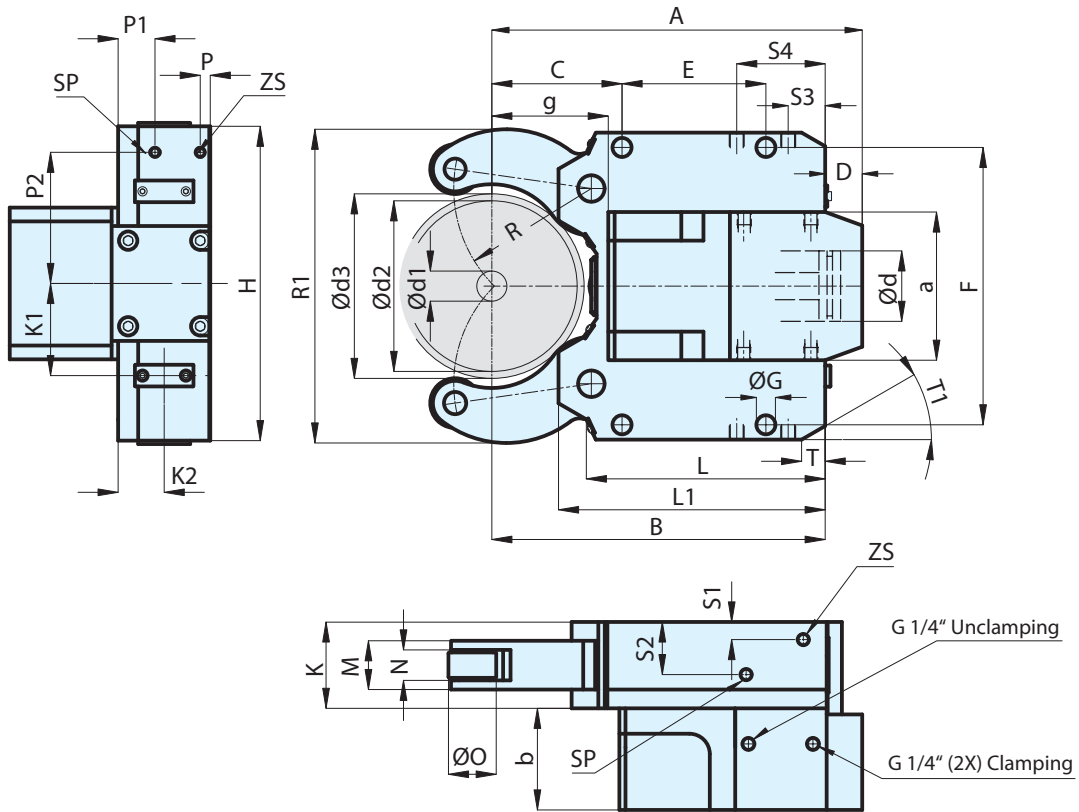
Standard version with cylinder mounted cylinder.

### CUSTOMER BENEFITS

- ⊕ Flexible use when less back-space available
- ⊕ Large clamping range without change elements
- ⊕ Operational safety thanks to safety valve, even if pressure drops
- ⊕ High centering precision and repeatability thanks to proven cam lever system
- ⊕ Resilient chip protection for optimal workpiece wiping (for version „with chip protection“)
- ⊕ Purge air connection to prevent penetration of dirt inside the steady rest

### TECHNICAL FEATURES

- Central lubrication or manual lubrication possible, depending on the operating conditions
- Standard version available with cylindrical or convex rollers
- Available with and without chip protection
- Prepared for end position check (limit switch not included in the scope of delivery)



# SLZNB - with side mounted cylinder

C 15

Self-centering steady rests SLZNB - oil or air operated, with side mounted cylinder

Clamping ranges type	SLZNB 08105	SLZNB 1152	SLZNB 1517	SLZNB 40200	SLZNB 325	SLZNB 50315	SLZNB 85350
Clamping range - with chip protection mm	16-101	22-140	25-158	40-195	40-240	50-305	85-345
Clamping range - without chip protection mm	8-105	11-152	15-170	40-200	30-250	50-315	85-350
Max. radial clamping range - d3 mm	105	161	170	200	250	320	350
With chip protectors RZ	<b>1685539 ▲</b>	<b>1685543 ▲</b>	<b>1685547 ▲</b>	<b>1685551 ▲</b>	<b>1685555 ▲</b>	<b>1685559 ▲</b>	<b>1685563 ▲</b>
With chip protectors RB	<b>1685540 ▲</b>	<b>1685544 ▲</b>	<b>1685548 ▲</b>	<b>1685552 ▲</b>	<b>1685556 ▲</b>	<b>1685560 ▲</b>	<b>1685564 ▲</b>
Without chip protectors RZ	<b>1685541 ▲</b>	<b>1685545 ▲</b>	<b>1685549 ▲</b>	<b>1685553 ▲</b>	<b>1685557 ▲</b>	<b>1685561 ▲</b>	<b>1685565 ▲</b>
Without chip protectors RB	<b>1685542 ▲</b>	<b>1685546 ▲</b>	<b>1685550 ▲</b>	<b>1685554 ▲</b>	<b>1685558 ▲</b>	<b>1685562 ▲</b>	<b>1685566 ▲</b>
d1 mm	8	11	15	40	30	50	85
d2 mm	105	152	170	200	250	315	350
d3 mm	105	161	170	200	250	320	350
A mm	228	341	349	368	483,5	574	594
B mm	197	306	314	333	448	510	530
C mm	70	115	123	138	146	178	198
D mm	31	35	35	35	35,5	64	64
E mm	85	135	135	135	240	270	270
F mm	170	262	262	262	365	400	400
G mm	14	18	18	18	23	23	23
H mm	190	290	290	290	400	440	440
K mm	75	85	85	85	110	145	145
L mm	146	223	223	223	328,5	353,5	353,5
L1 mm	164	251	251	251	361	394,5	394,5
Clamping arm width M mm	35	48	48	48	60	75	75
Roller width N mm	20,5/18	30/25	30/25	30/25	40/35	45/40	45/40
O mm	35	47	47	47	52	60	60
P mm	-	9,5	9,5	9,5	12,5	21,5	21,5
P1 mm	-	34	34	34	12,5	68,5	68,5
P2 mm	-	117,5	117,5	117,5	160	183	183
R mm	74,5	122	130	143,5	178,5	209	229
S1 mm	10	-	-	-	-	-	-
S2 mm	40	-	-	-	-	-	-
S3 mm	28	-	-	-	-	-	-
S4 mm	28	-	-	-	-	-	-
K1 mm	59,5	85	85	85	110	140	140
K2 mm	36,5	42,5	42,5	42,5	55	59,5	59,5
a mm	95	140	140	140	180	180	180
b mm	71	98	98	98	124	143	143
d mm	50	80	80	80	100	100	100
g mm	68	102	110	129	169	196	216
T mm	-	-	-	-	48	54,5/22	54,5/22
T1	-	-	-	-	30°	18°/40°	18°/40°
R1 mm	192	291	303	326	403	486	512
Weight kg	14,5	51	51	52	134	194	198
ZS	G 1/8"	G 1/8"	G 1/8"	G 1/8"	G 1/8"	G 1/8"	G 1/8"
SP	G 1/8"	G 1/8"	G 1/8"	G 1/8"	G 1/8"	G 1/8"	G 1/8"
Cylinder-Ø	C50	C80	C80	C80	C100	C100	C100
Cylinder surface area cm <sup>2</sup>	19,6	50	50	50	78,5	78,5	78,5
Max. operating pressure bar	53	62	68	40	57	80	61
Operating pressure bar	8-30	8-40	8-44	8-25	8-42	8-58	8-40
Clamping force per roller at max. operating pressure N	1960	6500	7000	4160	11000	15000	10460
Max. permissible clamping force per roller N	3500	10000	10000	6670	15000	20000	16000
Clamping force per roller at 20 bar N	1300	3300	3300	3300	5200	5200	5200
Centering accuracy over the entire clamping range mm	0,02 <sup>1</sup>	0,04 <sup>1</sup>	0,04 <sup>1</sup>	0,04 <sup>1</sup>	0,05 <sup>1</sup>	0,06 <sup>1</sup>	0,06 <sup>1</sup>
Repeat accuracy for the same clamping-Ø at the same operating pressure mm	0,005	0,005	0,005	0,005	0,01	0,01	0,01
Max. roller peripheral speed m/min	800	725	725	725	715	700	700
Max. roller peripheral speed at half the max. clamping force per roller m/min	950	875	875	875	860	850	850
Displacement of the geometrical workpiece center in the event of a 20-70% change in the operating pressure /at constant force) mm	0,02	0,03	0,03	0,03	0,03	0,03	0,03

<sup>1</sup> At constant pressure and clamping force

Self-centering steady rests SLZNB

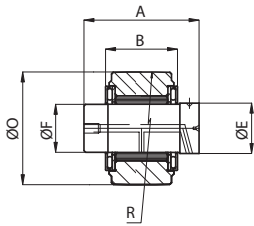
# Accessories SLZNB

## C 15 Cylindrical rollers

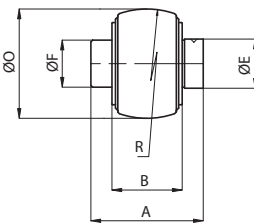


Item no.	For	A mm	B mm	Ø F mm	Ø O mm	Ø E mm	R mm
1835388	SLZN/SLZNB 08105	31	20,5	15	35	15	500
649513	SLZN/SLZNB 1152, SLZN/SLZNB 1517, SLZN/SLZNB 40200	48	30	20	47	21	1000
649514	SLZN/SLZNB 325	60	40	20	52	21	3000
381420	SLZN/SLZNB 50315, SLZN/SLZNB 85350	75	45	20,1	60	21	3000

Rollers SLZNB 08105 without axle



## C 15 Convex rollers

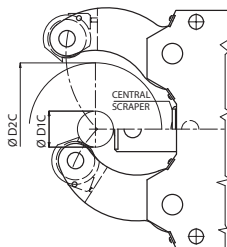


Item no.	For	A mm	B mm	Ø F mm	Ø O mm	Ø E mm	R mm
1835513	SLZN/SLZNB 08105	31	20,5	15	35	15	100
649515	SLZN/SLZNB 1152, SLZN/SLZNB 1517, SLZN/SLZNB 40200	48	30	20	47	21	100
649516	SLZN/SLZNB 325	60	40	20	52	21	100
381426	SLZN/SLZNB 50315, SLZN/SLZNB 85350	75	45	20,1	60	21	500

## C 15 Central scraper RZ

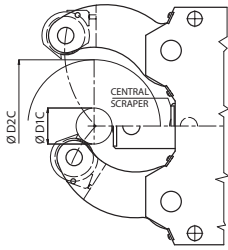


Item no.	For	Clamping ranges D1C mm	Clamping ranges D2C mm
1835391	SLZN/SLZNB 08105	16	101
1831222	SLZN/SLZNB 1152	22	140
1831134	SLZN/SLZNB 1517, SLZN/SLZNB 40200	25/40	158/195
735005	SLZN/SLZNB 325	40	240
836584	SLZN/SLZNB 50315, SLZN/SLZNB 85350	50/85	305/345



# Accessories SLZNB

C 15  
Central scraper RB



Item no.	For	Clamping ranges D1C mm	Clamping ranges D2C mm
1835606	SLZN/SLZNB 08105	16	101
1831220	SLZN/SLZNB 1152	22	140
1831282	SLZN/SLZNB 1517, SLZN/SLZNB 40200	25/40	158/195
1831403	SLZN/SLZNB 325	40	240
836820	SLZN 50315, SLZN 85360	50/85	305/345

C 15  
Chip protector outer Set = 2 Pieces



Item no.	For	Clamping ranges D1C mm	Clamping ranges D2C mm
836610	SLZN/SLZNB 08105	16	101
836611	SLZN/SLZNB 1152, SLZN/SLZNB 1517, SLZN/SLZNB 40200	22/25/40	140/158/195
836612	SLZN/SLZNB 325	40	240
836613	SLZN/SLZNB 50315, SLZN/SLZNB 85350	50/85	305/345

