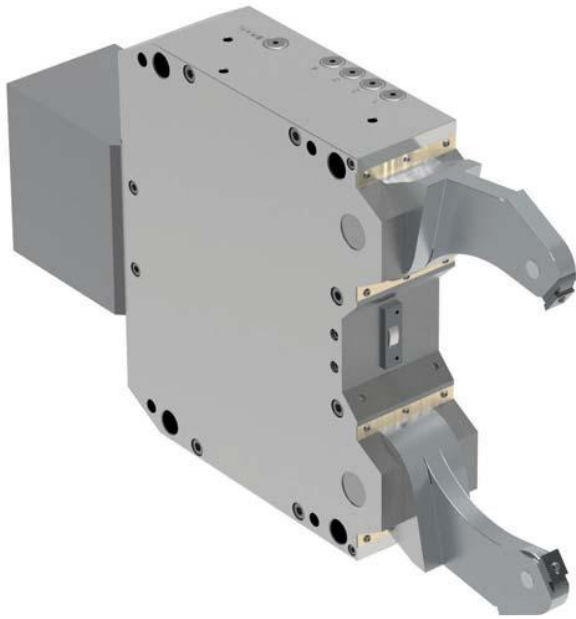


# SLZK - slim clamping arms



## APPLICATION

Support of slender shafts for rational turning and end machining optimal for crankshafts and cam shafts.

## TYPE

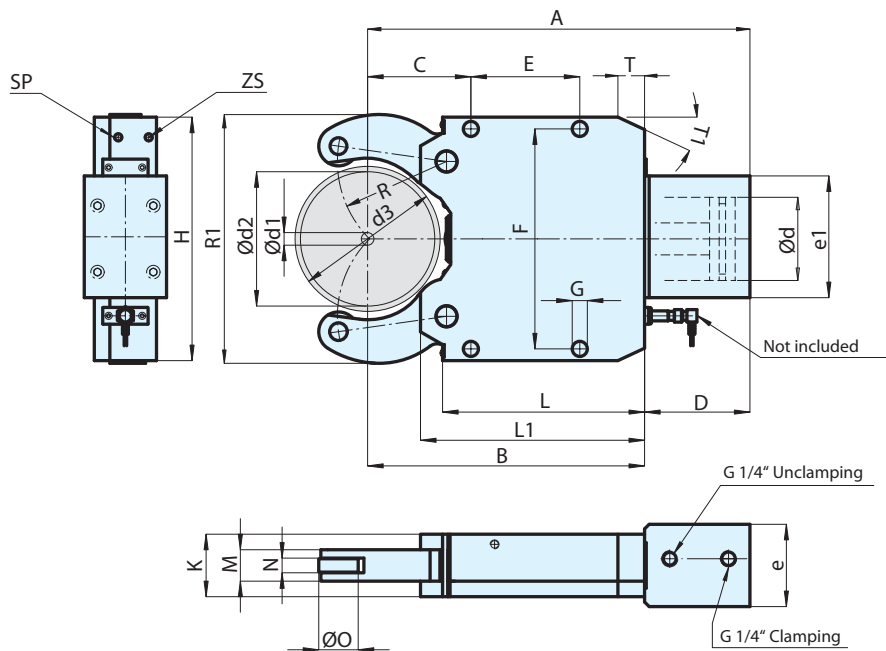
Version with extra slim clamping arms.

## CUSTOMER BENEFITS

- ⊕ Can be flexibly used thanks to support option in narrow in-between spaces
- ⊕ Large clamping range without change elements
- ⊕ Operational safety thanks to safety valve, even if pressure drops
- ⊕ Compact and sturdy design for variable use
- ⊕ High centering precision and repeatability thanks to proven cam lever system
- ⊕ Resilient chip protection for optimal workpiece wiping (for version „with chip protection“)
- ⊕ Purge air connection to prevent penetration of dirt inside the steady rest

## TECHNICAL FEATURES

- Central lubrication or manual lubrication possible, depending on the operating conditions
- Standard version available with cylindrical rollers
- Available with and without chip protection
- Prepared for end position check (limit switch not included in the scope of delivery)



# SLZK - slim clamping arms

C 15

**Self-centering steady rests SLZK** - oil or air operated, with slender clamping arms, for machining crankshafts

Clamping ranges type	SLZK 08101-15	SLZK 08101-19	SLZK 08101-22	SLZK 40200-18	SLZK 40200-22	SLZK 325-19	SLZK 325-22	SLZK 325-29
Clamping range - with chip protection mm	16-101	16-101	16-101	30-185	30-185	35-248	35-248	35-248
Clamping range - without chip protection mm	8-105	8-105	8-105	30-185	30-185	35-250	35-250	35-250
With chip protectors RZ	1685636 ▲	1685638 ▲	1685640 ▲	1685642 ▲	1685644 ▲	1685646 ▲	1685648 ▲	1685650 ▲
Without chip protectors RZ	1685637 ▲	1685639 ▲	1685641 ▲	1685643 ▲	1685645 ▲	1685647 ▲	1685649 ▲	1685651 ▲
d1 mm	8	8	8	30	30	35	35	35
d2 mm	105	105	105	185	185	250	250	250
d3 mm	106	106	106	190	190	254	254	254
Max. Ø opening range d4sw mm	113	113	113	200	200	263	263	263
A mm	279,5	279,5	279,5	458,5	458,5	617,5	617,5	617,5
B mm	197	197	197	333	333	451	451	451
C mm	70	70	70	138	138	146	146	146
D mm	82,5	82,5	82,5	125,5	125,5	166,5	166,5	166,5
E mm	85	85	85	135	135	240	240	240
F mm	170	170	170	262	262	365	365	365
G mm	14	14	14	18	18	23	23	23
H mm	190	190	190	290	290	400	400	400
K mm	50	50	50	85	85	110	110	110
L mm	143	143	143	223	223	331,5	331,5	331,5
L1 mm	164	164	164	251	251	364	364	364
Clamping arm width M mm	15	18	22	18	22	19	22	29
Roller width N mm	8	10	13	11	13	11	13	16
O mm	35	35	35	47	47	52	52	52
R mm	74,5	74,5	74,5	143,5	143,5	183	183	183
d mm	50	50	50	60	60	60	60	60
e mm	68	68	68	98	98	124	124	124
e1 mm	92	92	92	145	145	156	156	156
T mm	-	-	-	-	-	45	45	45
T1	-	-	-	-	-	30°	30°	30°
R1 mm	190	190	190	320	320	394	394	394
Weight kg	11,5	11,5	11,5	40	40	80	80	80
ZS	G 1/8"	G 1/8"	G 1/8"	G 1/8"	G 1/8"	G 1/8"	G 1/8"	G 1/8"
SP	G 1/8"	G 1/8"	G 1/8"	G 1/8"	G 1/8"	G 1/8"	G 1/8"	G 1/8"
Operating pressure bar	8-32	8-40	8-50	8-60	8-75	8-70	8-80	8-80
Max. permissible clamping force per roller N	2100	2700	3350	5600	7000	6600	7500	7500
Centering accuracy over the entire clamping range mm	0,03*	0,03*	0,03*	0,05*	0,05*	0,06*	0,06*	0,06*
Repeat accuracy mm	0,007*	0,007*	0,007*	0,007*	0,007*	0,01*	0,01*	0,01*
Max. roller peripheral speed m/min	750	750	750	715	715	700	700	700

\*) At constant pressure and clamping force