

KFD-G



APPLICATION

Power chuck without through-hole for clamping workpieces with collars or shoulders (e.g. fittings), without having to give up high clamping force.

TYPE

Power chuck is available with cylindrical center mount. 2-jaw version with serration 90° (sizes 125 + 160 with tongue and groove).

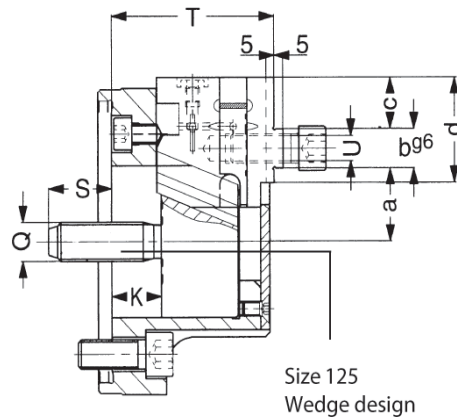
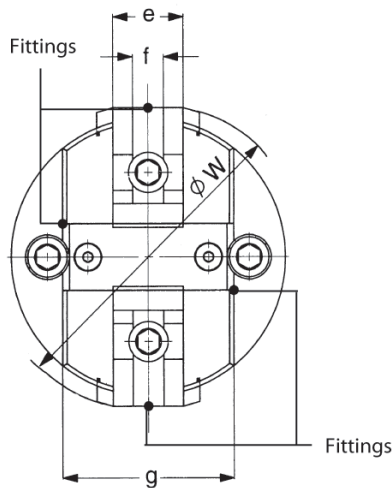
CUSTOMER BENEFITS

- ③ Minimization of the interference contours of the chuck by means of bevels on the chuck body
- ③ Excessively high jaw stroke for flexible chuck use
- ③ Long service life - Sealed against dirt and water
- ③ High clamping precision thanks to proven wedge hook system

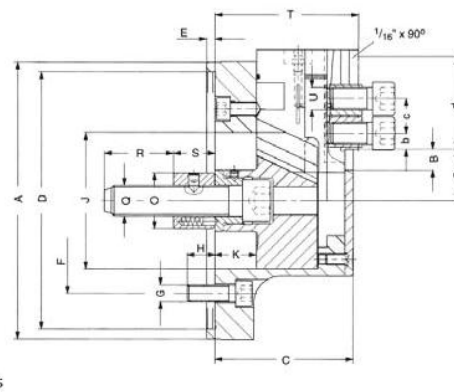
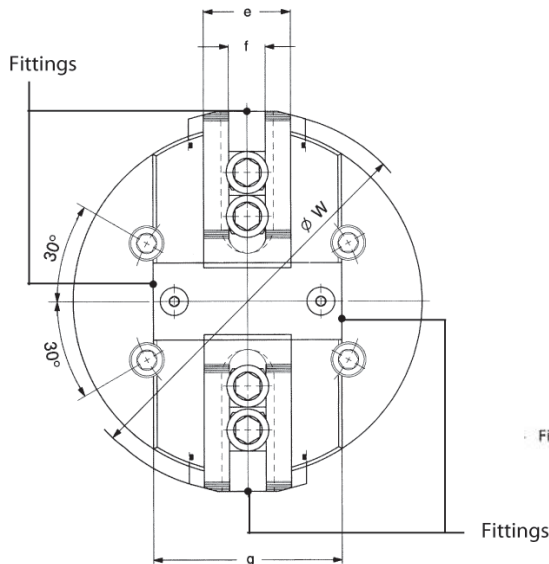
TECHNICAL FEATURES

- Power transmission by means of wedge hook system
- Direct lubrication of base jaws and pistons (4 lubrication points)
- Full steel design

Size 125 + 160
Tongue and groove



Size 125
Wedge design



Fittings

Fittings

KFD-G 2-jaw, large jaw movement, serration 90°

C15

2-jaw power chuck KFD-G, with large jaw movement,

Adaptor recess for clamping workpieces with collars or shoulders (e.g. fittings), without having to give up high clamping force.

Item no.	154025	154026	154027	154028	154029
Size	125	160	200	250	315
A mm	125	160	200	250	315
Jaw travel B mm	8,5	11	14	14,4	14,4
C mm	70	81	100	102	102
Mount DH6	115	140	185	220	220
E mm	6	6	6	6	6
F mm	92	104,8	133,4	171,4	171,4
G mm	2 x M 12	4 x M 10	4 x M 12	4 x M 16	4 x M 16
H mm	15	16	20	25	25
J mm	62	75	98	98	98
Wedge stroke K mm	22	27	30	31	31
O mm	-	35	44	44	44
Q mm	M 16	M 16	M 22	M 22	M 22
R mm	-	40	50	50	50
S min.	28	33	30	29	29
S max.	50	60	60	60	60
T±0,05 mm	72	84	103,7	105,7	105,7
U	M 12	M 16	M 16	M 20	M 20
WMax.	140	180	220	270	334
a min.	21,5	32,5	23	22,6	22,6
a max.	30	43,5	37	37	37
b min.	16g6	18g6	14	14	14
c min.	21	26	25	31	31
c max.	21	26	55,5	77	103
d mm	43	57,5	71,5	96	128,5
e mm	32	35	50	55	55
fH7 mm	14	18	21	25,5	25,5
g mm	78	91	108	120	120
Maximum draw bar pull kN	13	16	35	45	45
Max. total clamping force kN	10	12	25	29	29
Max. admissible speed min-1	3500	3000	3000	2500	2200
Moment of inertia J kgm ²	0,01	0,04	0,09	0,2	0,4
Weight without jaws approx. kg	5	9	17	25	36,5
Actuating cylinders (recommended)	OVS-85	OVS-85	OVS-105	OVS-130	OVS-130

C 21

Soft top jaws, 2-jaw set, can be hardened tongue and groove for 2-jaw chucks, material: 16 MnCr 5


Chuck Size	2-jaw set	Jaw length mm	Jaw height mm	Jaw width mm
125	120321	56,5	53	36,5
160	120320	74,5	53	36,5

C 21

Soft top jaws, 2-jaw set, can be hardened serration 90° - material: 16 MnCr 5


Chuck Size	2-jaw set	Jaw length mm	Jaw height mm	Jaw width mm	Serration
200	120318	94	89	68	1/16"x 90°
200	133149	95	54,5	45	1/16"x 90°
250	120316	110	89	68	1/16"x 90°
315	120073	130	89	68	1/16"x 90°

 Configure your individual clamping jaws online! www.web2product.biz