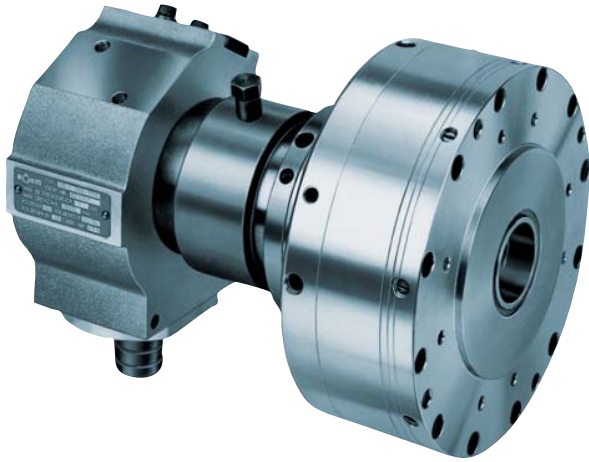


# LHS-L



### APPLICATION

Pneumatic actuation of power chucks/collet chucks with through-hole.

### TYPE

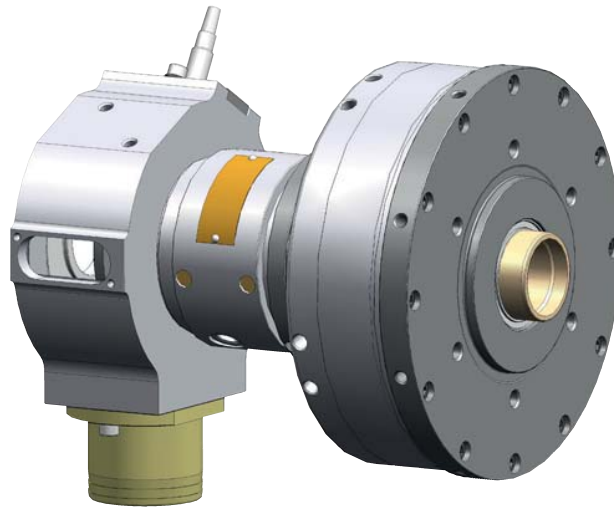
Hollow clamping cylinders for actuation pressures from 1.5-8 bar.

### CUSTOMER BENEFITS

- ④ Short design and low weight ensure small machine spindle load and also allow high speeds
- ④ Thanks to the large through-hole, optimally suited for machining bar material
- ④ Operational safety thanks to safety mechanism, guaranteed even if there is a pressure drop during spindle rotation

### TECHNICAL FEATURES

- Stroke control via inductive proximity switches (not included in the scope of delivery)
- Coolant collector
- Can also be actuated during rotation



Air operated cylinders with through-hole

#### Accessories:

Connection for supply and drain hoses

#### Special accessories:

2 inductive proximity switches piece/item no. 381551 (opener)  
or 2 inductive proximity switches piece/item no. 202759 (closer)

**With tandem piston on request.**

