

BROACHING UNITS FOR MACHINING CENTERS

SYSTEM DESIGN

► BENZ LINS (AXIAL)



- ① **Tool holder, static**
 - For holding the cutting tool
- ② **Drive cone**
 - For holding the broaching fixture in the machine spindle
 - All common drive cones available
- ③ **Changeable torque support arm**
 - Secures the broaching fixture to prevent turning during machining
 - Generally adapted to the specific machine type

SEMI-MODULAR DESIGN

- Drive cone
- Static tool holder

3

Machining centers / Broaching units



The principle behind the shaping/broaching process

See p. 12

Advantages

- Avoidance of a pointed load on the machine main spindle
- Adjustable orientation of the cutter position (rotatable 360° around the spindle axis)



Videos



► BENZ LinS - in use

Scan the adjacent QR code with a smartphone and see a demonstration of the BENZ LinS in action. Alternatively, you can visit our YouTube channel to view the video: www.youtube.com/BENZWerkzeugsysteme

▶ TYPE OVERVIEW

▶ BENZ LinS - static

WAS = Axial type



Note:

- ▶ The products displayed in this catalog are standard components. We would be happy to develop a suitable solution together with you to meet your specific requirements.
- ▶ Delivery does not include equipment variants or accessories. Please order these separately at your preferred cutting insert manufacturer. We offer starter kits consisting of a broaching unit and predefined clamping holders to help get you started with your push-slotting operation quickly.
- ▶ For all BENZ LinS broaching fixtures for machining centers, an auxiliary support is recommended.

BROACHING UNITS FOR MACHINING CENTERS

BENZ LINS - AXIAL

▶ PRODUCT IN OVERVIEW



▶ TYPE

WAS

▶ DRIVE CONE



SK
DIN 69871



MAS BT



CAT



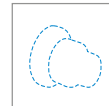
HSK
DIN 69893



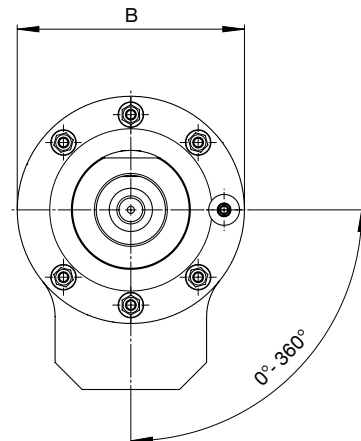
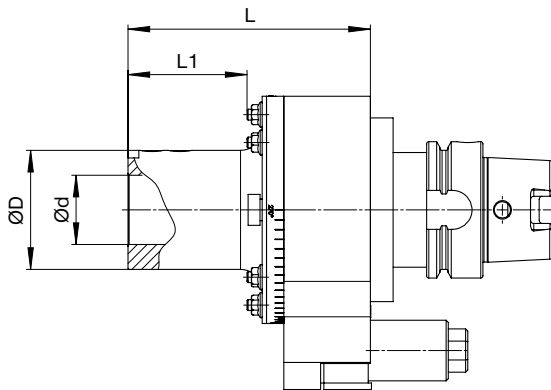
Coromant
Capto®



KM™



Other



WAS	
Usable working stroke / Total stroke	= depending on Tool
Material strength _{max}	= 1,100 N/mm ²

▶ Technical data						
L1 [mm]	Ød [mm]	ØD [mm]	B [mm]	L [mm]	Weight [kg]	
55	16-32	55	105	112	approx. 5	