

BROACHING UNITS FOR MACHINING CENTERS

BENZ LINA - AXIAL

▶ PRODUCT IN OVERVIEW



- ▶ **max. groove width** 8-10 mm
- ▶ **Ratio** 1:1
- ▶ **max. feed per stroke** 0.15 mm
- ▶ **max. speed** 800 rpm

▶ TYPE

DS

▶ DRIVE CONE



SK
DIN 69871



MAS BT



CAT



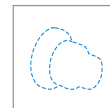
HSK
DIN 69893



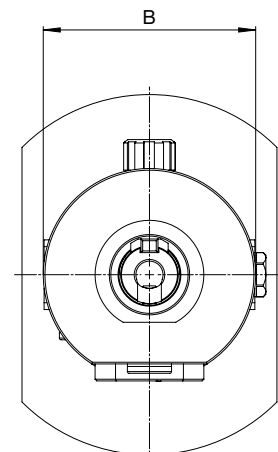
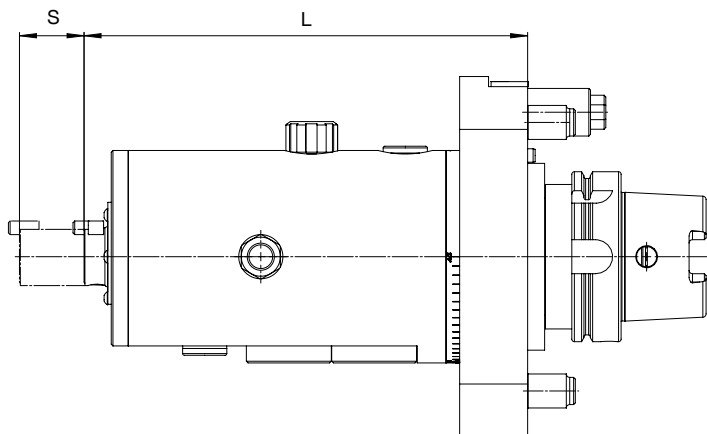
Coromant
Capto®



KM™



Other



DS	
Usable working stroke	= 35 mm
Total stroke	= 38 mm
Material strength _{max}	= 900 N/mm ²
No. of strokes/speed _{max}	= 800 rpm

▶ Technical data				
	B [mm]	S [mm]	L [mm]	Weight [kg]
	128	35/38	261	approx. 16