

ANGLE HEAD SLIM WGX

2

SLIM WGX / Design overview / Angle heads

► MODULAR DESIGN



► ANGLE HEAD BODY (SIZE)

05

07

► OUTPUT SPINDLE / CLAMPING SYSTEM



BENZ
Solidfix®



Collet chuck

► DRIVE CONE



SK
DIN 69871



MAS BT



CAT



HSK
DIN 69893



Coromant
Capto®



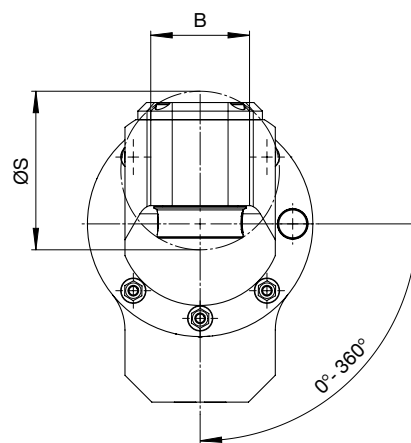
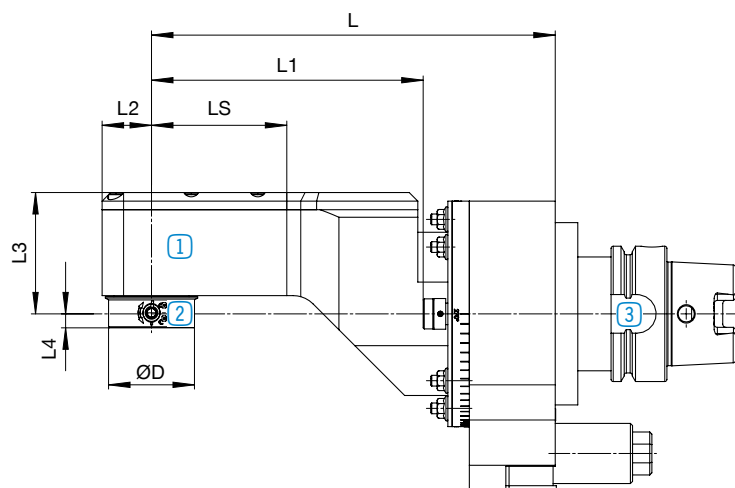
KM™

► Specifications

Change the angle head	Machining	Number of output spindles	Axis angle	Coolant feed for cutting edge

SLIM WGX

► Angle head without IC



① Angle head body
P. 42

extremely narrow
design
P. 46



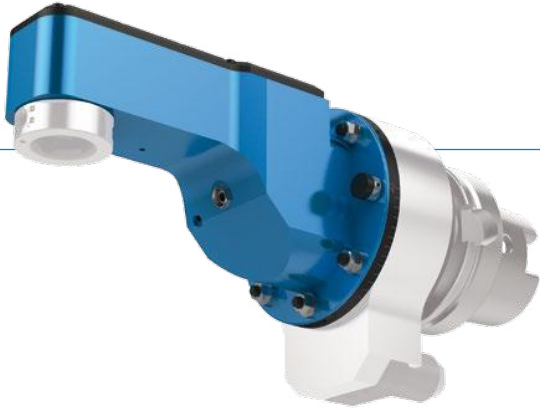
② Output spindle /
clamping system
P. 44



③ Drive cone
P. 50

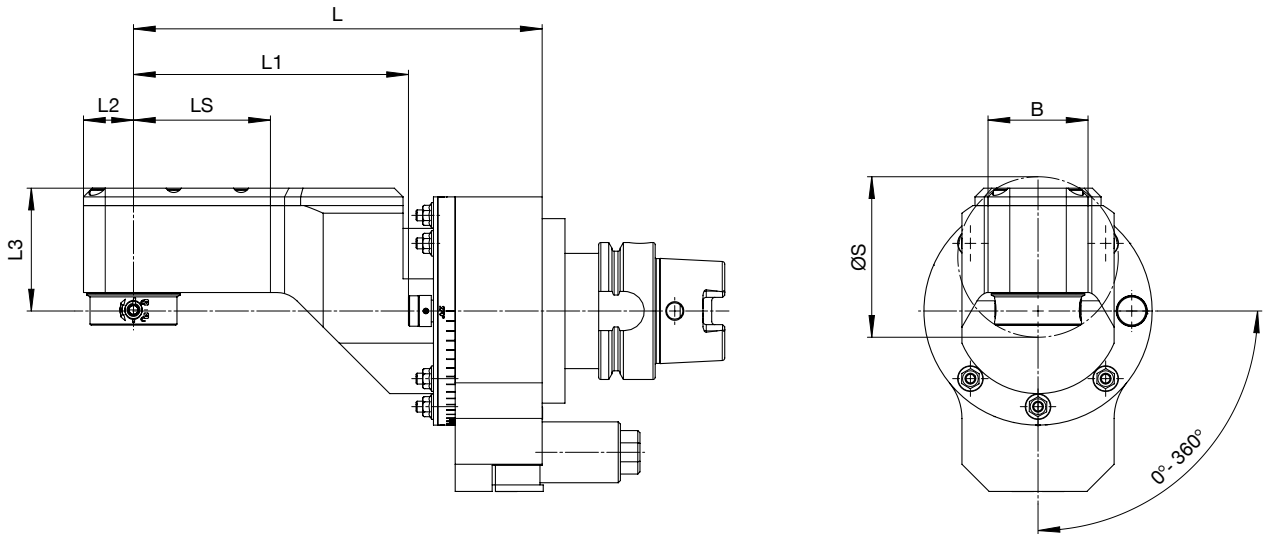
ANGLE HEAD SLIM WGX

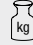
▶ ANGLE HEAD BODY (SIZE)




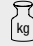
i More sizes on request.
Higher speeds are possible as an option.

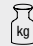
▶ Angle head without IC



Size 05 / L2=16		▶ Technical data									
		L1 [mm]	LS [mm]	L2 [mm]	L3 [mm]	B [mm]	ØS [mm]	L [mm]	EC*	IC	
M _{max}	= 12 Nm		24.2					149.2	- / ✓		5
i	= 1:1,607	-	56.2	16	56	40	63	181.2	- / ✓	-	5.2
n _{max}	= 8,000 min ⁻¹							213.2	- / ✓		5.4
p _{max}	= 100 bar		88.2								

Size 05 / L2=18		▶ Technical data									
		L1 [mm]	LS [mm]	L2 [mm]	L3 [mm]	B [mm]	ØS [mm]	L [mm]	EC*	IC	
M _{max}	= 15 Nm		25.4					150.4	- / ✓		5.2
i	= 1:1,452	-	57.4	18	58.5	40	71	182.4	- / ✓	-	5.3
n _{max}	= 8,000 min ⁻¹							213.4	- / ✓		5.4
p _{max}	= 100 bar		89.4								

Size 05 / L2=23		▶ Technical data									
		L1 [mm]	LS [mm]	L2 [mm]	L3 [mm]	B [mm]	ØS [mm]	L [mm]	EC*	IC	
M _{max}	= 15 Nm		31					156	- / ✓		5.4
i	= 1:1	-	63	23	56.5	46	74	188	- / ✓	-	5.5
n _{max}	= 8,000 min ⁻¹							220	- / ✓		5.7
p _{max}	= 100 bar		95								

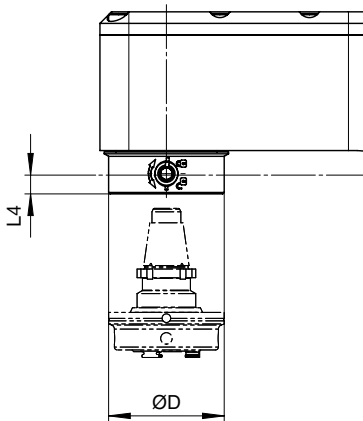
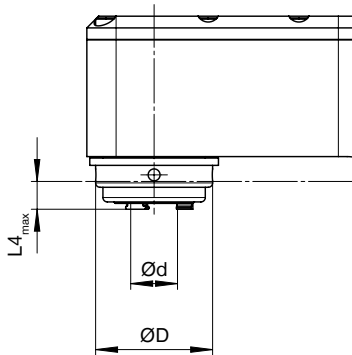
Size 07		▶ Technical data									
		L1 [mm]	LS [mm]	L2 [mm]	L3 [mm]	B [mm]	ØS [mm]	L [mm]	EC*	IC	
M _{max}	= 35 Nm		54					178	- / ✓		9
i	= 1:1	-	85	26	65	52	78	215	- / ✓	-	9.5
n _{max}	= 6,000 min ⁻¹							290	- / ✓		10
p _{max}	= 100 bar		160								



*Optional: EC via spray nozzle

ANGLE HEAD SLIM WGX

▶ OUTPUT SPINDLE / CLAMPING SYSTEM



Collet chuck

	Size	L4 _{max} [mm]	ØD [mm]	Ød _{max} [mm]
ER16A	05 / L2=18	7	44	10
ER20A	05 / L2=23	10	44	13
ER25A	07	4	47	16

▶ Technical data

i For adapters and dimensions, see catalogue [BENZ Modular Tool Systems](#)



BENZ Solidfix®

	Size	L4 [mm]	ØD [mm]
S2	05	6.5	40
S3	07	2.5	50

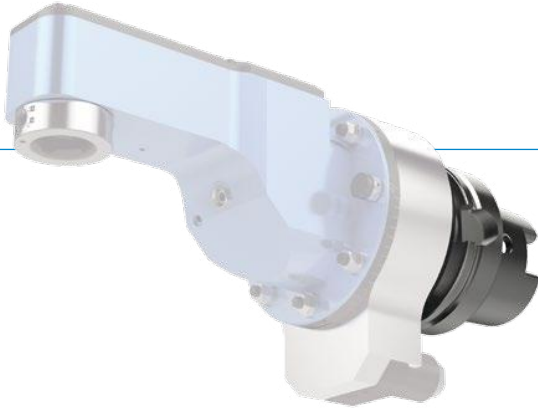
▶ Technical data

ANGLE HEAD SLIM WGX

2

SLIM WGX / Design overview / Angle heads

▶ DRIVE CONE



i Technical data for other machine interfaces on request.

Type: Steep taper



	▶ Size			
SK DIN 69871	04	05	07	15
SK 40	✓	✓	✓	-
SK 50	✓	✓	✓	✓



	▶ Size			
MAS BT	04	05	07	15
BT 40	✓	✓	✓	-
BT 50	✓	✓	✓	✓



	▶ Size			
CAT	04	05	07	15
CAT 40	✓	✓	✓	-
CAT 50	✓	✓	✓	✓

Type: **Hollow shank taper**



HSK DIN 69893	▶ Size			
	04	05	07	15
HSK 40	✓	-	-	-
HSK 50	✓	✓	-	-
HSK 63	✓	✓	✓	-
HSK 80	✓	✓	✓	✓
HSK 100	✓	✓	✓	✓



Coromant Capto®	▶ Size			
	04	05	07	15
C3	✓	-	-	-
C4	✓	✓	-	-
C5	✓	✓	✓	✓
C6	✓	✓	✓	✓
C8	✓	✓	✓	✓



Kennametal™	▶ Size			
	04	05	07	15
KM 40	✓	-	-	-
KM 50	✓	✓	-	-
KM 63	✓	✓	✓	-
KM 80	✓	✓	✓	✓
KM 100	✓	✓	✓	✓