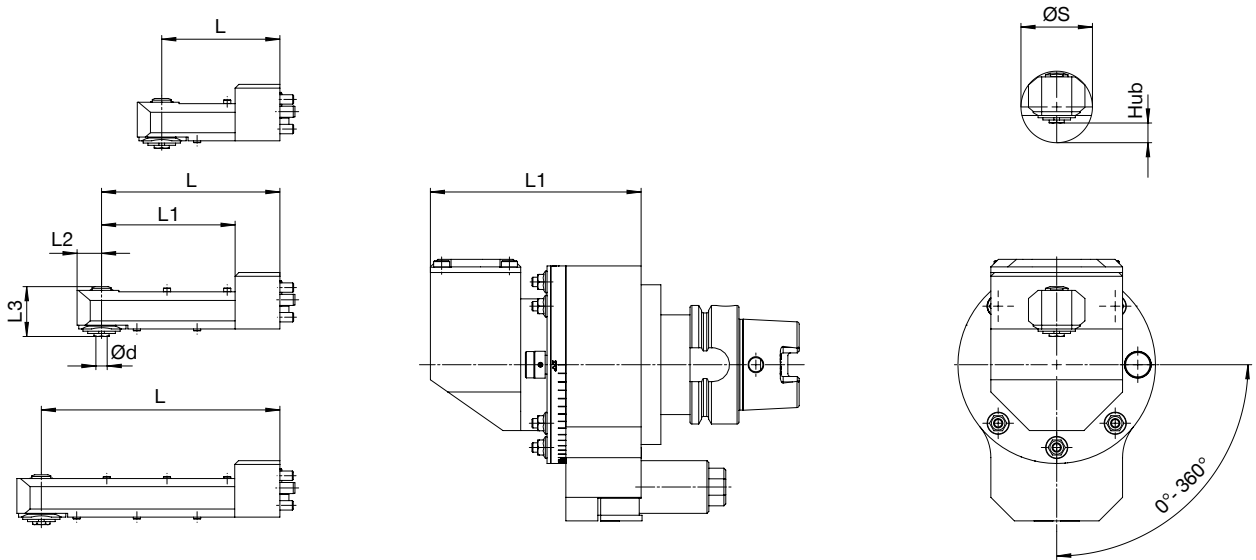


ANGLE HEAD SLIM WGX-S

▶ EXTREMELY NARROW DESIGN

▶ Angle head without IC



		▶ Technical data										
Size 05 / ØS=25		L1 [mm]	L2 [mm]	L3 [mm]	L5 [mm]	Ød [mm]	ØS [mm]	L [mm]	Hub [mm]	EC*	IC	kg
M _{max}	= 3 Nm	39			39			63		- / ✓		3.7
i	= 1:2,22	71	13	20	71	4	25	95	4	- / ✓	-	3.8
n _{max}	= 8,000 min ⁻¹					Special						
p _{max}	= 100 bar	103			103			127		- / ✓		3.9

		▶ Technical data										
Size 05 / ØS=29		L1 [mm]	L2 [mm]	L3 [mm]	L5 [mm]	Ød [mm]	ØS [mm]	L [mm]	Hub [mm]	EC*	IC	kg
M _{max}	= 3 Nm	39						63		- / ✓		3.8
i	= 1:2,22	71	13	20	14	4	29	95	6	- / ✓	-	3.9
n _{max}	= 8,000 min ⁻¹					Special						
p _{max}	= 100 bar	103						127		- / ✓		4.0

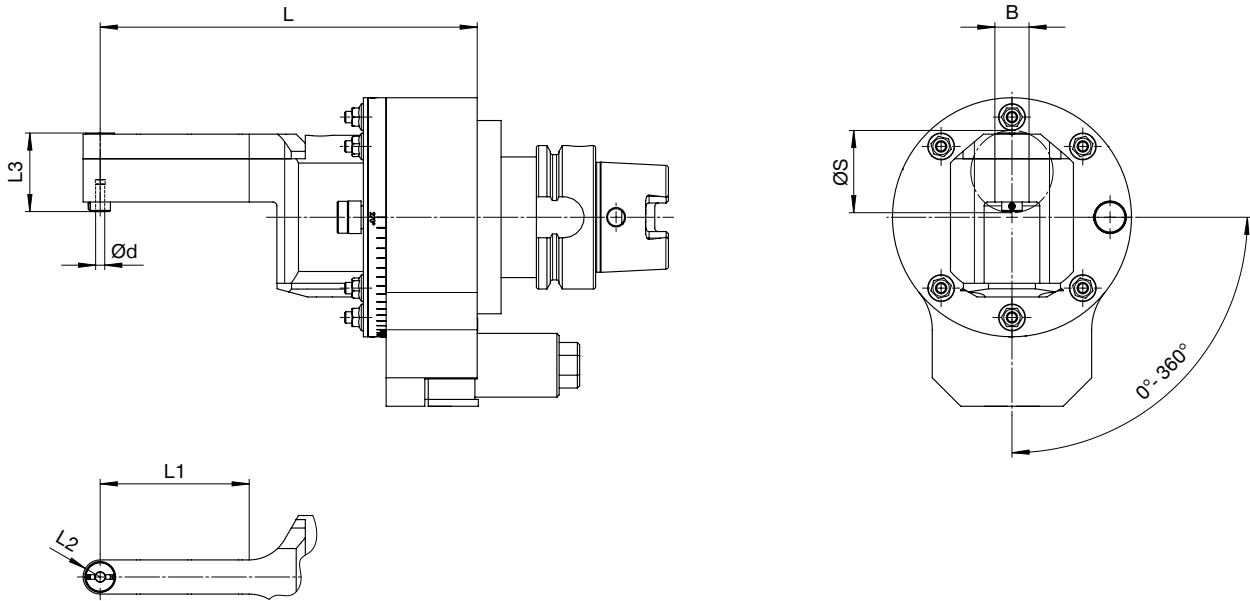
		▶ Technical data										
Size 05 / ØS=32		L1 [mm]	L2 [mm]	L3 [mm]	L5 [mm]	Ød [mm]	ØS [mm]	L [mm]	Hub [mm]	EC*	IC	kg
M _{max}	= 5 Nm	39						63		- / ✓		3.8
i	= 1:1,2	71	13	27	14	5	32	95	9	- / ✓	-	4
n _{max}	= 8,000 min ⁻¹					Special						
p _{max}	= 100 bar	103						127		- / ✓		4.2




*Optional: EC via spray nozzle

▶ EXTREMELY NARROW DESIGN

▶ Angle head without IC



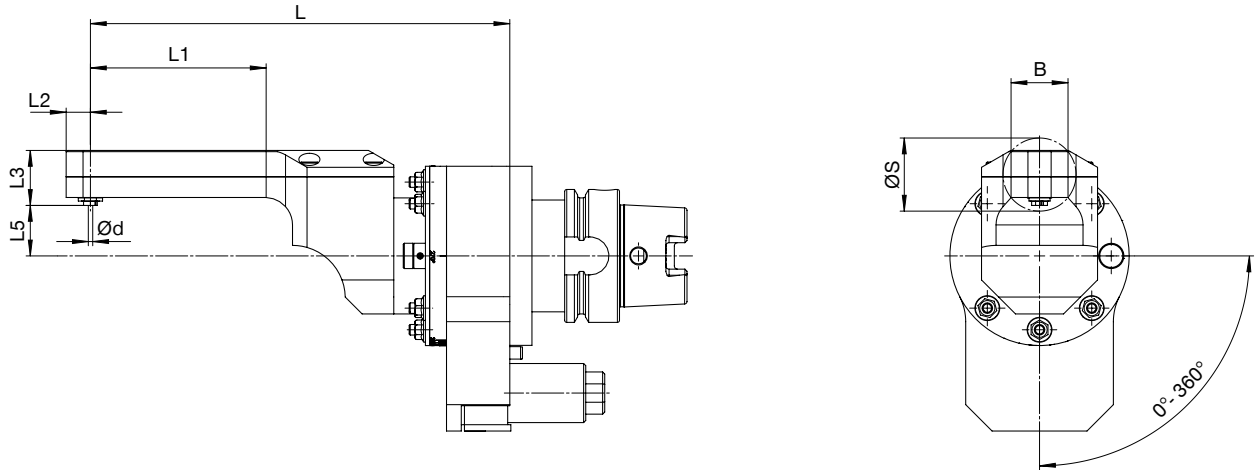
▶ Technical data

Size 04 / L2=7,5		L1 [mm]	L2 [mm]	L3 [mm]	Ød [mm]	B [mm]	ØS [mm]	L [mm]	EC	IC	
M _{max}	= 3 Nm	66	7.5	35	4	15	37	166	-	-	5.4
i	= 1:2,07				DIN 1835E						
n _{max}	= 8,000 min ⁻¹										
p _{max}	= 50 bar										

ANGLE HEAD SLIM WGX-S

▶ EXTREMELY NARROW DESIGN

▶ Angle head without IC



2

SLIM WGX / Design overview / Angle heads

Size 04 / L2=11,5

M_{max}	= 8 Nm
i	= 1:1,708
n_{max}	= 10,000 min ⁻¹
p_{max}	= 50 bar

▶ Technical data

L1 [mm]	L2 [mm]	L3 [mm]	L5 [mm]	B [mm]	Ød [mm]	ØS [mm]	L [mm]	EK*	IK	kg
38.5					Nann collet chuck 6043E	37	154	- / ✓		3.7
83.5	11.5	32	20	27			199	- / ✓	-	3.8
128							244	- / ✓		3.9

Size 04 / L2=14

M_{max}	= 10 Nm
i	= 1:1,367
n_{max}	= 8,000 min ⁻¹
p_{max}	= 50 bar

▶ Technical data

L1 [mm]	L2 [mm]	L3 [mm]	L5 [mm]	B [mm]	Ød [mm]	ØS [mm]	L [mm]	EK*	IK	kg
43					Nann collet chuck 603E	42	158	- / ✓		3.8
89	14	38	14	30			205	- / ✓	-	4
135							251	- / ✓		4.2



*Optional: EC via spray nozzle