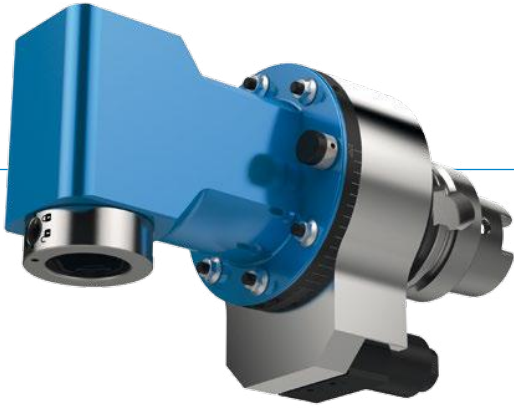


ANGLE HEAD MONO WSX

► MODULAR DESIGN



► ANGLE HEAD BODY (SIZE)

04

05

07

15

20

► OUTPUT SPINDLE / CLAMPING SYSTEM



BENZ
Solidfix®



BENZ
CAPTO™



Collet chuck



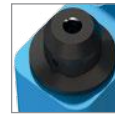
HSK



Milling arbor



Weldon



Whistle
Notch



KM™

► DRIVE CONE



SK



MAS BT



CAT



HSK
DIN 69893



Coromant
Capto®



KM™

► Specifications

Change the
angle head



Machining



Number of
output spindles



Axis angle



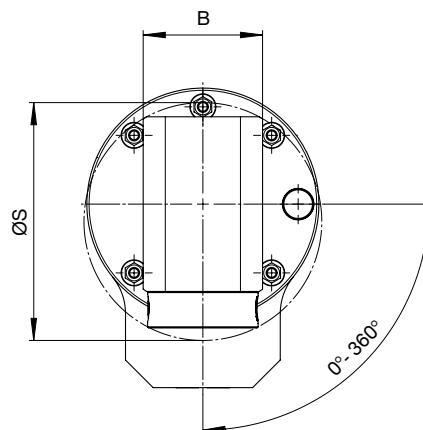
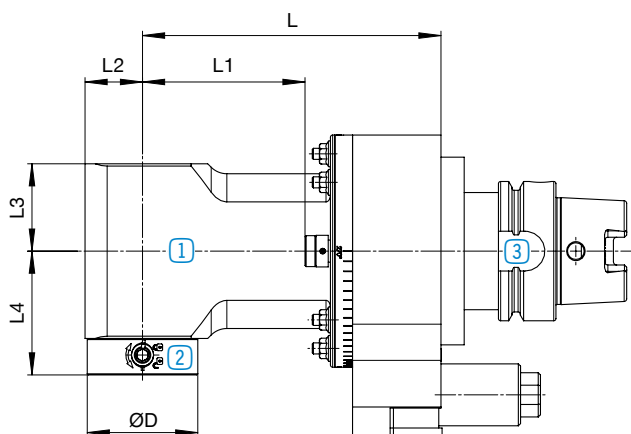
Coolant feed for cutting
edge



Option

MONO WSX

► Angle head without IC



① Angle head body
P. 18



② Output spindle /
clamping system
P. 20



③ Drive cone
P. 22



Other dimensions for angle heads with BENZ CAPTO™ output spindle. Dimensions available on request.

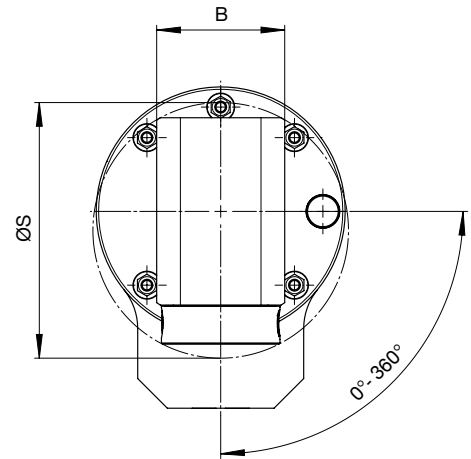
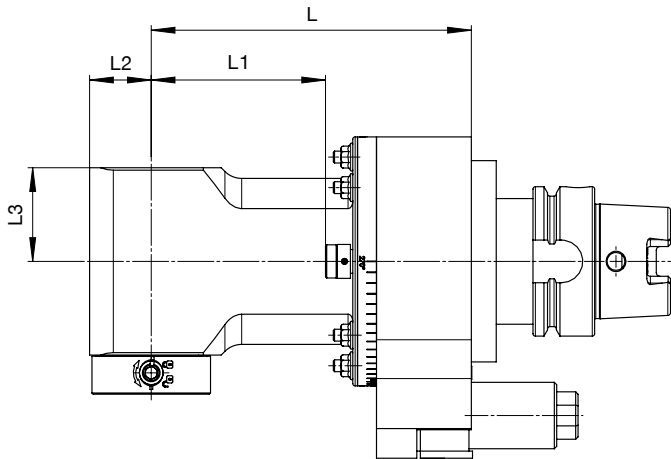
ANGLE HEAD MONO WSX


▶ ANGLE HEAD BODY (SIZE)





More sizes on request.
Higher speeds are possible as an option.


▶ Angle head without IC




Size 04		► Technical data								
		L1 [mm]	L2 [mm]	L3 [mm]	B [mm]	ØS [mm]	L [mm]	EC*	IC	
M _{max}	= 15 Nm	43.5					95			4
i	= 1:1	93.5	24	35.5	46	95	145	-	-	4.3
n _{max}	= 10,000 min ⁻¹	123.5					175			4.5

Size 05		► Technical data								
		L1 [mm]	L2 [mm]	L3 [mm]	B [mm]	ØS [mm]	L [mm]	EC*	IC	
M _{max}	= 30 Nm	26.5					88	-		5
i	= 1:1	73.5	26	39.5	54	108	135	- / ✓	-	5.5
n _{max}	= 8,000 min ⁻¹	133.5					195	- / ✓		6.5
p _{max}	= 70 bar*									

Size 07		► Technical data								
		L1 [mm]	L2 [mm]	L3 [mm]	B [mm]	ØS [mm]	L [mm]	EC*	IC	
M _{max}	= 70 Nm	43.5					105	-		8.5
i	= 1:1	88.5	35	51	80	141	150	- / ✓	-	9.5
n _{max}	= 6,000 min ⁻¹	153.5					215	- / ✓		11
p _{max}	= 70 bar*									

Size 15		► Technical data								
		L1 [mm]	L2 [mm]	L3 [mm]	B [mm]	ØS [mm]	L [mm]	EC*	IC	
M _{max}	= 150 Nm	85.5					155	-		14.5
i	= 1:1	155.5	40	63	92	169	225	- / ✓	-	17
n _{max}	= 4,000 min ⁻¹	228.5					298	- / ✓		19.5
p _{max}	= 70 bar*									

Size 20		► Technical data								
		L1 [mm]	L2 [mm]	L3 [mm]	B [mm]	ØS [mm]	L [mm]	EC*	IC	
M _{max}	= 230 Nm	101					171	-		16.5
i	= 1:1	171	45	63	100	182	241	- / ✓	-	19
n _{max}	= 3,000 min ⁻¹	241					311	- / ✓		21.5
p _{max}	= 70 bar*									



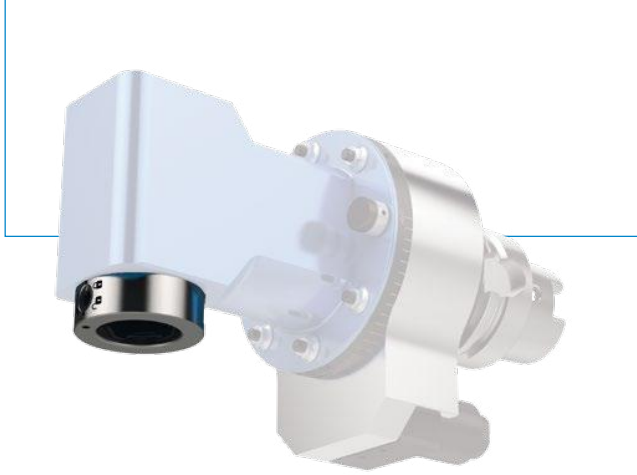
*Optional: EC via spray nozzle

ANGLE HEAD MONO WSX

2

MONO WSX / Design overview / Angle heads

▶ OUTPUT SPINDLE / CLAMPING SYSTEM



i Technical data for other output spindles / clamping systems on request:



Weldon

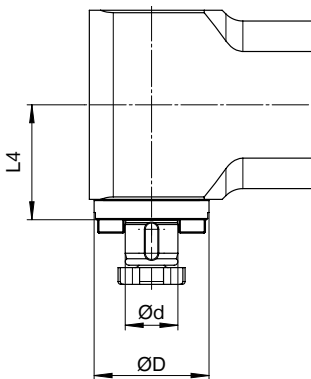
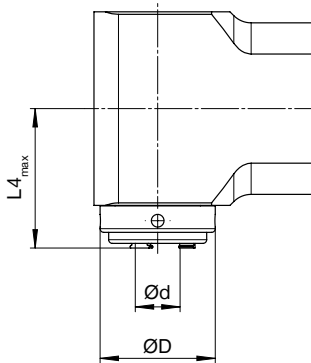


Whistle
Notch



KM™

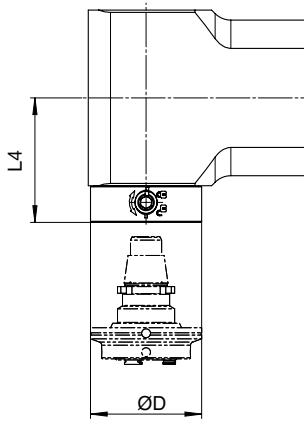
i We show you **preferable sizes** in the following tables. Smaller output spindles are possible at any time as an option.



▶ Technical data				
Collet chuck	Size	L4 _{max} [mm]	ØD [mm]	Ød _{max} [mm]
ER16A	04	46	44	10
ER20A	04	54	44	13
ER25A	05	57	47	16
ER32A	07	69	55	20
ER40A	15	82	70	30



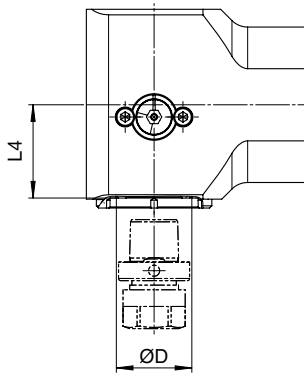
▶ Technical data				
Milling arbor	Size	L4 [mm]	ØD [mm]	Ød [mm]
22	05	48	48	22
27	07	62.5	60	27
32	15	76	75	32
40	15	77.5	90	40



i For adapters and dimensions, see catalogue **BENZ Modular Tool Systems**



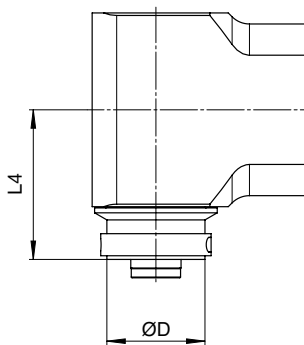
▶ Technical data			
BENZ Solidfix®	Size	L4 [mm]	ØD [mm]
S2	04	49.5	40
S3	05	56	50
S4	07	72	63
S5	15	86	75



i For adapters and dimensions, see catalogue **BENZ Modular Tool Systems**



▶ Technical data			
BENZ CAPTO™	Size	L4 [mm]	ØD [mm]
C3	05	42	32
C4	07	52	40
C5	15	60	50
C6	20	75	63



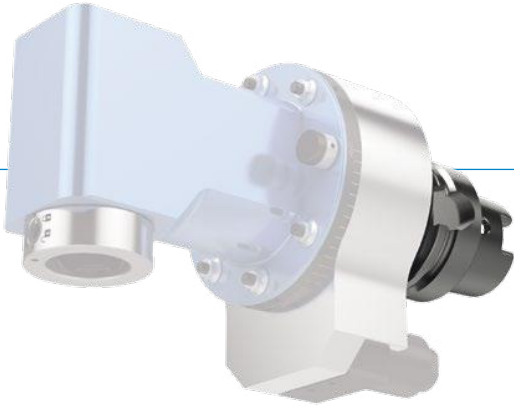
▶ Technical data			
HSK	Size	L4 [mm]	ØD [mm]
HSK 40	05	59	40
HSK 50	07	68	50
HSK 63	15	93	65

ANGLE HEAD MONO WSX

2

MONO WSX / Design overview / Angle heads

▶ DRIVE CONE



i Technical data for other machine interfaces on request.

Type: Steep taper



	▶ Size				
SK DIN 69871	04	05	07	15	20
SK 40	✓	✓	✓	-	-
SK 50	✓	✓	✓	✓	✓



	▶ Size				
MAS BT	04	05	07	15	20
BT 40	✓	✓	✓	-	-
BT 50	✓	✓	✓	✓	✓



	▶ Size				
CAT	04	05	07	15	20
CAT 40	✓	✓	✓	-	-
CAT 50	✓	✓	✓	✓	✓

Type: **Hollow shank taper**



	▶ Size				
HSK DIN 69893	04	05	07	15	20
HSK 40	✓	-	-	-	-
HSK 50	✓	✓	-	-	-
HSK 63	✓	✓	✓	-	-
HSK 80	✓	✓	✓	✓	-
HSK 100	✓	✓	✓	✓	✓



	▶ Size				
Coromant Capto®	04	05	07	15	20
C3	✓	-	-	-	-
C4	✓	✓	-	-	-
C5	✓	✓	✓	✓	-
C6	✓	✓	✓	✓	✓
C8	✓	✓	✓	✓	✓



	▶ Size				
Kennametal™	04	05	07	15	20
KM 40	✓	-	-	-	-
KM 50	✓	✓	-	-	-
KM 63	✓	✓	✓	-	-
KM 80	✓	✓	✓	✓	-
KM 100	✓	✓	✓	✓	✓