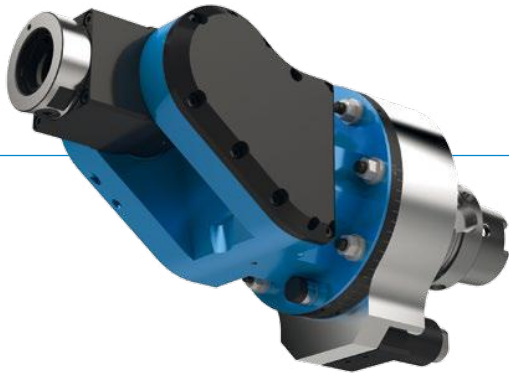


# ANGLE HEAD

## FLEX WDX

### ► MODULAR DESIGN



### ► ANGLE HEAD BODY (SIZE)

05

07

15

### ► OUTPUT SPINDLE / CLAMPING SYSTEM



BENZ  
Solidfix®



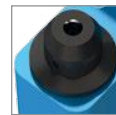
Collet chuck



HSK



Weldon



Whistle  
Notch



KM™

### ► DRIVE CONE



SK  
DIN 69871



MAS BT



CAT



HSK  
DIN 69893



Coromant  
Capto®



KM™

### ► Specifications

Change the  
angle head



Machining



Number of  
output spindles



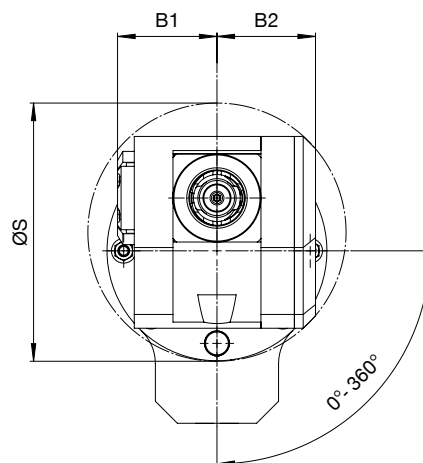
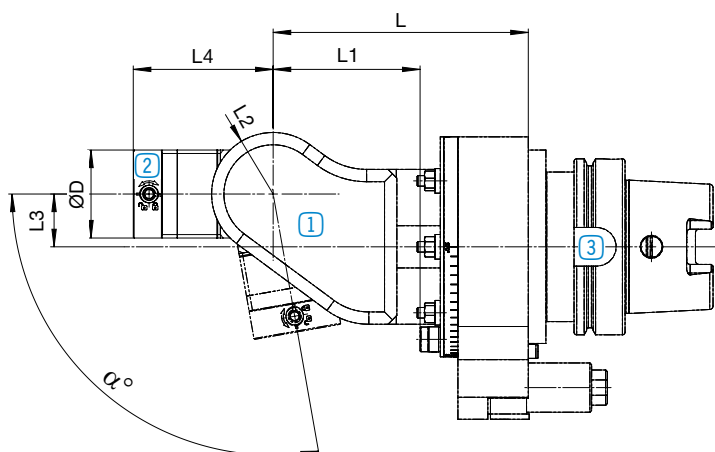
Axis angle



Coolant feed for cutting  
edge



► Angle head with IC



1 Angle head body  
P. 62



2 Output spindle /  
clamping system  
P. 64



3 Drive cone  
P. 66

# ANGLE HEAD FLEX WDX

2

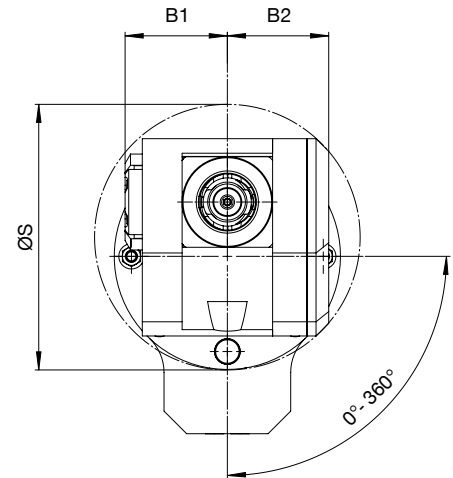
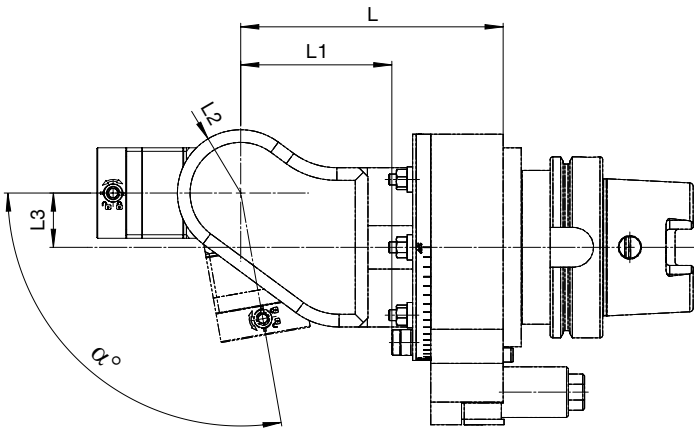
FLEX WDX / Design overview / Angle heads


## ▶ ANGLE HEAD BODY (SIZE)





More sizes on request.  
Higher speeds are possible as an option.

## ▶ Angle head with IC



Size 05		▶ Technical data										
		$\alpha$ [°]	L1 [mm]	L2 [mm]	L3 [mm]	B1 [mm]	B2 [mm]	$\varnothing$ S [mm]	L [mm]	EC	IC	
$M_{max}$	= 15 Nm	0-90°	72.5	35	25	49.5	49.5	127	134	-	✓	7
$i$	= 1:1											
$n_{max}$	= 8,000 min <sup>-1</sup>											
$p_{max}$	= 100 bar											

Size 07		▶ Technical data										
		$\alpha$ [°]	L1 [mm]	L2 [mm]	L3 [mm]	B1 [mm]	B2 [mm]	$\varnothing$ S [mm]	L [mm]	EC	IC	
$M_{max}$	= 35 Nm	0-100°	83.5	35	30	56.5	56	147	145	-	✓	10
$i$	= 1:1											
$n_{max}$	= 6,000 min <sup>-1</sup>											
$p_{max}$	= 100 bar											

Size 15		▶ Technical data										
		$\alpha$ [°]	L1 [mm]	L2 [mm]	L3 [mm]	B1 [mm]	B2 [mm]	$\varnothing$ S [mm]	L [mm]	EC	IC	
$M_{max}$	= 70 Nm	0-90°	136.5	50	35	64.5	67	178	205	-	✓	18
$i$	= 1:1											
$n_{max}$	= 4,000 min <sup>-1</sup>											
$p_{max}$	= 100 bar											

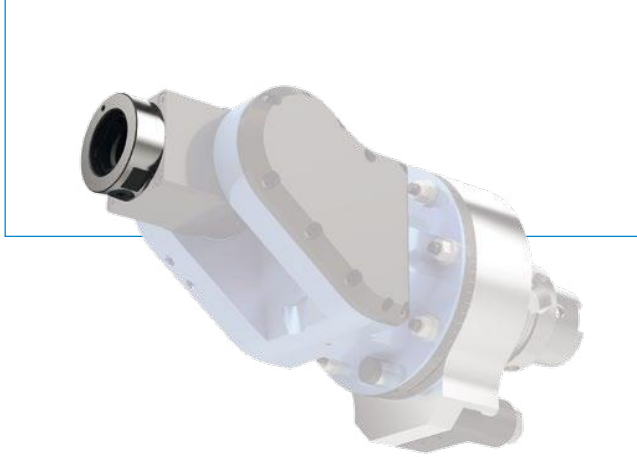
# ANGLE HEAD

## FLEX WDX

2

FLEX WDX / Design overview / Angle heads

### ▶ OUTPUT SPINDLE / CLAMPING SYSTEM



**i** Technical data for other output spindles / clamping systems on request:



Weldon

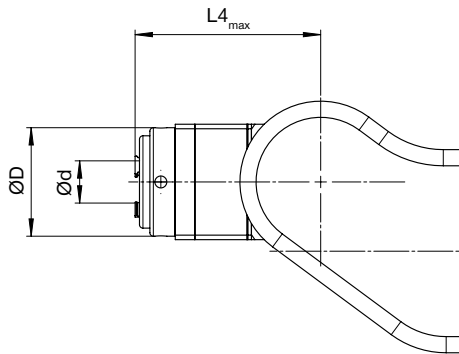


Whistle  
Notch



KM™

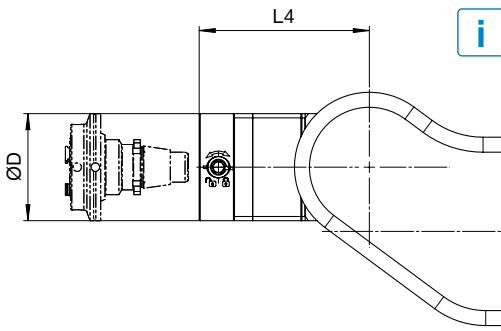
**i** We show you **preferable sizes** in the following tables. Smaller output spindles are possible at any time as an option.



#### Collet chuck

Collet chuck	Size	L4 <sub>max</sub> [mm]	ØD [mm]	Ød <sub>max</sub> [mm]
ER20A	05	80	44	16
ER25A	07	85	47	20
ER32A	15	106	55	30

#### ▶ Technical data

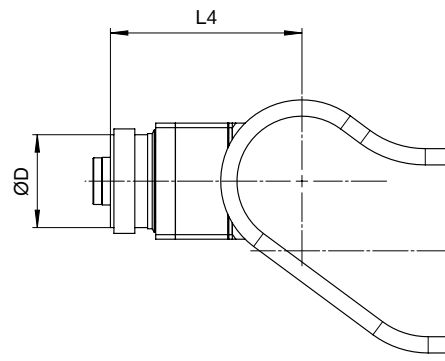


**i** For adapters and dimensions, see catalogue  
**BENZ Modular Tool Systems**



► **Technical data**

BENZ Solidfix®	Size	L4 [mm]	ØD [mm]
<b>S2</b>	05	75	50
<b>S3</b>	07	80	63
<b>S4</b>	15	102	75



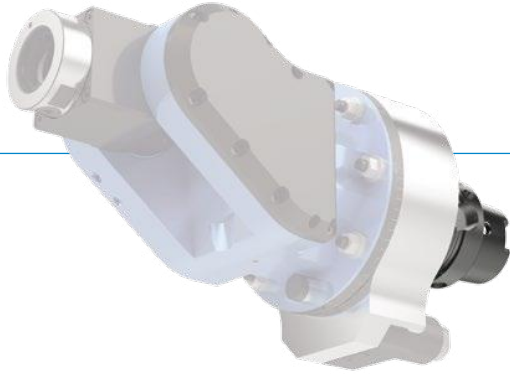
► **Technical data**

HSK	Size	L4 [mm]	ØD [mm]
<b>HSK 32</b>	05	74	32
<b>HSK 40</b>	07	84	40
<b>HSK 50</b>	15	103	50

# ANGLE HEAD

## FLEX WDX

### ▶ DRIVE CONE



**i** Technical data for other machine interfaces on request.

2

FLEX WDX / Design overview / Angle heads

### Type: Steep taper



	▶ Size		
<b>SK</b> DIN 69871	05	07	15
<b>SK 40</b>	✓	✓	-
<b>SK 50</b>	✓	✓	✓



	▶ Size		
<b>MAS BT</b>	05	07	15
<b>BT 40</b>	✓	✓	-
<b>BT 50</b>	✓	✓	✓



	▶ Size		
<b>CAT</b>	05	07	15
<b>CAT 40</b>	✓	✓	-
<b>CAT 50</b>	✓	✓	✓

## Type: Hollow shank taper



**HSK**  
DIN 69893

	▶ Size		
	05	07	15
<b>HSK 40</b>	-	-	-
<b>HSK 50</b>	✓	-	-
<b>HSK 63</b>	✓	✓	-
<b>HSK 80</b>	✓	✓	✓
<b>HSK 100</b>	✓	✓	✓



**Coromant Capto®**

	▶ Size		
	05	07	15
<b>C3</b>	-	-	-
<b>C4</b>	✓	-	-
<b>C5</b>	✓	✓	✓
<b>C6</b>	✓	✓	✓
<b>C8</b>	✓	✓	✓



**Kennametal™**

	▶ Size		
	05	07	15
<b>KM 40</b>	-	-	-
<b>KM 50</b>	✓	-	-
<b>KM 63</b>	✓	✓	-
<b>KM 80</b>	✓	✓	✓
<b>KM 100</b>	✓	✓	✓