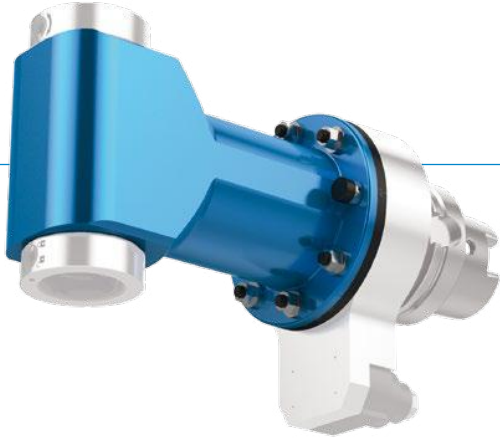


# ANGLE HEAD

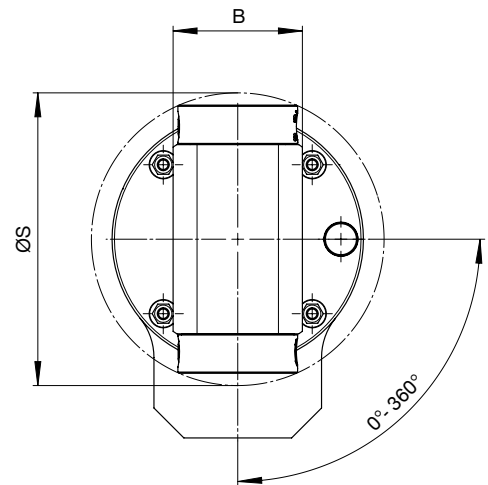
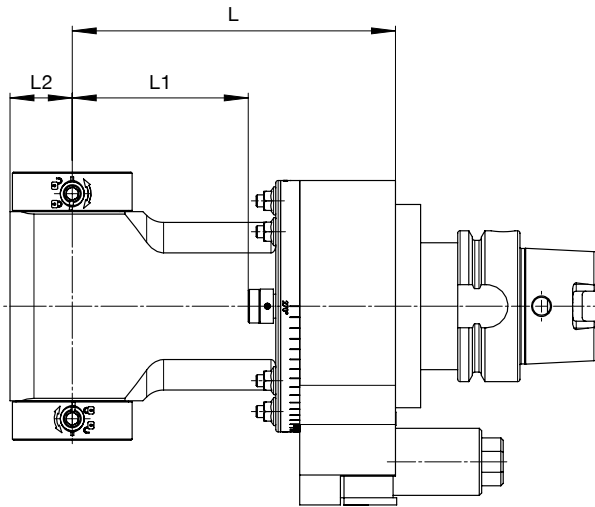
## DUO WZX


### ▶ ANGLE HEAD BODY (SIZE)





**i** More sizes on request.  
Higher speeds are possible as an option.


### ▶ Angle head without IC




Size 04		▶ Technical data								
		L1 [mm]	L2 [mm]	L3 [mm]	B [mm]	ØS [mm]	L [mm]	EC*	IC	
M <sub>max</sub>	= 15 Nm	43.5					95			4
i	= 1:1	93.5	24	-	46	107	145	-	-	4.3
n <sub>max</sub>	= 10,000 rpm	123.5					175			4.5

Size 05		▶ Technical data								
		L1 [mm]	L2 [mm]	L3 [mm]	B [mm]	ØS [mm]	L [mm]	EC*	IC	
M <sub>max</sub>	= 30 Nm	26.5					88	-		5
i	= 1:1	73.5	26	-	54	123	135	- / ✓	-	5.5
n <sub>max</sub>	= 8,000 rpm	133.5					195	- / ✓		6.5
p <sub>max</sub>	= 70 bar*									

Size 07		▶ Technical data								
		L1 [mm]	L2 [mm]	L3 [mm]	B [mm]	ØS [mm]	L [mm]	EC*	IC	
M <sub>max</sub>	= 70 Nm	43.5					105	-		8.5
i	= 1:1	88.5	35	-	80	157	150	- / ✓	-	9.5
n <sub>max</sub>	= 6,000 rpm	153.5					215	- / ✓		11
p <sub>max</sub>	= 70 bar*									

Size 15		▶ Technical data								
		L1 [mm]	L2 [mm]	L3 [mm]	B [mm]	ØS [mm]	L [mm]	EC*	IC	
M <sub>max</sub>	= 150 Nm	85.5					155	-		14.5
i	= 1:1	155.5	40	-	92	188	225	- / ✓	-	17
n <sub>max</sub>	= 4,000 rpm	228.5					298	- / ✓		19.5
p <sub>max</sub>	= 70 bar*									

Size 20		▶ Technical data								
		L1 [mm]	L2 [mm]	L3 [mm]	B [mm]	ØS [mm]	L [mm]	EC*	IC	
M <sub>max</sub>	= 230 Nm	101					171	-		16.5
i	= 1:1	171	45	-	100	205	241	- / ✓	-	19
n <sub>max</sub>	= 3,000 rpm	241					311	- / ✓		21.5
p <sub>max</sub>	= 70 bar*									



\*Optional: EC via spray nozzle

# ANGLE HEAD

## DUO WZX

2

DUO WZX / Design overview / Angle heads

### ▶ OUTPUT SPINDLE / CLAMPING SYSTEM



**i** Technical data for other output spindles / clamping systems on request:



Weldon

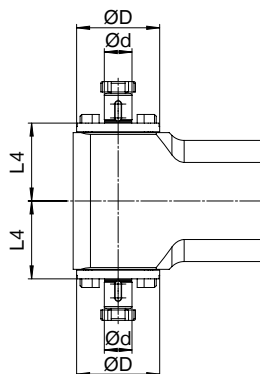
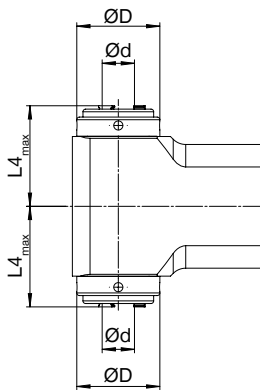


Whistle Notch



KM™

**i** We show you **preferable sizes** in the following tables. Smaller output spindles are possible at any time as an option.



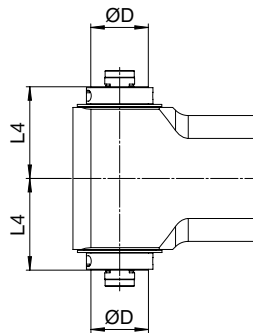
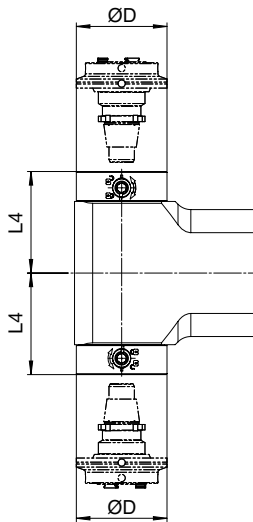
#### ▶ Technical data

Collet chuck	Size	L4 <sub>max</sub> [mm]	ØD [mm]	Ød <sub>max</sub> [mm]
<b>ER16A</b>	04	46	44	10
<b>ER20A</b>	04	54	44	13
<b>ER25A</b>	05	57	47	16
<b>ER32A</b>	07	69	55	20
<b>ER40A</b>	15	82	70	30



#### ▶ Technical data

Milling arbor	Size	L4 [mm]	ØD [mm]	Ød [mm]
<b>22</b>	05	48	48	22
<b>27</b>	07	62.5	60	27
<b>32</b>	15	76	75	32
<b>40</b>	15	77.5	90	40



**i** For adapters and dimensions, see catalogue **BENZ Modular Tool Systems**



► **Technical data**

BENZ Solidfix®	Size	L4 [mm]	ØD [mm]
<b>S2</b>	04	49.5	40
<b>S3</b>	05	56	50
<b>S4</b>	07	72	63
<b>S5</b>	15	86	75



► **Technical data**

HSK	Size	L4 [mm]	ØD [mm]
<b>HSK 40</b>	05	59	40
<b>HSK 50</b>	07	68	50
<b>HSK 63</b>	15	93	65

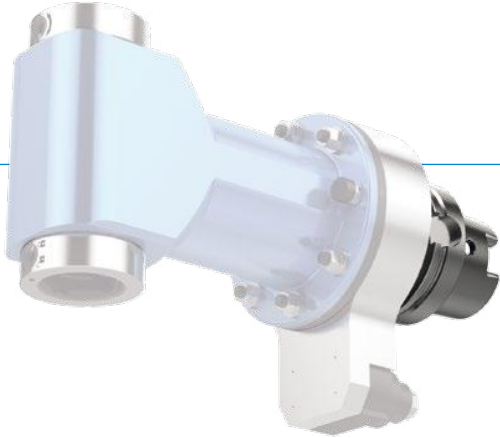
# ANGLE HEAD

## DUO WZX

2

DUO WZX / Design overview / Angle heads

### ▶ DRIVE CONE



Technical data for other machine interfaces on request.

### Type: Steep taper



	▶ Size				
SK DIN 69871	04	05	07	15	20
SK 40	✓	✓	✓	-	-
SK 50	✓	✓	✓	✓	✓



	▶ Size				
MAS BT	04	05	07	15	20
BT 40	✓	✓	✓	-	-
BT 50	✓	✓	✓	✓	✓



	▶ Size				
CAT	04	05	07	15	20
CAT 40	✓	✓	✓	-	-
CAT 50	✓	✓	✓	✓	✓

Type: **Hollow shank taper**



**HSK**  
DIN 69893

	▶ Size				
	04	05	07	15	20
<b>HSK 40</b>	✓	-	-	-	-
<b>HSK 50</b>	✓	✓	-	-	-
<b>HSK 63</b>	✓	✓	✓	-	-
<b>HSK 80</b>	✓	✓	✓	✓	-
<b>HSK 100</b>	✓	✓	✓	✓	✓



**Coromant Capto®**

	▶ Size				
	04	05	07	15	20
<b>C3</b>	✓	-	-	-	-
<b>C4</b>	✓	✓	-	-	-
<b>C5</b>	✓	✓	✓	✓	-
<b>C6</b>	✓	✓	✓	✓	✓
<b>C8</b>	✓	✓	✓	✓	✓



**Kennametal™**

	▶ Size				
	04	05	07	15	20
<b>KM 40</b>	✓	-	-	-	-
<b>KM 50</b>	✓	✓	-	-	-
<b>KM 63</b>	✓	✓	✓	-	-
<b>KM 80</b>	✓	✓	✓	✓	-
<b>KM 100</b>	✓	✓	✓	✓	✓